

COMMISSION ON GOVERNMENT FORECASTING & ACCOUNTABILITY

Illinois Demographics

Issued: October 2022



2020
census

*Commission on Government Forecasting
and Accountability*

COMMISSION CO-CHAIRS

Senator David Koehler
Representative C.D. Davidsmeyer

SENATE

Omar Aquino
Darren Bailey
Donald DeWitte
Elgie Sims
Dave Syverson

HOUSE

Amy Elik
Amy Grant
Sonya Harper
Elizabeth Hernandez
Anna Moeller

EXECUTIVE DIRECTOR

Clayton Klenke

DEPUTY DIRECTOR

Laurie Eby

REVENUE MANAGER

Eric Noggle

AUTHOR OF REPORT

Anthony Bolton

EXECUTIVE SECRETARY

Briana Stafford

TABLE OF CONTENTS

Illinois Demographics: Based on Information from the 2020 Census October 2022

	<u>PAGE</u>
Introduction	1
Section I: A National Perspective	3
Chart 1: U.S. 2020 Population	4
Chart 2: U.S. 2020 Population Percent change 2010-2020	5
Table 1: Population Density by State 1910-2020	6
Table 2: State Population Growth Over the Last Century	10
Chart 3: U.S. Representative and Apportionment by State	11
Table 3: U.S. Representatives and Apportionment by State	11
Table 4: Top Ten 2020 U.S. Metropolitan Areas	12
Table 5: Top Ten Fastest Growing U.S. Metropolitan Areas	12
Table 6: Top Ten Incorporated Places by 2020 Population	12
Chart 4: County Population Growth by Percent Change	13
Chart 5: Racial and Ethnic Diversity of the States in 2020	14
Section II: A Statewide Perspective	15
Table 7: Age Group Estimate for Illinois	16
Table 8: Profile of General Population: IL vs. U.S.	17
Table 9: Population by Race in IL 2010-2020	21
Table 10: Population by Race and Hispanic or Latino Origin	21
Section III: A County-by-County Perspective	23
Table 11: Top Twenty Illinois Counties by Population/Change in Pop./Percent Change	24
Chart 6: Illinois Population Density by County	25
Chart 7: Illinois Population by Percent Change from 2010 to 2020	25
Chart 8: Housing Unit Density – 2020 Census	26
Chart 9: Percentage Change by Housing Units – 2010 Census	26
Table 12: Illinois Population 2020 by County	27
Table 13: Illinois Population 2010 by County	28
Table 14: Illinois Population 2000 by County	29
Table 15: Illinois Population 2010-2020 by County	30
Table 16: Illinois Population by Race by County	31
Table 17: Illinois Hispanic or Latino Demographics by County 2010-2020	32
Table 18: Illinois Household Size by County	33
Table 19: Illinois Household Ownership Status by County	34
Table 20: Illinois Household Type by County	35
Table 21: Illinois County Population by Age	36
Table 22: Income Statistics by Illinois County	37
Table 23: Poverty Status by Illinois County	38
Section IV: Illinois Population by Municipality	39
Table 24: Top Twenty Illinois Municipalities by Population/Change in Pop./Percent Change	39
Table 25: Population of Illinois Municipalities	40

INTRODUCTION

The following document is a collection of data, tables, and graphs highlighting the results of the 2020 Census. This data, which was collected by the Census Bureau during 2020, was delayed in its release partly due to the COVID-19 pandemic, and was first released in terms of apportionment results in April 2021. After this initial release, the Bureau has periodically published additional data with further detail. Operational quality details, including housing unit information and the size of occupied units, was released in May 2021. Redistricting data, which included additional state, county and local counts, were released in August 2021, with other income related data released in July/August 2022. Although additional 2020 census data will continue to be released by the U.S. Census Bureau over the next few years, the Commission has decided to take the data currently available and compile it into an Illinois specific demographic report now, in order to provide as much Census data as possible in a reasonably timely manner.

As always, one of the most important aspects of the U.S. census is that the new population figures determine the number of seats a state occupies in the U.S. House of Representatives. The original 2020 census results, upon which apportionment of seats in the House of Representatives was determined for the 2022 election and onward, was 12,822,739 individuals from Illinois (including overseas populations, such as military, etc.) or 12,812,508 residents. This suggested a decline of 41,641 individuals from 2010 (12,864,380, or 12,830,632 residents). As a result of this count, Illinois' number of apportioned U.S. representatives was reduced from 18 to 17, following similar results in 2010, where the number of apportioned representatives was reduced from 19 to 18.

In May 2022, the US Census Bureau released results from its 2020 Post-Enumeration Survey (PES), which showed that Illinois was one of six states that had their population counts undercounted in the 2020 census. Eight other states were overcounted. The survey showed that Illinois' 2020 population was undercounted by approximately 1.97 percent. Accordingly, rather than a decline of approximately 18,000 residents, the PES shows that Illinois' population grew by almost 262,000 residents. [The survey does not specify the location of these 262,000 residents]. Despite this undercount, the Census Bureau assessed "that the 2020 Census was fit for the purposes of apportionment and redistricting upon their release and after rigorous quality review protocols, and that assessment remains valid".

The use of the PES data and its resulting growth of 262,000 residents enables Illinois to avoid the "stigma" of being seen as a "declining population state". However, the fact remains that Illinois' rate of growth, whether it be a 0.1% decline (initial release) or 2.0% increase (PES), is still well below the national average growth rate of 7.1%. Furthermore, even if the PES figures were used, Illinois' number of apportioned U.S. representatives would have still been reduced to 17.

The Bureau states that the results of the PES "cannot be used to change the final census count but are useful in assessing the current census, determining how best to estimate the population between now and 2030, and helping to improve future censuses". As such, the 2020 data released by the Census Bureau are not altered by the PES findings. Therefore, the county and municipality specific data and tables included in this report are based on the initial census figures and not PES adjusted (unless noted otherwise).

Based on initial 2020 census figures, Illinois county populations primarily increased in the collar county area as well as Cook County. Carroll, McLean, Champaign, Effingham, Monroe, Williamson and Johnson County also experienced an increase in population from 2010. Kendall County continued to grow significantly at 14.9% from the 2010 census to the 2020 census. The Chicago metropolitan area grew by 1.7% or 157,397 individuals, while the Quad Cities, Bloomington, Champaign, and St. Louis areas also had positive growth between 2010 and 2020. The Rockford, Kankakee, Peoria, Danville, Springfield, Decatur, and Carbondale metropolitan areas diminished from 2010, in comparison.

The following informational report provides numerous tables and charts that assist in identifying where the population shift is occurring. This report is broken down into multiple sections. The first section looks at the census data from a national perspective, which shows how Illinois' population changes compare to the nation and to other states across the country. The second section provides a Statewide perspective of Illinois' 2020 demographic data based on available information, including a limited profile of Illinois' general population. Also included in this section are Statewide income and benefits data as provided by the U.S. Census Bureau and the 2020 American Community Survey.

The third section looks at the Illinois data from a county-by-county perspective. This section helps identify the areas of the State that are seeing the largest change in the demographic data over the last decade. The final section displays the 2020 Census population by municipality, allowing the reader to see how the population of their hometown has changed over the last ten years.

At the opening of each section are dot-points highlighting notable observations from the provided tables and charts. All of the core data come from www.census.gov. Tables and charts were compiled by the Commission, obtained directly from the Census Bureau's website, or modified from other reputable sources.

I. A National Perspective

Highlights:

- Over the past decade, the United States' resident population grew 7.4%, reaching 331.4 million people in 2020. The largest increases came from the South (10.2%) and the West (9.2%) regions. The Midwest (3.1%) and the Northeast regions (4.1%) continued to see more modest increases.
- It must be noted that state population numbers should be taken within the context of the aforementioned PES adjustments, which affects state-to-state comparisons, especially in the case of larger states. The states most affected by the undercounting are: Arkansas (5.04%), Florida (3.48%), Illinois (1.97%), Mississippi (4.11%), Tennessee (4.78%), and Texas (1.92%). The states most affected by overcounting are: Delaware (5.45%), Hawaii (6.79%), Massachusetts (2.24%), Minnesota (3.84%), New York (3.44%), Ohio (1.49%), Rhode Island (5.05%), and Utah (2.59%).
- Based on the initial census data, Illinois' population fell 0.1% over the last decade to a 2020 total of 12.8 million. This dropped Illinois to the 6th largest state in terms of population behind Pennsylvania (13.0 million). Based on these figures, it was the 48th ranked state in terms of population rate of growth between 2010 and 2020, and 49th in terms of population change. However, if the PES figures are used and adjusted for its reported undercounting in the 2020 census, Illinois' population grew 2.0% over the last decade to 13.1 million. These adjusted figures would keep Illinois as the 5th largest state in terms of population. However, in terms of population rate of growth, Illinois would only improve slightly to 47th.
- In terms of population from the 2020 census, the largest state continues to be California at 39.5 million people. Rounding out the top six were Texas (29.1 million), Florida (21.5 million), New York (20.2 million), Pennsylvania (13.0 million), and Illinois (12.8 million). The lowest populated state continues to be Wyoming with 0.6 million people.
- A shifting population base has caused a reapportionment of the U.S. House of Representatives. Due to Illinois' lack of growth in comparison to other states, Illinois' number of apportioned representatives has fallen from 18 to 17. Even if the updated figures from the PES were used in calculating the apportionment, Illinois would have still lost one apportioned representative.
- Other states losing representatives are Michigan (-1), Ohio (-1), California (-1), West Virginia (-1), New York (-1), and Pennsylvania (-1). States gaining representatives include North Carolina (+1), Florida (+1), Colorado (+1), Oregon (+1), Montana (+1), and Texas (+2).
- In terms of population density, in 2020, Illinois had a density value of 230.8 people per square mile. This ranked Illinois 14th in the nation, the same as its 2010 ranking of 14th with a slightly higher density value of 231.1 people per square mile.

- The most densely populated state in 2020 (aside from the District of Columbia) was New Jersey at a value of 1,263 people per square mile. Rounding out the top five were Rhode Island (1,061), Massachusetts (901), Connecticut (745), and Maryland (636). The least dense state was Alaska at 1.3 people per square mile.
- The top five U.S. incorporated places in 2020, in terms of population, were New York City (8.8 million), Los Angeles (3.9 million), Chicago (2.7 million), Houston (2.3 million), and Phoenix (1.6 million).

CHART 1

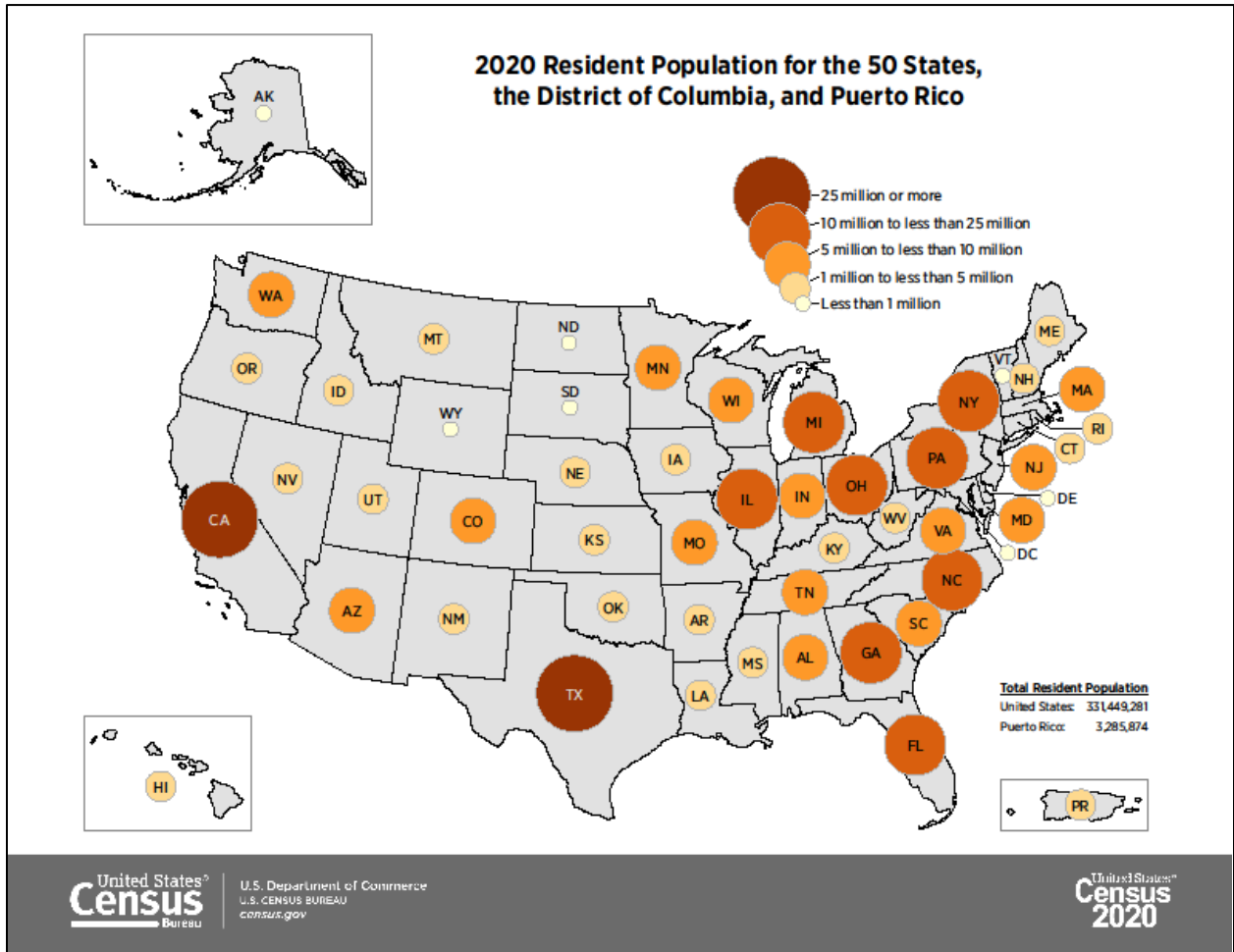
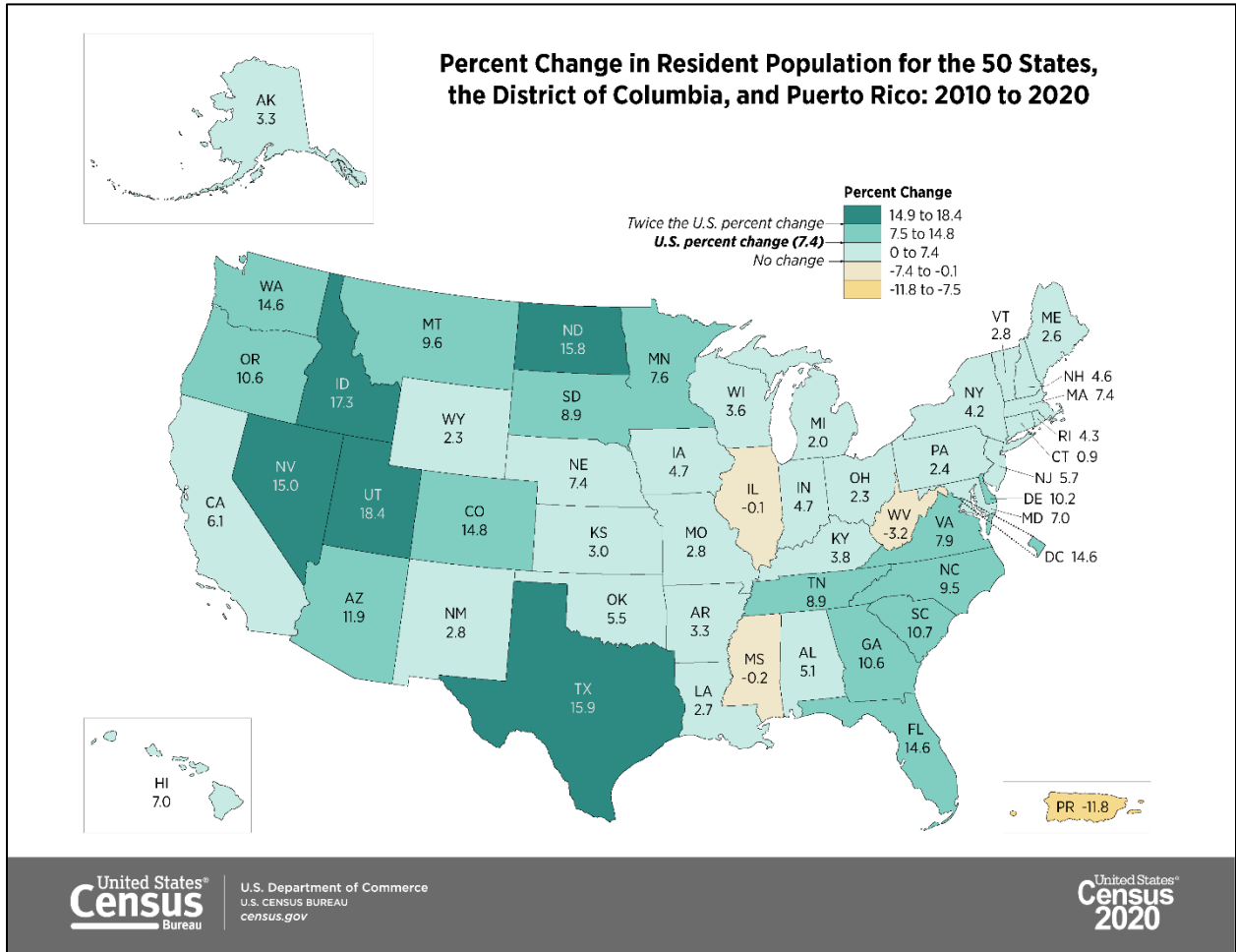


CHART 2



United States[®]
Census
 Bureau

U.S. Department of Commerce
 U.S. CENSUS BUREAU
 census.gov

United States[®]
Census
 2020

TABLE 1

Population Density of the 50 States, the District of Columbia, and Puerto Rico: 1910 to 2020									
Area	2020 Census			2010 Census			2000 Census		
	Resident Population	Population Density	Density Rank	Resident Population	Population Density	Density Rank	Resident Population	Population Density	Density Rank
Alabama	5,024,279	99.2	29	4,779,736	94.4	29	4,447,100	87.8	28
Alaska	733,391	1.3	52	710,231	1.2	52	626,932	1.1	52
Arizona	7,151,502	62.9	35	6,392,017	56.3	35	5,130,632	45.2	38
Arkansas	3,011,524	57.9	36	2,915,918	56.0	36	2,673,400	51.4	36
California	39,538,223	253.7	13	37,253,956	239.1	13	33,871,648	217.4	14
Colorado	5,773,714	55.7	39	5,029,196	48.5	39	4,301,261	41.5	39
Connecticut	3,605,944	744.7	6	3,574,097	738.1	6	3,405,565	703.3	6
Delaware	989,948	508.0	8	897,934	460.8	8	783,600	402.1	9
District of Columbia	689,545	11,280.0	1	601,723	9,856.5	1	572,059	9,370.6	1
Florida	21,538,187	401.4	10	18,801,310	350.6	10	15,982,378	298.0	10
Georgia	10,711,908	185.6	19	9,687,653	168.4	20	8,186,453	142.3	20
Hawaii	1,455,271	226.6	15	1,360,301	211.8	15	1,211,537	188.6	15
Idaho	1,839,106	22.3	46	1,567,582	19.0	46	1,293,953	15.7	46
Illinois	12,812,508	230.8	14	12,830,632	231.1	14	12,419,293	223.7	13
Indiana	6,785,528	189.4	18	6,483,802	181.0	18	6,080,485	169.7	18
Iowa	3,190,369	57.1	38	3,046,355	54.5	38	2,926,324	52.4	35
Kansas	2,937,880	35.9	43	2,853,118	34.9	42	2,688,418	32.9	42
Kentucky	4,505,836	114.1	25	4,339,367	109.9	24	4,041,769	102.4	25
Louisiana	4,657,757	107.8	28	4,533,372	104.9	26	4,468,976	103.4	24
Maine	1,362,359	44.2	40	1,328,361	43.1	40	1,274,923	41.3	40
Maryland	6,177,224	636.1	7	5,773,552	594.8	7	5,296,486	545.6	7
Massachusetts	7,029,917	901.2	5	6,547,629	839.4	5	6,349,097	814.0	5
Michigan	10,077,331	178.0	20	9,883,640	174.8	19	9,938,444	175.8	17
Minnesota	5,706,494	71.7	32	5,303,925	66.6	33	4,919,479	61.8	33
Mississippi	2,961,279	63.1	34	2,967,297	63.2	34	2,844,658	60.6	34
Missouri	6,154,913	89.5	30	5,988,927	87.1	30	5,595,211	81.4	29
Montana	1,084,225	7.4	50	989,415	6.8	50	902,195	6.2	50
Nebraska	1,961,504	25.5	45	1,826,341	23.8	45	1,711,263	22.3	44
Nevada	3,104,614	28.3	44	2,700,551	24.6	44	1,998,257	18.2	45
New Hampshire	1,377,529	153.8	23	1,316,470	147.0	23	1,235,786	138.0	22
New Jersey	9,288,994	1,263.0	2	8,791,894	1,195.5	2	8,414,350	1,144.2	2
New Mexico	2,117,522	17.5	47	2,059,179	17.0	47	1,819,046	15.0	47
New York	20,201,249	428.7	9	19,378,102	411.2	9	18,976,457	402.7	8
North Carolina	10,439,388	214.7	17	9,535,483	196.1	17	8,049,313	165.6	19
North Dakota	779,094	11.3	49	672,591	9.7	49	642,200	9.3	49
Ohio	11,799,448	288.8	12	11,536,504	282.3	12	11,353,140	277.8	11
Oklahoma	3,959,353	57.7	37	3,751,351	54.7	37	3,450,654	50.3	37
Oregon	4,237,256	44.1	41	3,831,074	39.9	41	3,421,399	35.6	41
Pennsylvania	13,002,700	290.6	11	12,702,379	283.9	11	12,281,054	274.5	12
Rhode Island	1,097,379	1,061.4	3	1,052,567	1,018.1	4	1,048,319	1,014.0	4
South Carolina	5,118,425	170.2	21	4,625,364	153.9	22	4,012,012	133.5	23
South Dakota	886,667	11.7	48	814,180	10.7	48	754,844	10.0	48
Tennessee	6,910,840	167.6	22	6,346,105	153.9	21	5,689,283	138.0	21
Texas	29,145,505	111.6	26	25,145,561	96.3	28	20,851,820	79.8	30
Utah	3,271,616	39.7	42	2,763,885	33.6	43	2,233,169	27.2	43
Vermont	643,077	69.8	33	625,741	67.9	32	608,827	66.1	32
Virginia	8,631,393	218.6	16	8,001,024	202.6	16	7,078,515	179.2	16
Washington	7,705,281	115.9	24	6,724,540	101.2	27	5,894,121	88.7	27
West Virginia	1,793,716	74.6	31	1,852,994	77.1	31	1,808,344	75.2	31
Wisconsin	5,893,718	108.8	27	5,686,986	105.0	25	5,363,675	99.0	26
Wyoming	576,851	5.9	51	563,626	5.8	51	493,782	5.1	51
United States ¹	331,449,281	93.8	X	308,745,538	87.4	X	281,421,906	79.7	X
Puerto Rico	3,285,874	959.6	4	3,725,789	1,088.2	3	3,808,610	1,112.4	3

TABLE 1 (continued)

Population Density of the 50 States, the District of Columbia, and Puerto Rico: 1910 to 2020 (continued)									
Area	1990 Census			1980 Census			1970 Census		
	Resident Population	Population Density	Density Rank	Resident Population	Population Density	Density Rank	Resident Population	Population Density	Density Rank
Alabama	4,040,587	79.8	27	3,893,888	76.9	28	3,444,165	68.0	28
Alaska	550,043	1.0	52	401,851	0.7	52	300,382	0.5	52
Arizona	3,665,228	32.3	39	2,718,215	23.9	42	1,770,900	15.6	43
Arkansas	2,350,725	45.2	37	2,286,435	43.9	37	1,923,295	37.0	37
California	29,760,021	191.0	14	23,667,902	151.9	16	19,953,134	128.1	15
Colorado	3,294,394	31.8	40	2,889,964	27.9	40	2,207,259	21.3	41
Connecticut	3,287,116	678.8	6	3,107,576	641.7	6	3,031,709	626.1	6
Delaware	666,168	341.9	9	594,338	305.0	9	548,104	281.3	9
District of Columbia	606,900	9,941.3	1	638,333	10,456.2	1	756,510	12,392.0	1
Florida	12,937,926	241.3	12	9,746,324	181.8	13	6,789,443	126.6	16
Georgia	6,478,216	112.6	23	5,463,105	95.0	24	4,589,575	79.8	26
Hawaii	1,108,229	172.6	15	964,691	150.2	17	768,561	119.7	17
Idaho	1,006,749	12.2	46	943,935	11.4	45	712,567	8.6	47
Illinois	11,430,602	205.9	13	11,426,518	205.8	12	11,113,976	200.2	12
Indiana	5,544,159	154.8	18	5,490,224	153.2	15	5,193,669	145.0	14
Iowa	2,776,755	49.7	35	2,913,808	52.2	34	2,824,376	50.6	31
Kansas	2,477,574	30.3	41	2,363,679	28.9	39	2,246,578	27.5	39
Kentucky	3,685,296	93.3	25	3,660,777	92.7	25	3,218,706	81.5	25
Louisiana	4,219,973	97.7	24	4,205,900	97.3	23	3,641,306	84.3	22
Maine	1,227,928	39.8	38	1,124,660	36.5	38	992,048	32.2	38
Maryland	4,781,468	492.6	7	4,216,975	434.4	7	3,922,399	404.1	7
Massachusetts	6,016,425	771.3	5	5,737,037	735.5	5	5,689,170	729.4	5
Michigan	9,295,297	164.4	16	9,262,078	163.8	14	8,875,083	157.0	13
Minnesota	4,375,099	54.9	33	4,075,970	51.2	35	3,804,971	47.8	33
Mississippi	2,573,216	54.8	34	2,520,638	53.7	33	2,216,912	47.2	34
Missouri	5,117,073	74.4	29	4,916,686	71.5	29	4,676,501	68.0	28
Montana	799,065	5.5	50	786,690	5.4	50	694,409	4.8	49
Nebraska	1,578,385	20.5	44	1,569,825	20.4	43	1,483,493	19.3	42
Nevada	1,201,833	10.9	47	800,493	7.3	49	488,738	4.5	50
New Hampshire	1,109,252	123.9	20	920,610	102.8	22	737,681	82.4	23
New Jersey	7,730,188	1,051.1	2	7,364,823	1,001.4	2	7,168,164	974.7	2
New Mexico	1,515,069	12.5	45	1,302,894	10.7	46	1,016,000	8.4	48
New York	17,990,455	381.7	8	17,558,072	372.6	8	18,236,967	387.0	8
North Carolina	6,628,637	136.3	19	5,881,766	121.0	19	5,082,059	104.5	19
North Dakota	638,800	9.3	48	652,717	9.5	47	617,761	9.0	45
Ohio	10,847,115	265.5	11	10,797,630	264.3	11	10,652,017	260.7	11
Oklahoma	3,145,585	45.9	36	3,025,290	44.1	36	2,559,229	37.3	36
Oregon	2,842,321	29.6	42	2,633,105	27.4	41	2,091,385	21.8	40
Pennsylvania	11,881,643	265.6	10	11,863,895	265.2	10	11,793,909	263.6	10
Rhode Island	1,003,464	970.6	4	947,154	916.2	4	946,725	915.8	3
South Carolina	3,486,703	116.0	22	3,121,820	103.9	21	2,590,516	86.2	21
South Dakota	696,004	9.2	49	690,768	9.1	48	665,507	8.8	46
Tennessee	4,877,185	118.3	21	4,591,120	111.3	20	3,923,687	95.2	20
Texas	16,986,510	65.0	31	14,229,191	54.5	32	11,196,730	42.9	35
Utah	1,722,850	21.0	43	1,461,037	17.8	44	1,059,273	12.9	44
Vermont	562,758	61.1	32	511,456	55.5	31	444,330	48.2	32
Virginia	6,187,358	156.7	17	5,346,818	135.4	18	4,648,494	117.7	18
Washington	4,866,692	73.2	30	4,132,156	62.2	30	3,409,169	51.3	30
West Virginia	1,793,477	74.6	28	1,949,644	81.1	27	1,744,237	72.6	27
Wisconsin	4,891,769	90.3	26	4,705,767	86.9	26	4,417,731	81.6	24
Wyoming	453,588	4.7	51	469,557	4.8	51	332,416	3.4	51
United States	248,709,873	70.4	X	226,545,805	64.1	X	203,211,926	57.5	X
Puerto Rico	3,522,037	1,028.7	3	3,196,520	933.6	3	2,712,033	792.1	4

TABLE 1 (continued)

Population Density of the 50 States, the District of Columbia, and Puerto Rico: 1910 to 2020 (continued)									
Area	1960 Census			1950 Census			1940 Census		
	Resident Population	Population Density	Density Rank	Resident Population	Population Density	Density Rank	Resident Population	Population Density	Density Rank
Alabama	3,266,740	64.5	28	3,061,743	60.5	24	2,832,961	55.9	23
Alaska	226,167	0.4	52	128,643	0.2	52	72,524	0.1	52
Arizona	1,302,161	11.5	43	749,587	6.6	47	499,261	4.4	47
Arkansas	1,786,272	34.3	36	1,909,511	36.7	34	1,949,387	37.5	32
California	15,717,204	100.9	15	10,586,223	68.0	22	6,907,387	44.3	30
Colorado	1,753,947	16.9	42	1,325,089	12.8	42	1,123,296	10.8	42
Connecticut	2,535,234	523.6	6	2,007,280	414.5	6	1,709,242	353.0	6
Delaware	446,292	229.0	11	318,085	163.2	11	266,505	136.8	12
District of Columbia	763,956	12,513.9	1	802,178	13,140.0	1	663,091	10,861.7	1
Florida	4,951,560	92.3	19	2,771,305	51.7	29	1,897,414	35.4	33
Georgia	3,943,116	68.6	26	3,444,578	59.9	27	3,123,723	54.3	27
Hawaii	632,772	98.5	17	499,794	77.8	19	423,330	65.9	20
Idaho	667,191	8.1	47	588,637	7.1	46	524,873	6.4	46
Illinois	10,081,158	181.6	12	8,712,176	156.9	12	7,897,241	142.2	11
Indiana	4,662,498	130.1	14	3,934,224	109.8	14	3,427,796	95.7	13
Iowa	2,757,537	49.4	30	2,621,073	46.9	30	2,538,268	45.4	29
Kansas	2,178,611	26.6	39	1,905,299	23.3	39	1,801,028	22.0	39
Kentucky	3,038,156	76.9	23	2,944,806	74.6	20	2,845,627	72.1	17
Louisiana	3,257,022	75.4	24	2,683,516	62.1	25	2,363,880	54.7	26
Maine	969,265	31.4	38	913,774	29.6	37	847,226	27.5	36
Maryland	3,100,689	319.4	8	2,343,001	241.4	8	1,821,244	187.6	9
Massachusetts	5,148,578	660.1	5	4,690,514	601.3	5	4,316,721	553.4	4
Michigan	7,823,194	138.4	13	6,371,766	112.7	13	5,256,106	93.0	14
Minnesota	3,413,864	42.9	32	2,982,483	37.5	33	2,792,300	35.1	34
Mississippi	2,178,141	46.4	31	2,178,914	46.4	31	2,183,796	46.5	28
Missouri	4,319,813	62.8	29	3,954,653	57.5	28	3,784,664	55.1	24
Montana	674,767	4.6	49	591,024	4.1	49	559,456	3.8	49
Nebraska	1,411,330	18.4	40	1,325,510	17.3	40	1,315,834	17.1	40
Nevada	285,278	2.6	51	160,083	1.5	51	110,247	1.0	51
New Hampshire	606,921	67.8	27	533,242	59.6	26	491,524	54.9	25
New Jersey	6,066,782	824.9	3	4,835,329	657.5	4	4,160,165	565.7	3
New Mexico	951,023	7.8	48	681,187	5.6	48	531,818	4.4	47
New York	16,782,304	356.1	7	14,830,192	314.7	7	13,479,142	286.0	7
North Carolina	4,556,155	93.7	18	4,061,929	83.5	17	3,571,623	73.5	16
North Dakota	632,446	9.2	45	619,636	9.0	43	641,935	9.3	43
Ohio	9,706,397	237.5	10	7,946,627	194.5	10	6,907,612	169.1	10
Oklahoma	2,328,284	33.9	37	2,233,351	32.6	36	2,336,434	34.1	35
Oregon	1,768,687	18.4	40	1,521,341	15.8	41	1,089,684	11.4	41
Pennsylvania	11,319,366	253.0	9	10,498,012	234.6	9	9,900,180	221.3	8
Rhode Island	859,488	831.4	2	791,896	766.0	3	713,346	690.0	2
South Carolina	2,382,594	79.3	21	2,117,027	70.4	21	1,899,804	63.2	21
South Dakota	680,514	9.0	46	652,740	8.6	44	642,961	8.5	44
Tennessee	3,567,089	86.5	20	3,291,718	79.8	18	2,915,841	70.7	18
Texas	9,579,677	36.7	35	7,711,194	29.5	38	6,414,824	24.6	38
Utah	890,627	10.8	44	688,862	8.4	45	550,310	6.7	45
Vermont	389,881	42.3	34	377,747	41.0	32	359,231	39.0	31
Virginia	3,966,949	100.5	16	3,318,680	84.0	16	2,677,773	67.8	19
Washington	2,853,214	42.9	32	2,378,963	35.8	35	1,736,191	26.1	37
West Virginia	1,860,421	77.4	22	2,005,552	83.4	15	1,901,974	79.1	15
Wisconsin	3,951,777	73.0	25	3,434,575	63.4	23	3,137,587	57.9	22
Wyoming	330,066	3.4	50	290,529	3.0	50	250,742	2.6	50
United States	179,323,175	50.6	X	151,325,798	42.6	X	132,165,129	37.2	X
Puerto Rico	2,349,544	686.2	4	2,210,703	645.7	2	1,869,255	546.0	5

TABLE 1 (continued)

Population Density of the 50 States, the District of Columbia, and Puerto Rico: 1910 to 2020 (continued)									
Area	1930 Census			1920 Census			1910 Census		
	Resident Population	Population Density	Density Rank	Resident Population	Population Density	Density Rank	Resident Population	Population Density	Density Rank
Alabama	2,646,248	52.3	24	2,348,174	46.4	25	2,138,093	42.2	25
Alaska	59,278	0.1	52	55,036	0.1	52	64,356	0.1	52
Arizona	435,573	3.8	47	334,162	2.9	49	204,354	1.8	49
Arkansas	1,854,482	35.6	32	1,752,204	33.7	31	1,574,449	30.3	30
California	5,677,251	36.4	31	3,426,861	22.0	35	2,377,549	15.3	38
Colorado	1,035,791	10.0	41	939,629	9.1	42	799,024	7.7	42
Connecticut	1,606,903	331.8	6	1,380,631	285.1	6	1,114,756	230.2	6
Delaware	238,380	122.3	12	223,003	114.4	12	202,322	103.8	11
District of Columbia	486,869	7,975.1	1	437,571	7,167.6	1	331,069	5,423.1	1
Florida	1,468,211	27.4	35	968,470	18.1	38	752,619	14.0	40
Georgia	2,908,506	50.6	26	2,895,832	50.4	21	2,609,121	45.4	23
Hawaii	368,336	57.3	21	255,912	39.8	28	191,909	29.9	31
Idaho	445,032	5.4	46	431,866	5.2	46	325,594	3.9	46
Illinois	7,630,654	137.4	11	6,485,280	116.8	11	5,638,591	101.6	12
Indiana	3,238,503	90.4	13	2,930,390	81.8	13	2,700,876	75.4	13
Iowa	2,470,939	44.2	28	2,404,021	43.0	26	2,224,771	39.8	26
Kansas	1,880,999	23.0	38	1,769,257	21.6	36	1,690,949	20.7	35
Kentucky	2,614,589	66.2	16	2,416,630	61.2	15	2,289,905	58.0	14
Louisiana	2,101,593	48.6	27	1,798,509	41.6	27	1,656,388	38.3	29
Maine	797,423	25.9	36	768,014	24.9	34	742,371	24.1	33
Maryland	1,631,526	168.1	9	1,449,661	149.3	9	1,295,346	133.4	9
Massachusetts	4,249,614	544.8	4	3,852,356	493.9	3	3,366,416	431.6	3
Michigan	4,842,325	85.6	14	3,668,412	64.9	14	2,810,173	49.7	19
Minnesota	2,563,953	32.2	34	2,387,125	30.0	32	2,075,708	26.1	32
Mississippi	2,009,821	42.8	29	1,790,618	38.2	29	1,797,114	38.3	28
Missouri	3,629,367	52.8	23	3,404,055	49.5	22	3,293,335	47.9	21
Montana	537,606	3.7	48	548,889	3.8	47	376,053	2.6	48
Nebraska	1,377,963	17.9	40	1,296,372	16.9	40	1,192,214	15.5	37
Nevada	91,058	0.8	51	77,407	0.7	51	81,875	0.7	51
New Hampshire	465,293	52.0	25	443,083	49.5	22	430,572	48.1	20
New Jersey	4,041,334	549.5	3	3,155,900	429.1	4	2,537,167	345.0	4
New Mexico	423,317	3.5	49	360,350	3.0	48	327,301	2.7	47
New York	12,588,066	267.1	7	10,385,227	220.4	7	9,113,614	193.4	7
North Carolina	3,170,276	65.2	17	2,559,123	52.6	20	2,206,287	45.4	22
North Dakota	680,845	9.9	42	646,872	9.4	41	577,056	8.4	41
Ohio	6,646,697	162.7	10	5,759,394	141.0	10	4,767,121	116.7	10
Oklahoma	2,396,040	34.9	33	2,028,283	29.6	33	1,657,155	24.2	33
Oregon	953,786	9.9	42	783,389	8.2	44	672,765	7.0	44
Pennsylvania	9,631,350	215.3	8	8,720,017	194.9	8	7,665,111	171.3	8
Rhode Island	687,497	665.0	2	604,397	584.6	2	542,610	524.9	2
South Carolina	1,738,765	57.8	20	1,683,724	56.0	19	1,515,400	50.4	18
South Dakota	692,849	9.1	44	636,547	8.4	43	583,888	7.7	42
Tennessee	2,616,556	63.5	18	2,337,885	56.7	18	2,184,789	53.0	15
Texas	5,824,715	22.3	39	4,663,228	17.9	39	3,896,542	14.9	39
Utah	507,847	6.2	45	449,396	5.5	45	373,351	4.5	45
Vermont	359,611	39.0	30	352,428	38.2	30	355,956	38.6	27
Virginia	2,421,851	61.3	19	2,309,187	58.5	17	2,061,612	52.2	16
Washington	1,563,396	23.5	37	1,356,621	20.4	37	1,141,990	17.2	36
West Virginia	1,729,205	71.9	15	1,463,701	60.9	15	1,221,119	50.8	17
Wisconsin	2,939,006	54.3	22	2,632,067	48.6	24	2,333,860	43.1	24
Wyoming	225,565	2.3	50	194,402	2.0	50	145,965	1.5	50
United States	123,202,660	34.7	X	106,021,568	29.9	X	92,228,531	26.0	X
Puerto Rico	1,543,913	450.9	5	1,299,809	379.6	5	1,118,012	326.5	5

TABLE 2

State Population Growth Over The Last Century										
Area	2020 Census	2010 Census (10 years ago)			1970 Census (50 years ago)			1920 Census (100 years ago)		
	Resident Population	Resident Population	Growth to 2020	Rank of Growth to 2020	Resident Population	Growth to 2020	Rank of Growth to 2020	Resident Population	Growth to 2020	Rank of Growth to 2020
Alabama	5,024,279	4,779,736	244,543	24	3,444,165	1,580,114	21	2,348,174	2,676,105	28
Alaska	733,391	710,231	23,160	45	300,382	433,009	41	55,036	678,355	41
Arizona	7,151,502	6,392,017	759,485	8	1,770,900	5,380,602	5	334,162	6,817,340	7
Arkansas	3,011,524	2,915,918	95,606	34	1,923,295	1,088,229	32	1,752,204	1,259,320	34
California	39,538,223	37,253,956	2,284,267	3	19,953,134	19,585,089	1	3,426,861	36,111,362	1
Colorado	5,773,714	5,029,196	744,518	9	2,207,259	3,566,455	9	939,629	4,834,085	14
Connecticut	3,605,944	3,574,097	31,847	44	3,031,709	574,235	38	1,380,631	2,225,313	29
Delaware	989,948	897,934	92,014	37	548,104	441,844	40	223,003	766,945	40
Florida	21,538,187	18,801,310	2,736,877	2	6,789,443	14,748,744	3	968,470	20,569,717	3
Georgia	10,711,908	9,687,653	1,024,255	4	4,589,575	6,122,333	4	2,895,832	7,816,076	6
Hawaii	1,455,271	1,360,301	94,970	35	768,561	686,710	36	255,912	1,199,359	35
Idaho	1,839,106	1,567,582	271,524	22	712,567	1,126,539	30	431,866	1,407,240	33
Illinois	12,812,508	12,830,632	-18,124	49	11,113,976	1,698,532	19	6,485,280	6,327,228	10
Indiana	6,785,528	6,483,802	301,726	20	5,193,669	1,591,859	20	2,930,390	3,855,138	18
Iowa	3,190,369	3,046,355	144,014	30	2,824,376	365,993	44	2,404,021	786,348	39
Kansas	2,937,880	2,853,118	84,762	38	2,246,578	691,302	35	1,769,257	1,168,623	37
Kentucky	4,505,836	4,339,367	166,469	28	3,218,706	1,287,130	26	2,416,630	2,089,206	30
Louisiana	4,657,757	4,533,372	124,385	32	3,641,306	1,016,451	33	1,798,509	2,859,248	25
Maine	1,362,359	1,328,361	33,998	43	992,048	370,311	43	768,014	594,345	43
Maryland	6,177,224	5,773,552	403,672	18	3,922,399	2,254,825	13	1,449,661	4,727,563	15
Massachusetts	7,029,917	6,547,629	482,288	15	5,689,170	1,340,747	25	3,852,356	3,177,561	23
Michigan	10,077,331	9,883,640	193,691	27	8,875,083	1,202,248	28	3,668,412	6,408,919	8
Minnesota	5,706,494	5,303,925	402,569	19	3,804,971	1,901,523	18	2,387,125	3,319,369	21
Mississippi	2,961,279	2,967,297	-6,018	48	2,216,912	744,367	34	1,790,618	1,170,661	36
Missouri	6,154,913	5,988,927	165,986	29	4,676,501	1,478,412	22	3,404,055	2,750,858	27
Montana	1,084,225	989,415	94,810	36	694,409	389,816	42	548,889	535,336	44
Nebraska	1,961,504	1,826,341	135,163	31	1,483,493	478,011	39	1,296,372	665,132	42
Nevada	3,104,614	2,700,551	404,063	17	488,738	2,615,876	11	77,407	3,027,207	24
New Hampshire	1,377,529	1,316,470	61,059	40	737,681	639,848	37	443,083	934,446	38
New Jersey	9,288,994	8,791,894	497,100	13	7,168,164	2,120,830	16	3,155,900	6,133,094	12
New Mexico	2,117,522	2,059,179	58,343	41	1,016,000	1,101,522	31	360,350	1,757,172	32
New York	20,201,249	19,378,102	823,147	7	18,236,967	1,964,282	17	10,385,227	9,816,022	4
North Carolina	10,439,388	9,535,483	903,905	6	5,082,059	5,357,329	6	2,559,123	7,880,265	5
North Dakota	779,094	672,591	106,503	33	617,761	161,333	48	646,872	132,222	50
Ohio	11,799,448	11,536,504	262,944	23	10,652,017	1,147,431	29	5,759,394	6,040,054	13
Oklahoma	3,959,353	3,751,351	208,002	25	2,559,229	1,400,124	24	2,028,283	1,931,070	31
Oregon	4,237,256	3,831,074	406,182	16	2,091,385	2,145,871	15	783,389	3,453,867	19
Pennsylvania	13,002,700	12,702,379	300,321	21	11,793,909	1,208,791	27	8,720,017	4,282,683	17
Rhode Island	1,097,379	1,052,567	44,812	42	946,725	150,654	49	604,397	492,982	45
South Carolina	5,118,425	4,625,364	493,061	14	2,590,516	2,527,909	12	1,683,724	3,434,701	20
South Dakota	886,667	814,180	72,487	39	665,507	221,160	46	636,547	250,120	49
Tennessee	6,910,840	6,346,105	564,735	11	3,923,687	2,987,153	10	2,337,885	4,572,955	16
Texas	29,145,505	25,145,561	3,999,944	1	11,196,730	17,948,775	2	4,663,228	24,482,277	2
Utah	3,271,616	2,763,885	507,731	12	1,059,273	2,212,343	14	449,396	2,822,220	26
Vermont	643,077	625,741	17,336	46	444,330	198,747	47	352,428	290,649	48
Virginia	8,631,393	8,001,024	630,369	10	4,648,494	3,982,899	8	2,309,187	6,322,206	11
Washington	7,705,281	6,724,540	980,741	5	3,409,169	4,296,112	7	1,356,621	6,348,660	9
West Virginia	1,793,716	1,852,994	-59,278	50	1,744,237	49,479	50	1,463,701	330,015	47
Wisconsin	5,893,718	5,686,986	206,732	26	4,417,731	1,475,987	23	2,632,067	3,261,651	22
Wyoming	576,851	563,626	13,225	47	332,416	244,435	45	194,402	382,449	46
United States	331,449,281	308,745,538	22,703,743	N/A	203,211,926	128,237,355	N/A	106,021,568	225,427,713	N/A

CHART 3

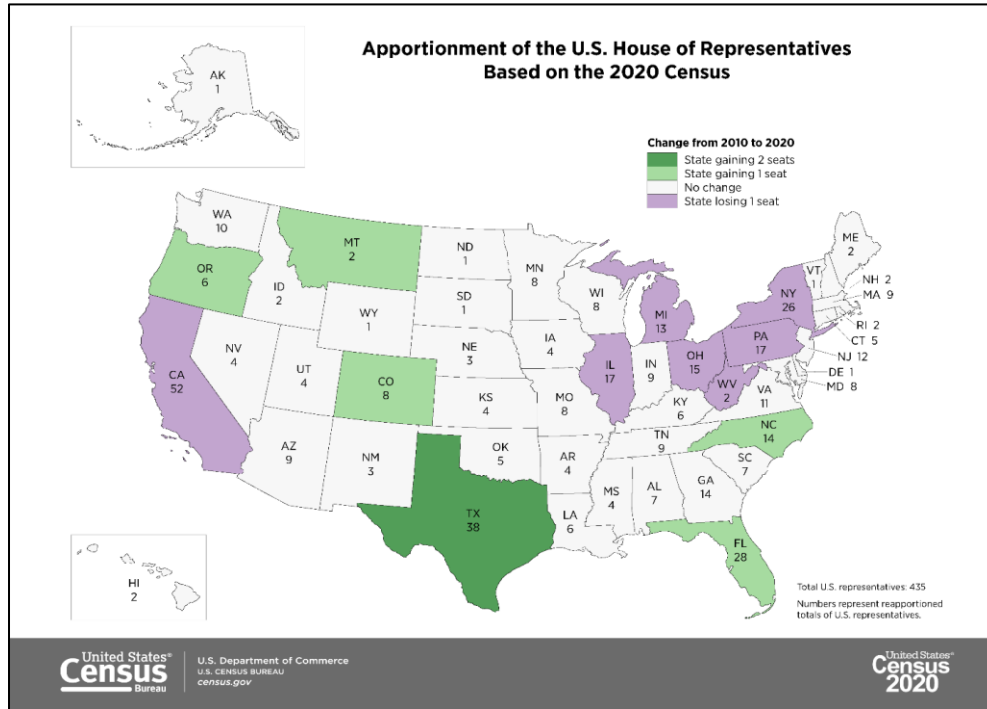


TABLE 3

Apportionment Population and Number of Representatives by State 2020 Census							
STATE	APPORTIONMENT POPULATION (APRIL 1, 2020)	NUMBER OF APPORTIONED REPRESENTATIVES BASED ON 2020 CENSUS ²	CHANGE FROM 2010 CENSUS APPORTIONMENT	STATE	APPORTIONMENT POPULATION (APRIL 1, 2020)	NUMBER OF APPORTIONED REPRESENTATIVES BASED ON 2020 CENSUS ²	CHANGE FROM 2010 CENSUS APPORTIONMENT
Alabama	5,030,053	7	0	Montana	1,085,407	2	1
Alaska	736,081	1	0	Nebraska	1,963,333	3	0
Arizona	7,158,923	9	0	Nevada	3,108,462	4	0
Arkansas	3,013,756	4	0	New Hampshire	1,379,089	2	0
California	39,576,757	52	-1	New Jersey	9,294,493	12	0
Colorado	5,782,171	8	1	New Mexico	2,120,220	3	0
Connecticut	3,608,298	5	0	New York	20,215,751	26	-1
Delaware	990,837	1	0	North Carolina	10,453,948	14	1
Florida	21,570,527	28	1	North Dakota	779,702	1	0
Georgia	10,725,274	14	0	Ohio	11,808,848	15	-1
Hawaii	1,460,137	2	0	Oklahoma	3,963,516	5	0
Idaho	1,841,377	2	0	Oregon	4,241,500	6	1
Illinois	12,822,739	17	-1	Pennsylvania	13,011,844	17	-1
Indiana	6,790,280	9	0	Rhode Island	1,098,163	2	0
Iowa	3,192,406	4	0	South Carolina	5,124,712	7	0
Kansas	2,940,865	4	0	South Dakota	887,770	1	0
Kentucky	4,509,342	6	0	Tennessee	6,916,897	9	0
Louisiana	4,661,468	6	0	Texas	29,183,290	38	2
Maine	1,363,582	2	0	Utah	3,275,252	4	0
Maryland	6,185,278	8	0	Vermont	643,503	1	0
Massachusetts	7,033,469	9	0	Virginia	8,654,542	11	0
Michigan	10,084,442	13	-1	Washington	7,715,946	10	0
Minnesota	5,709,752	8	0	West Virginia	1,795,045	2	-1
Mississippi	2,963,914	4	0	Wisconsin	5,897,473	8	0
Missouri	6,160,281	8	0	Wyoming	577,719	1	0
TOTAL APPORTIONMENT POPULATION¹					331,108,434	435	

¹ Includes the resident population for the 50 states, as ascertained by the Twenty-Fourth Decennial Census under Title 13, United States Code, and counts of U.S. military and federal civilian employees living overseas (and their dependents living with them overseas) allocated to their home state, as reported by the employing federal agencies. The apportionment population excludes the population of the District of Columbia. The counts of overseas personnel (and dependents) are used for apportionment purposes only.

² The U.S. Census Bureau prepared these calculations using the existing size of the U.S. House of Representatives (435 members) and the Method of Equal Proportions, as provided for in Title 2, United States Code, Sections 2a and 2b.

Source: <https://www.census.gov/data/tables/2020/dec/2020-apportionment-data.html>

TABLE 4

Top Ten U.S. Metropolitan Areas by 2020 Population				
Metropolitan Area	2020 Population	2010 Population	Population Change	Percent Change
New York-Newark-Jersey City, NY-NJ-PA	20,140,470	18,897,109	1,243,361	6.6%
Los Angeles-Long Beach-Anaheim, CA	13,200,998	12,828,837	372,161	2.9%
Chicago-Naperville-Elgin, IL-IN-WI	9,618,502	9,461,105	157,397	1.7%
Dallas-Fort Worth-Arlington, TX	7,637,387	6,371,773	1,265,614	19.9%
Houston-The Woodlands-Sugar Land, TX	7,122,240	5,946,800	1,175,440	19.8%
Washington-Arlington-Alexandria, DC-VA-MD-WV	6,385,162	5,582,170	802,992	14.4%
Philadelphia-Camden-Wilmington, PA-NJ-DE-MD	6,245,051	5,965,343	279,708	4.7%
Miami-Fort Lauderdale-Pompano Beach, FL	6,138,333	5,564,635	573,698	10.3%
Atlanta-Sandy Springs-Alpharetta, GA	6,089,815	5,268,860	820,955	15.6%
Boston-Cambridge-Newton, MA-NH	4,941,632	4,552,402	389,230	8.5%

TABLE 5

Top Ten Fastest Growing U.S. Metropolitan Areas				
Metropolitan Area	2020 Population	2010 Population	Population Change	Percent Change
The Villages, FL	129,752	93,420	36,332	38.9%
Austin-Round Rock-Georgetown, TX	2,283,371	1,716,323	567,048	33.0%
St. George, UT	180,279	138,115	42,164	30.5%
Greeley, CO	328,981	252,827	76,154	30.1%
Myrtle Beach-Conway-North Myrtle Beach, SC-NC	487,722	376,575	111,147	29.5%
Provo-Orem, UT	671,185	526,885	144,300	27.4%
Daphne-Fairhope-Foley, AL	231,767	182,265	49,502	27.2%
Bend, OR	198,253	157,728	40,525	25.7%
Orlando-Kissimmee-Sanford, FL	2,673,376	2,134,399	538,977	25.3%
Raleigh-Cary, NC	1,413,982	1,130,493	283,489	25.1%

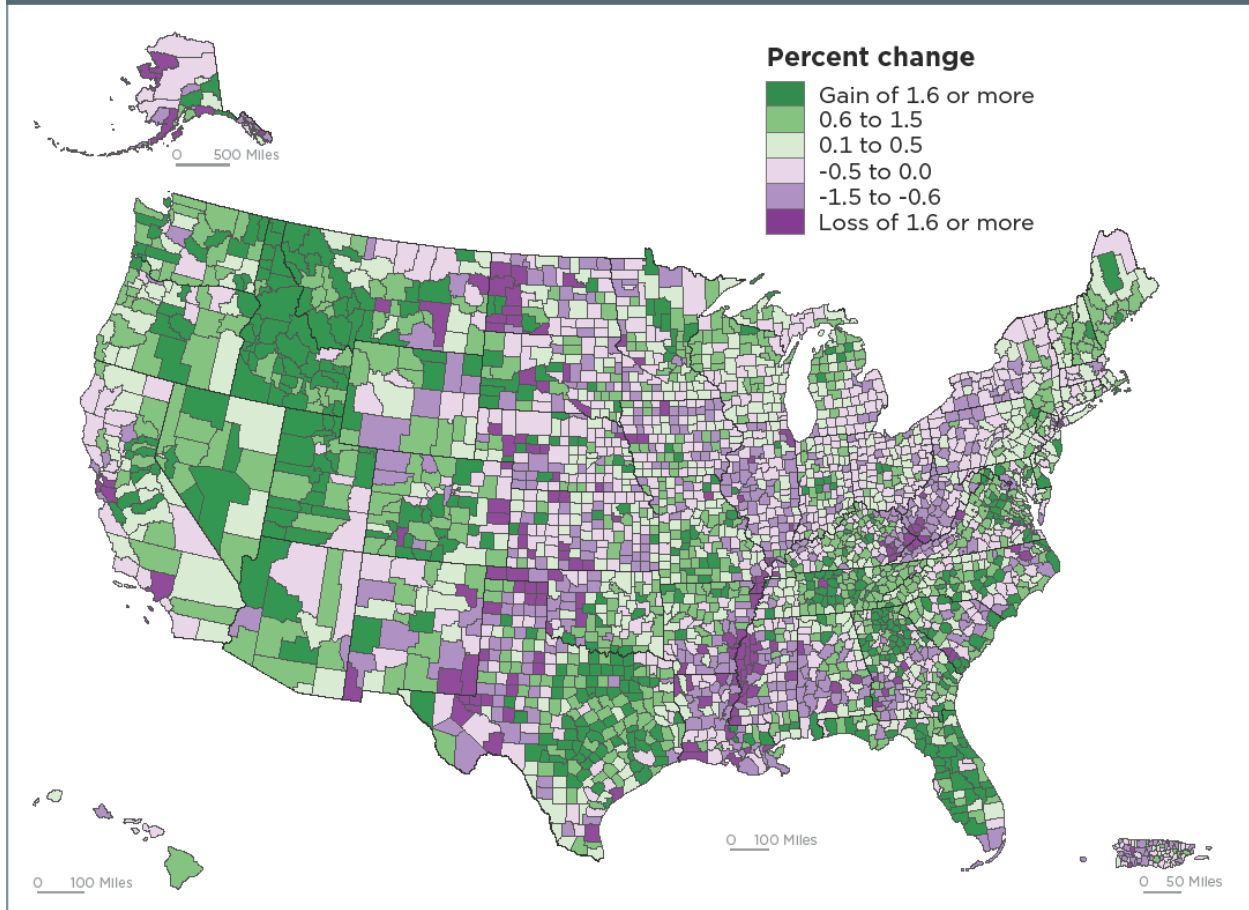
TABLE 6

Top Ten U.S. Incorporated Places by 2020 Population					
City	2020 Population	2010 Population	2000 Population	Population Change 2000-2020	Percent Change 2000-2020
New York, New York	8,804,190	8,175,133	8,008,278	795,912	9.9%
Los Angeles, California	3,893,986	3,792,621	3,694,820	199,166	5.4%
Chicago, Illinois	2,747,231	2,695,598	2,896,016	-148,785	-5.1%
Houston, Texas	2,302,792	2,099,451	1,953,631	349,161	17.9%
Phoenix, Arizona	1,607,739	1,445,632	1,321,045	286,694	21.7%
Philadelphia, Pennsylvania	1,603,797	1,526,006	1,517,550	86,247	5.7%
San Antonio, Texas	1,434,270	1,327,407	1,144,646	289,624	25.3%
San Diego, California	1,385,922	1,307,402	1,223,400	162,522	13.3%
Dallas, Texas	1,304,442	1,197,816	1,188,580	115,862	9.7%
San Jose, California	1,014,545	945,942	894,943	119,602	13.4%

CHART 4

Where Counties are Growing

Percent Change in Population by County: 2020 to 2021

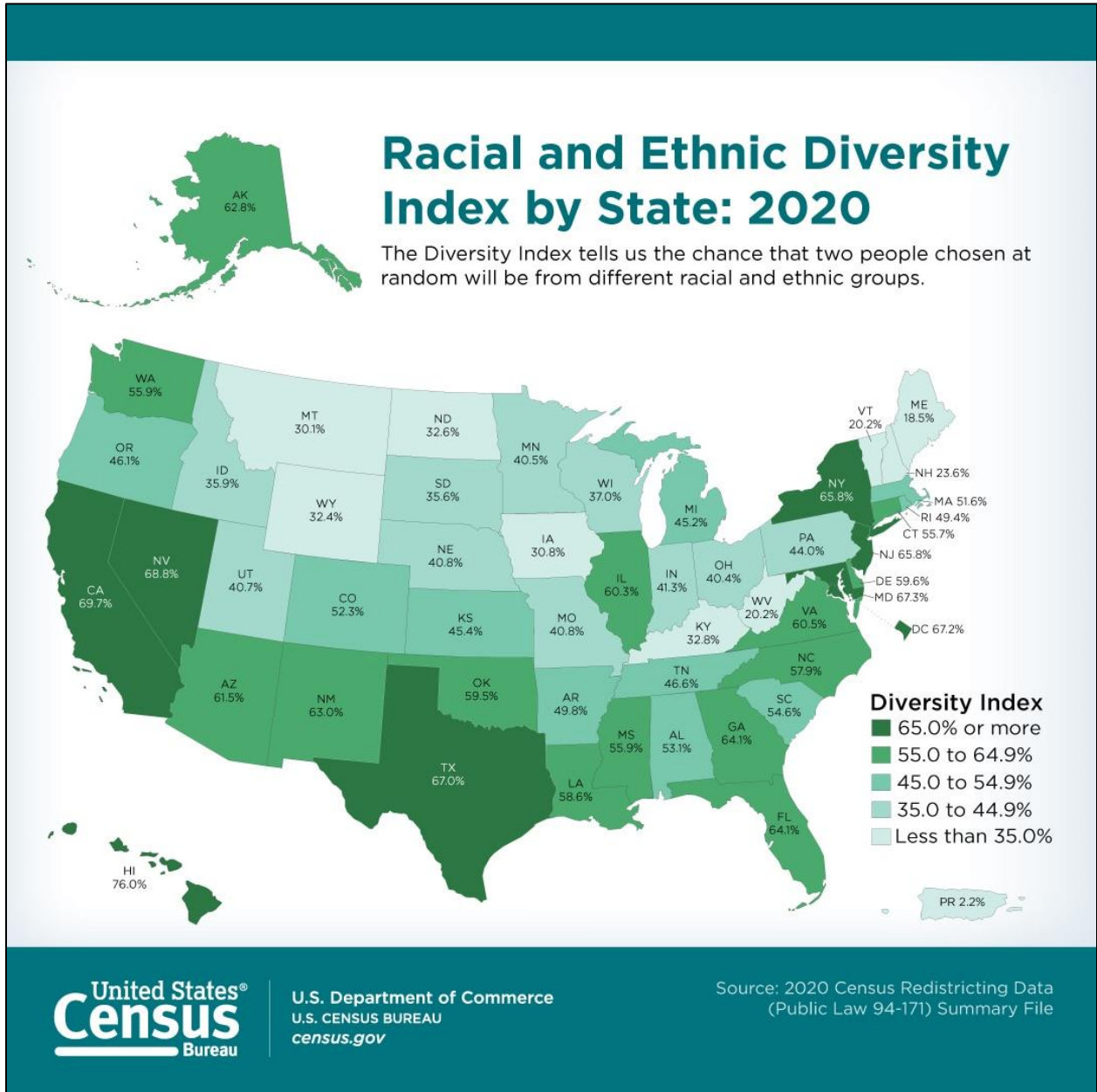


United States[®]
Census
Bureau

U.S. Department of Commerce
U.S. CENSUS BUREAU
[census.gov](https://www.census.gov)

Source: U.S. Census Bureau,
Vintage 2021 Population Estimates

CHART 5



II. A Statewide Perspective

Highlights:

- Of the 12.8 million Illinois residents counted in the 2020 Census, those 18 years and over make up 77.6% of the State's population, with the under-18 population accounting for the remaining 22.4%. Those 65 and older make up 16% of Illinois' population. This compares to a slightly higher 16.3% of the US population.
- It should be noted that the 2020 American Community Survey (also conducted by the Census Bureau with the 2020 Census, but also subject to the aforementioned undercounting) estimated the 18+ over population to be slightly less at 77.3% and the <18 population to be slightly higher at 22.7%. These figures, and the county-by-county breakout for various age groups in Illinois can be seen in Table 12 of the County Perspective section.
- In Illinois, 65.2% of the population was in the labor force, slightly above the US figure of 63.4%. 34.8% were not in the labor force, compared to the US figure of 36.6%. 70% of Illinois families with children under 6 years of age had both parents in the labor force, compared to 66.7% nationwide. Overall, 83.1% of Illinois workers worked for a private business while 12.2% worked for a unit of government.
- According to the U.S. Census Bureau's 2020 American Community Survey, the Median family income in Illinois was \$68,428. This represents an increase from the 2010 Median family income of \$65,417. This compares favorably to the U.S. figure of \$64,994. Illinois' per capita income level was \$37,306, compared to the National figure of \$35,384.
- 93.2% of all Illinois civilian noninstitutionalized residents had health insurance coverage. In the 19-64 years of age bracket, 91.5% of employed residents had health insurance while 79.3% of unemployed residents had coverage.
- The latest survey shows that 12.0% of Illinois residents had income in the past 12 months below the poverty level (compared to 13.8% in 2010). Of those under 18 years, 16.2% fell below the poverty level at one time in the past 12 months (compared to 19.4% in 2010).
- In terms of race, White persons continue to make the majority of Illinois' population at 61.4%, though this is a significant decline from 71.5% in the 2010 Census. However, this decline is in large part due to Census classification of multi-race individuals, as compared to prior-year census tabulations. Black or African American persons comprise 14.1% in 2020, slightly down from 14.5% of the State's population in 2010. Asian persons account for 5.9% in 2020, up from 4.6% in 2010 (See Table 17). Approximately 2.3 million Illinois residents or 18.2% of the population responded in the Census to be Hispanic or Latino persons in 2020, compared to 15.8% (or 2.0 million) in 2010 (See Tables 10 and 18).

TABLE 7

Estimate of the Resident Population for Selected Age Groups by Sex for Illinois and US: April 2020												
Age	Illinois Population Estimates (April 2020)						National Population Estimates (April 2020)					
	Both Sexes	Illinois % of Total	Male	Male % of Total	Female	Female % of Total	Both Sexes	Illinois Percent of Total	Male	Illinois Male % of Total	Female	Illinois Female % of Total
Total	12,812,508	100.0%	6,334,948	100.0%	6,477,560	100.0%	331,449,281	100.0%	164,192,524	100.0%	167,256,757	100.0%
Under 5 years	739,830	5.8%	378,026	3.0%	361,804	2.8%	19,392,551	3.8%	9,914,763	3.8%	9,477,788	3.8%
5 to 9 years	776,239	6.1%	397,490	3.1%	378,749	3.0%	20,358,727	3.8%	10,419,034	3.8%	9,939,693	3.8%
10 to 14 years	844,062	6.6%	430,896	3.4%	413,166	3.2%	21,738,484	3.9%	11,130,480	3.9%	10,608,004	3.9%
15 to 19 years	844,871	6.6%	432,771	3.4%	412,100	3.2%	21,546,953	3.9%	11,011,078	3.9%	10,535,875	3.9%
20 to 24 years	823,439	6.4%	416,811	3.3%	406,628	3.2%	21,468,520	3.8%	10,947,117	3.8%	10,521,403	3.9%
25 to 29 years	878,974	6.9%	442,416	3.5%	436,558	3.4%	22,893,386	3.8%	11,620,825	3.8%	11,272,561	3.9%
30 to 34 years	870,192	6.8%	440,227	3.4%	429,965	3.4%	22,823,412	3.8%	11,549,559	3.8%	11,273,853	3.8%
35 to 39 years	867,441	6.8%	438,062	3.4%	429,379	3.4%	22,210,770	3.9%	11,213,905	3.9%	10,996,865	3.9%
40 to 44 years	814,186	6.4%	409,967	3.2%	404,219	3.2%	20,567,777	4.0%	10,313,874	4.0%	10,253,903	3.9%
45 to 49 years	803,989	6.3%	402,885	3.1%	401,104	3.1%	20,435,954	3.9%	10,219,712	3.9%	10,216,242	3.9%
50 to 54 years	812,291	6.3%	406,010	3.2%	406,281	3.2%	20,771,419	3.9%	10,362,015	3.9%	10,409,404	3.9%
55 to 59 years	863,007	6.7%	427,229	3.3%	435,778	3.4%	22,107,075	3.9%	10,891,962	3.9%	11,215,113	3.9%
60 to 64 years	821,622	6.4%	401,096	3.1%	420,526	3.3%	20,997,624	3.9%	10,209,367	3.9%	10,788,257	3.9%
65 to 69 years	682,723	5.3%	325,425	2.5%	357,298	2.8%	17,899,217	3.8%	8,506,484	3.8%	9,392,733	3.8%
70 to 74 years	533,568	4.2%	247,247	1.9%	286,321	2.2%	14,447,123	3.7%	6,751,606	3.7%	7,695,517	3.7%
75 to 79 years	357,178	2.8%	157,934	1.2%	199,244	1.6%	9,616,765	3.7%	4,341,518	3.6%	5,275,247	3.8%
80 to 84 years	234,183	1.8%	96,982	0.8%	137,201	1.1%	6,128,212	3.8%	2,617,391	3.7%	3,510,821	3.9%
85 years and over	244,713	1.9%	83,474	0.7%	161,239	1.3%	6,045,312	4.0%	2,171,834	3.8%	3,873,478	4.2%
Under 18 years	2,873,032	22.4%	1,469,066	11.5%	1,403,966	11.0%	74,385,212	22.4%	38,056,165	11.5%	36,329,047	11.0%
Under 5 years	739,830	5.8%	378,026	3.0%	361,804	2.8%	19,392,551	5.9%	9,914,763	3.0%	9,477,788	2.9%
5 to 13 years	1,450,480	11.3%	741,656	5.8%	708,824	5.5%	37,767,621	11.4%	19,334,812	5.8%	18,432,809	5.6%
14 to 17 years	682,722	5.3%	349,384	2.7%	333,338	2.6%	17,225,040	5.2%	8,806,590	2.7%	8,418,450	2.5%
18 to 64 years	7,887,111	61.6%	3,954,820	30.9%	3,932,291	30.7%	202,927,440	61.2%	101,747,526	30.7%	101,179,914	30.5%
18 to 24 years	1,155,409	9.0%	586,928	4.6%	568,481	4.4%	30,120,023	9.1%	15,366,307	4.6%	14,753,716	4.5%
25 to 44 years	3,430,793	26.8%	1,730,672	13.5%	1,700,121	13.3%	88,495,345	26.7%	44,698,163	13.5%	43,797,182	13.2%
45 to 64 years	3,300,909	25.8%	1,637,220	12.8%	1,663,689	13.0%	84,312,072	25.4%	41,683,056	12.6%	42,629,016	12.9%
65 years and over	2,052,365	16.0%	911,062	7.1%	1,141,303	8.9%	54,136,629	16.3%	24,388,833	7.4%	29,747,796	9.0%
16 years and over	10,282,626	80.3%	5,041,422	39.3%	5,241,204	40.9%	265,666,151	80.2%	130,532,351	39.4%	135,133,800	40.8%
18 years and over	9,939,476	77.6%	4,865,882	38.0%	5,073,594	39.6%	257,064,069	77.6%	126,136,359	38.1%	130,927,710	39.5%
15 to 44 years	5,099,103	39.8%	2,580,254	20.1%	2,518,849	19.7%	131,510,818	39.7%	66,656,358	20.1%	64,854,460	19.6%
Median age (years)	38.6		37.6		39.7		38.5		37.4		39.5	

Source: U.S. Census Bureau April 2020 population estimate data used.

TABLE 8

Profile of General Population Characteristics: 2020				
Subject	US Estimate	US Percent	Illinois Estimate	Illinois Percent
EMPLOYMENT STATUS				
Population 16 years and over	261,649,873	261,649,873	10,193,604	10,193,604
In labor force	165,902,838	63.4%	6,650,033	65.2%
Civilian labor force	164,759,496	63.0%	6,631,897	65.1%
Employed	155,888,980	59.6%	6,236,755	61.2%
Unemployed	8,870,516	3.4%	395,142	3.9%
Armed Forces	1,143,342	0.4%	18,136	0.2%
Not in labor force	95,747,035	36.6%	3,543,571	34.8%
Civilian labor force	164,759,496	164,759,496	6,631,897	6,631,897
Unemployment Rate	(X)	5.4%	(X)	6.0%
Females 16 years and over	134,001,493	134,001,493	5,235,050	5,235,050
In labor force	78,484,558	58.6%	3,172,743	60.6%
Civilian labor force	78,314,931	58.4%	3,169,476	60.5%
Employed	74,173,483	55.4%	2,985,705	57.0%
Own children of the householder under 6 years	22,558,766	22,558,766	870,754	870,754
All parents in family in labor force	15,045,945	66.7%	609,430	70.0%
Own children of the householder 6 to 17 years	46,908,286	46,908,286	1,863,547	1,863,547
All parents in family in labor force	33,697,040	71.8%	1,387,411	74.5%
COMMUTING TO WORK				
Workers 16 years and over	153,665,654	153,665,654	6,129,176	6,129,176
Car, truck, or van -- drove alone	115,127,720	74.9%	4,385,276	71.5%
Car, truck, or van -- carpooled	13,605,122	8.9%	476,964	7.8%
Public transportation (excluding taxicab)	7,044,886	4.6%	539,825	8.8%
Walked	3,954,692	2.6%	173,791	2.8%
Other means	2,780,139	1.8%	110,771	1.8%
Worked from home	11,153,095	7.3%	442,549	7.2%
Mean travel time to work (minutes)	26.9	(X)	29.0	(X)
OCCUPATION				
Civilian employed population 16 years and over	155,888,980	155,888,980	6,236,755	6,236,755
Management, business, science, and arts occupations	61,526,906	39.5%	2,480,774	39.8%
Service occupations	27,095,654	17.4%	1,046,689	16.8%
Sales and office occupations	33,247,878	21.3%	1,339,084	21.5%
Natural resources, construction, and maintenance occupations	13,620,436	8.7%	450,957	7.2%
Production, transportation, and material moving occupations	20,398,106	13.1%	919,251	14.7%

TABLE 8 (continued)

Profile of General Population Characteristics: 2020				
Subject	US Estimate	US Percent	Illinois Estimate	Illinois Percent
INDUSTRY				
Civilian employed population 16 years and over	155,888,980	155,888,980	6,236,755	6,236,755
Agriculture, forestry, fishing and hunting, and mining	2,658,413	1.7%	64,517	1.0%
Construction	10,416,196	6.7%	337,964	5.4%
Manufacturing	15,617,461	10.0%	732,288	11.7%
Wholesale trade	3,971,773	2.5%	183,625	2.9%
Retail trade	17,195,083	11.0%	655,746	10.5%
Transportation and warehousing, and utilities	8,576,862	5.5%	415,278	6.7%
Information	3,066,743	2.0%	110,005	1.8%
Finance and insurance, and real estate and rental and leasing	10,319,201	6.6%	458,078	7.3%
Professional, scientific, and management, and administrative and waste management services	18,312,454	11.7%	753,663	12.1%
Educational services, and health care and social assistance	36,315,080	23.3%	1,452,209	23.3%
Arts, entertainment, and recreation, and accommodation and food services	14,651,909	9.4%	548,147	8.8%
Other services, except public administration	7,516,616	4.8%	293,602	4.7%
Public administration	7,271,189	4.7%	231,633	3.7%
CLASS OF WORKER				
Civilian employed population 16 years and over	155,888,980	155,888,980	6,236,755	6,236,755
Private wage and salary workers	124,611,544	79.9%	5,180,173	83.1%
Government workers	21,743,101	13.9%	760,010	12.2%
Self-employed in own not incorporated business workers	9,243,835	5.9%	286,133	4.6%
Unpaid family workers	290,500	0.2%	10,439	0.2%

TABLE 8 (continued)

Profile of General Population Characteristics: 2020				
Subject	US Estimate	US Percent	Illinois Estimate	Illinois Percent
INCOME AND BENEFITS (IN 2020 INFLATION-ADJUSTED DOLLARS)				
Total households	122,354,219	122,354,219	4,884,061	4,884,061
Less than \$10,000	7,145,751	5.8%	298,656	6.1%
\$10,000 to \$14,999	5,020,097	4.1%	179,484	3.7%
\$15,000 to \$24,999	10,359,700	8.5%	396,382	8.1%
\$25,000 to \$34,999	10,569,484	8.6%	394,653	8.1%
\$35,000 to \$49,999	14,690,382	12.0%	548,980	11.2%
\$50,000 to \$74,999	21,034,779	17.2%	815,673	16.7%
\$75,000 to \$99,999	15,613,243	12.8%	627,786	12.9%
\$100,000 to \$149,999	19,128,938	15.6%	810,249	16.6%
\$150,000 to \$199,999	8,688,154	7.1%	380,160	7.8%
\$200,000 or more	10,103,691	8.3%	432,038	8.8%
Median household income (dollars)	64,994	(X)	68,428	(X)
Mean household income (dollars)	91,547	(X)	95,115	(X)
With earnings	95,088,085	77.7%	3,830,680	78.4%
Mean earnings (dollars)	93,265	(X)	97,662	(X)
With Social Security	38,442,718	31.4%	1,424,848	29.2%
Mean Social Security income (dollars)	20,126	(X)	20,054	(X)
With retirement income	25,872,444	21.1%	992,365	20.3%
Mean retirement income (dollars)	28,376	(X)	31,223	(X)
With Supplemental Security Income	6,403,843	5.2%	222,462	4.6%
Mean Supplemental Security Income (dollars)	10,115	(X)	10,336	(X)
With cash public assistance income	2,995,159	2.4%	114,262	2.3%
Mean cash public assistance income (dollars)	3,271	(X)	3,047	(X)
With Food Stamp/SNAP benefits in the past 12 months	13,892,407	11.4%	605,910	12.4%
Families	79,849,830	79,849,830	3,116,415	3,116,415
Less than \$10,000	2,784,559	3.5%	104,162	3.3%
\$10,000 to \$14,999	1,737,891	2.2%	60,848	2.0%
\$15,000 to \$24,999	4,608,727	5.8%	164,805	5.3%
\$25,000 to \$34,999	5,671,464	7.1%	195,986	6.3%
\$35,000 to \$49,999	8,744,513	11.0%	313,048	10.0%
\$50,000 to \$74,999	13,857,979	17.4%	507,572	16.3%
\$75,000 to \$99,999	11,445,632	14.3%	441,635	14.2%
\$100,000 to \$149,999	15,185,857	19.0%	640,001	20.5%
\$150,000 to \$199,999	7,235,024	9.1%	318,273	10.2%
\$200,000 or more	8,578,184	10.7%	370,085	11.9%
Median family income (dollars)	80,069	(X)	86,251	(X)
Mean family income (dollars)	107,335	(X)	113,734	(X)
Per capita income (dollars)	35,384	(X)	37,306	(X)
Nonfamily households	42,504,389	42,504,389	1,767,646	1,767,646
Median nonfamily income (dollars)	39,027	(X)	40,774	(X)
Mean nonfamily income (dollars)	57,648	(X)	58,782	(X)
Median earnings for workers (dollars)	36,280	(X)	38,645	(X)
Median earnings for male full-time, year-round workers (dollars)	54,323	(X)	59,310	(X)
Median earnings for female full-time, year-round workers (dollars)	44,220	(X)	47,045	(X)

TABLE 8 Continued

Profile of General Population Characteristics: 2020				
Subject	US Estimate	US Percent	Illinois Estimate	Illinois Percent
HEALTH INSURANCE COVERAGE				
Civilian noninstitutionalized population	321,525,041	321,525,041	12,536,614	12,536,614
With health insurance coverage	293,466,138	91.3%	11,682,181	93.2%
With private health insurance	218,830,578	68.1%	8,854,882	70.6%
With public coverage	113,410,193	35.3%	4,220,945	33.7%
No health insurance coverage	28,058,903	8.7%	854,433	6.8%
Civilian noninstitutionalized population under 19 years	77,582,280	77,582,280	3,023,805	3,023,805
No health insurance coverage	4,016,835	5.2%	94,660	3.1%
Civilian noninstitutionalized population 19 to 64 years	192,870,537	192,870,537	7,587,045	7,587,045
In labor force:	150,997,488	150,997,488	6,089,470	6,089,470
Employed:	143,214,283	143,214,283	5,740,280	5,740,280
With health insurance coverage	127,785,204	89.2%	5,252,224	91.5%
With private health insurance	116,559,349	81.4%	4,793,031	83.5%
With public coverage	15,001,155	10.5%	572,562	10.0%
No health insurance coverage	15,429,079	10.8%	488,056	8.5%
Unemployed:	7,783,205	7,783,205	349,190	349,190
With health insurance coverage	5,696,312	73.2%	276,773	79.3%
With private health insurance	3,265,196	42.0%	147,823	42.3%
With public coverage	2,677,987	34.4%	137,928	39.5%
No health insurance coverage	2,086,893	26.8%	72,417	20.7%
Not in labor force:	41,873,049	41,873,049	1,497,575	1,497,575
With health insurance coverage	35,748,538	85.4%	1,315,193	87.8%
With private health insurance	21,659,932	51.7%	821,605	54.9%
With public coverage	17,036,758	40.7%	568,989	38.0%
No health insurance coverage	6,124,511	14.6%	182,382	12.2%
PERCENTAGE OF FAMILIES AND PEOPLE WHOSE INCOME IN THE PAST 12 MONTHS IS BELOW THE POVERTY LEVEL				
All families	(X)	9.1%	(X)	8.4%
With related children of the householder under 18 years	(X)	14.3%	(X)	13.3%
With related children of the householder under 5 years only	(X)	13.5%	(X)	12.6%
Married couple families	(X)	4.6%	(X)	3.8%
With related children of the householder under 18 years	(X)	6.2%	(X)	5.1%
With related children of the householder under 5 years only	(X)	4.8%	(X)	3.8%
Families with female householder, no spouse present	(X)	25.1%	(X)	24.8%
With related children of the householder under 18 years	(X)	34.4%	(X)	33.7%
With related children of the householder under 5 years only	(X)	38.8%	(X)	39.1%
All people	(X)	12.8%	(X)	12.0%
Under 18 years	(X)	17.5%	(X)	16.2%
Related children of the householder under 18 years	(X)	17.2%	(X)	15.9%
Related children of the householder under 5 years	(X)	19.1%	(X)	17.6%
Related children of the householder 5 to 17 years	(X)	16.4%	(X)	15.2%
18 years and over	(X)	11.5%	(X)	10.8%
18 to 64 years	(X)	12.1%	(X)	11.3%
65 years and over	(X)	9.3%	(X)	8.8%
People in families	(X)	10.1%	(X)	9.3%
Unrelated individuals 15 years and over	(X)	24.2%	(X)	23.0%

TABLE 9

Population by Race, Including All Specific Combinations of Two Races, for Illinois: 2010-2020				
Race	2010 Number	Percent of total population	2020 Number	Percent of total population
Total population.....	12,830,632	100.0	12,812,508	100.0
One Race.....	12,540,650	97.7	11,667,524	91.1
Two or More Races.....	289,982	2.3	1,144,984	8.9
Two races.....	272,768	2.1	1,087,260	8.5
White; Black or African American.....	70,615	0.6	111,307	0.9
White; American Indian and Alaska Native.....	32,749	0.3	107,871	0.8
White; Asian.....	56,258	0.4	90,923	0.7
White; Native Hawaiian and Other Pacific Islander.....	2,682	-	3,101	0.0
White; Some Other Race.....	66,820	0.5	697,568	5.4
Black or African American; American Indian and Alaska Native.....	8,057	0.1	12,187	0.1
Black or African American; Asian.....	4,935	-	6,283	0.0
Black or African American; Native Hawaiian and Other Pacific Islander.....	898	-	716	0.0
Black or African American; Some Other Race.....	10,103	0.1	23,028	0.2
American Indian and Alaska Native; Asian.....	2,009	-	1,470	0.0
American Indian and Alaska Native; Native Hawaiian and Other Pacific Islander.....	109	-	168	0.0
American Indian and Alaska Native; Some Other Race.....	3,435	-	23,158	0.2
Asian; Native Hawaiian and Other Pacific Islander.....	1,994	-	2,673	0.0
Asian; Some Other Race.....	10,524	0.1	5,233	0.0
Native Hawaiian and Other Pacific Islander; Some Other Race.....	1,580	-	1,574	0.0
Three or more races.....	17,214	0.1	57,724	0.5

Source: U.S. Census Bureau

TABLE 10

2020 Population by Race and Hispanic or Latino Origin for all Ages and for 18 Years and Over for Illinois		
Category	2020 Number	2020 Percent
Total for All Ages	12,812,508	100.0%
Hispanic or Latino	2,337,410	18.2%
Not Hispanic or Latino	10,475,098	81.8%
Population of one race	10,060,243	78.5%
White alone	7,472,751	58.3%
Black or African American alone	1,775,612	13.9%
American Indian and Alaska Native alone	16,561	0.1%
Asian alone	747,280	5.8%
Native Hawaiian and Other Pacific Islander alone	2,959	0.0%
Some Other Race alone	45,080	0.4%
Population of two or more races	414,855	3.2%
Total for 18 and Over	9,999,469	100.0%
Hispanic or Latino	1,620,312	16.2%
Not Hispanic or Latino	8,379,157	83.8%
Population of one race	8,124,118	81.2%
White alone	6,123,548	61.2%
Black or African American alone	1,356,415	13.6%
American Indian and Alaska Native alone	13,313	0.1%
Asian alone	596,814	6.0%
Native Hawaiian and Other Pacific Islander alone	2,354	0.0%
Some Other Race alone	31,674	0.3%
Population of two or more races	255,039	2.6%

Source: US Census Bureau

III. A County-by-County Perspective

Highlights:

- Cook County continues to be the largest county in terms of population with approximately 5.3 million people. In second was DuPage County (as in 2010) with 0.9 million people. The counties of Lake, Will, and Kane rounded out the top five as before in 2010.
- Kendall County had the largest increase (percent change) of any Illinois county between 2020 and 2010, (as was the case between 2000 and 2010), increasing 14.9% (compared to 110.4% in 2010). The comparative growth in the period from 2010 to 2020 appears to have slowed down significantly compared to the last census, as only Monroe (6.1%), Johnson (5.8%), and Grundy County (4.9%) had an increase in population of at least 4%. Cook County grew by the most people increasing their population by over 80,866 in the last decade.
- The smallest of the 102 counties, in terms of population, was once again Hardin County with a 2020 census count of 3,649 residents, compared to a 2010 census count of 4,320 residents. The county with the largest falloff (percent change) over the decade was Alexander County, which fell 36% to a 2020 population of 5,240 residents. St. Clair County lost the most people over the last decade falling -4.7% or 12,656 people.
- In terms of a county's race composition, the county with the highest composition of White persons was Jasper County at 96.9%. The county with the highest composition of Black or African American persons was Alexander County at 29.8%. The county with the highest composition of Asian persons was Champaign County at 13.2%. The county with the highest composition of people responding in the Census to be Hispanic or Latino persons background was Kane County at 32.8%.
- According to the 2020 Census, statewide, 60.2% of households lived in owner-occupied housing (37.8% of households lived in a house "owned with a mortgage or loan" and 22.4% of households were "owned without a mortgage"), while 30.6% lived in renter-occupied housing. In owner-occupied housing, the county with the highest composition of "renter occupied" households was Jackson County at 49.6%. The county with the highest composition of houses owned with a mortgage was Kendall at 65.8%. The county with the highest composition of owner-occupied households "owned without a mortgage" was Pope County at 52.6%.
- On average, according to the 2020 American Community Survey, the county with the highest component of < 18 year-olds was Kendall County at 28.5% of the county's population. The county with the lowest component of < 18 year-olds was Hardin County at 14.2%.
- The county with the highest component of 65+ year-olds was Pope County at 31.2% of the county's population. The county with the lowest component of 65+ year-olds was Kendall County at 10.3% of their county's population.

TABLE 11

Top Twenty Illinois Counties by 2020 Population					
Ranking	County	2020 Population	Ranking	County	2020 Population
1	Cook	5,275,541	11	Sangamon	196,343
2	DuPage	932,877	12	Peoria	181,830
3	Lake	714,342	13	McLean	170,954
4	Will	696,355	14	Rock Island	144,672
5	Kane	516,522	15	Kendall	131,869
6	McHenry	310,229	16	Tazewell	131,343
7	Winnebago	285,350	17	LaSalle	109,658
8	Madison	265,859	18	Kankakee	107,502
9	St. Clair	257,400	19	Macon	103,998
10	Champaign	205,865	20	DeKalb	100,420

Top Twenty Illinois Counties by Percent Change in Population from 2010 to 2020					
Ranking	County	Percent Change	Ranking	County	Percent Change
1	Kendall	14.9%	11	Effingham	1.2%
2	Monroe	6.1%	12	Williamson	1.2%
3	Johnson	5.8%	13	McLean	0.8%
4	Grundy	4.9%	14	McHenry	0.5%
5	Will	2.8%	15	Kane	0.2%
6	Champaign	2.4%	16	Piatt	-0.3%
7	Carroll	2.0%	17	Woodford	-0.5%
8	DuPage	1.7%	18	Sangamon	-0.6%
9	Cook	1.6%	19	Douglas	-1.2%
10	Lake	1.5%	20	Madison	-1.3%

Top Twenty Illinois Counties by Change in Population from 2010 to 2020					
Ranking	County	# Change in Population	Ranking	County	# Change in Population
1	Cook	80,866	11	Kane	1,253
2	Will	18,795	12	Williamson	796
3	Kendall	17,133	13	Johnson	726
4	DuPage	15,953	14	Effingham	426
5	Lake	10,880	15	Carroll	315
6	Champaign	4,784	16	Piatt	(56)
7	Grundy	2,470	17	Woodford	(197)
8	Monroe	2,005	18	Douglas	(240)
9	McHenry	1,469	19	Moultrie	(320)
10	McLean	1,382	20	Putnam	(369)

CHART 6

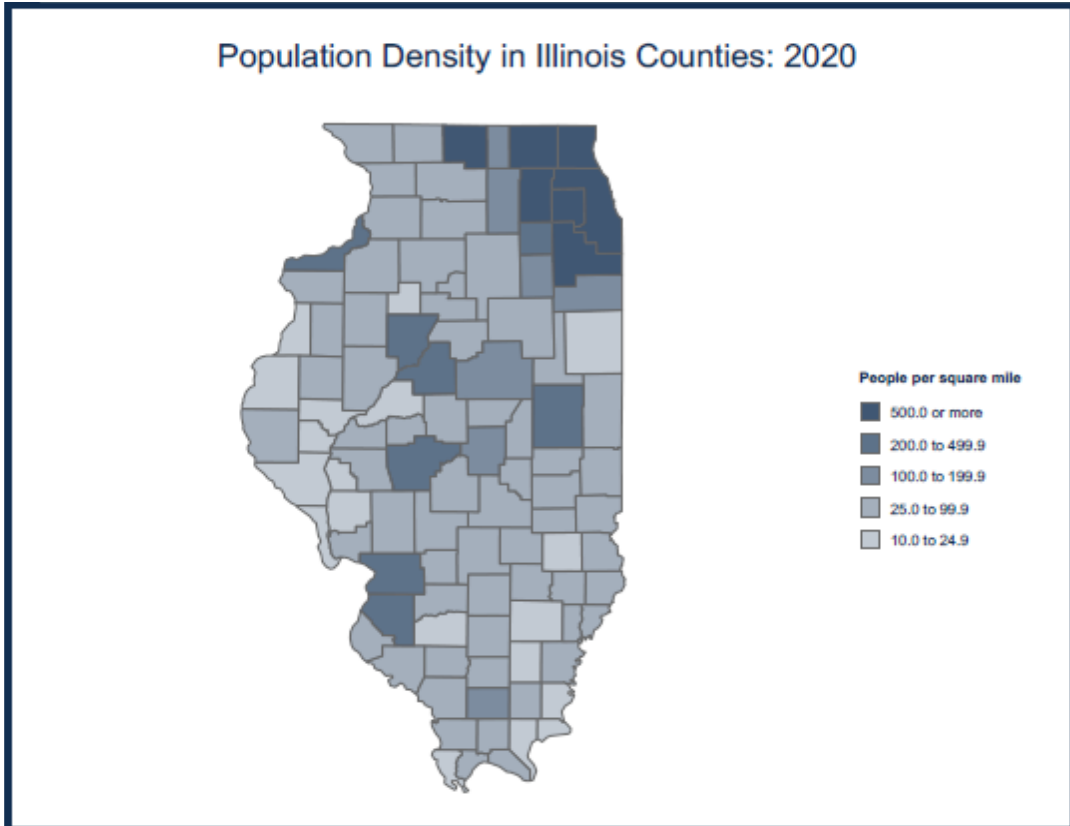


CHART 7

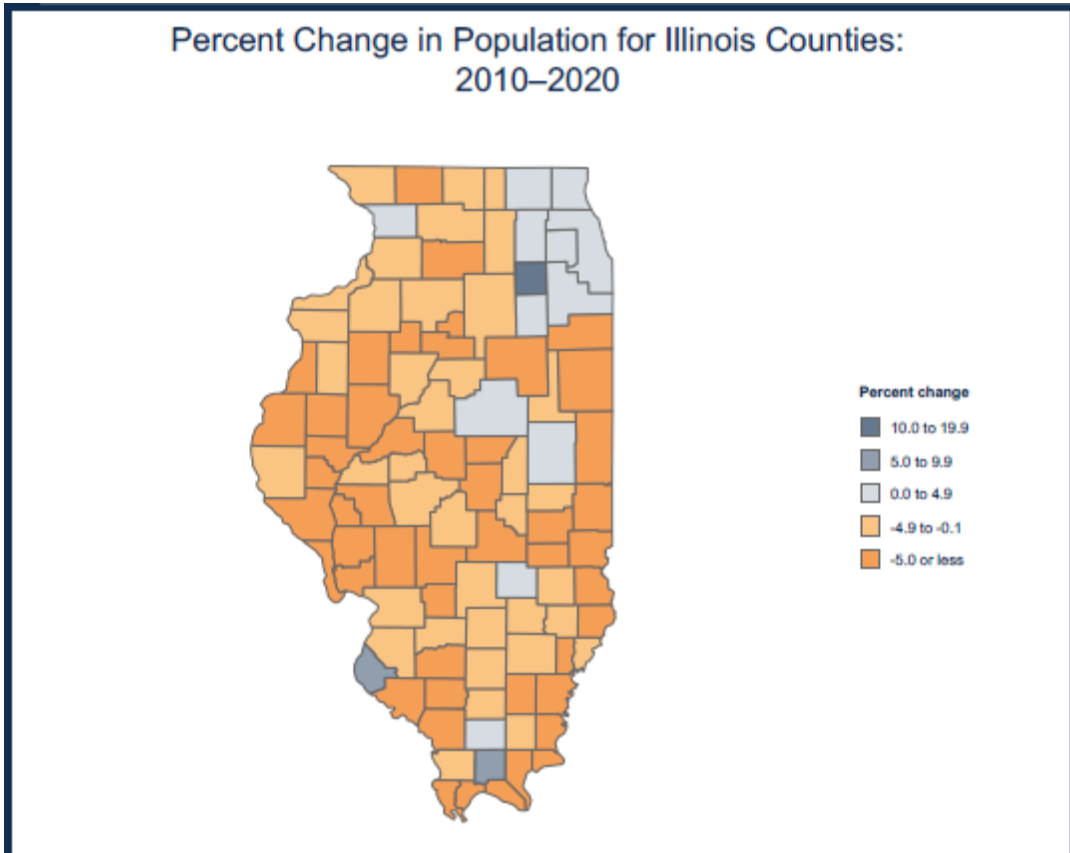


CHART 8

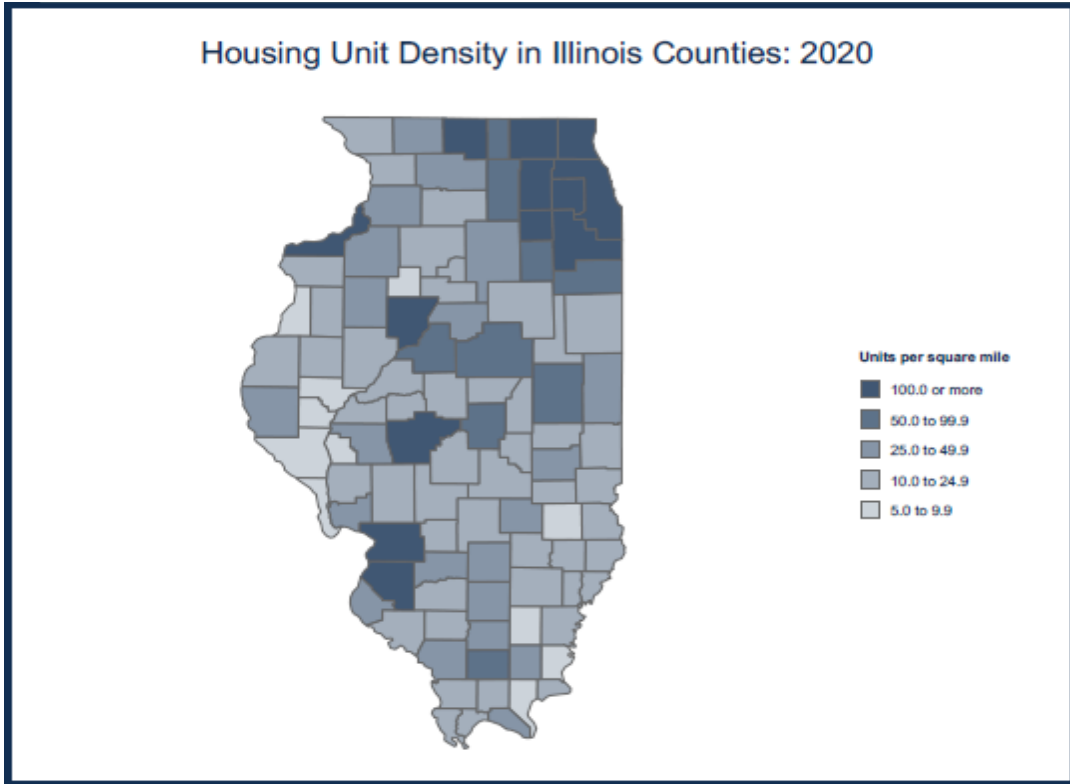


CHART 9

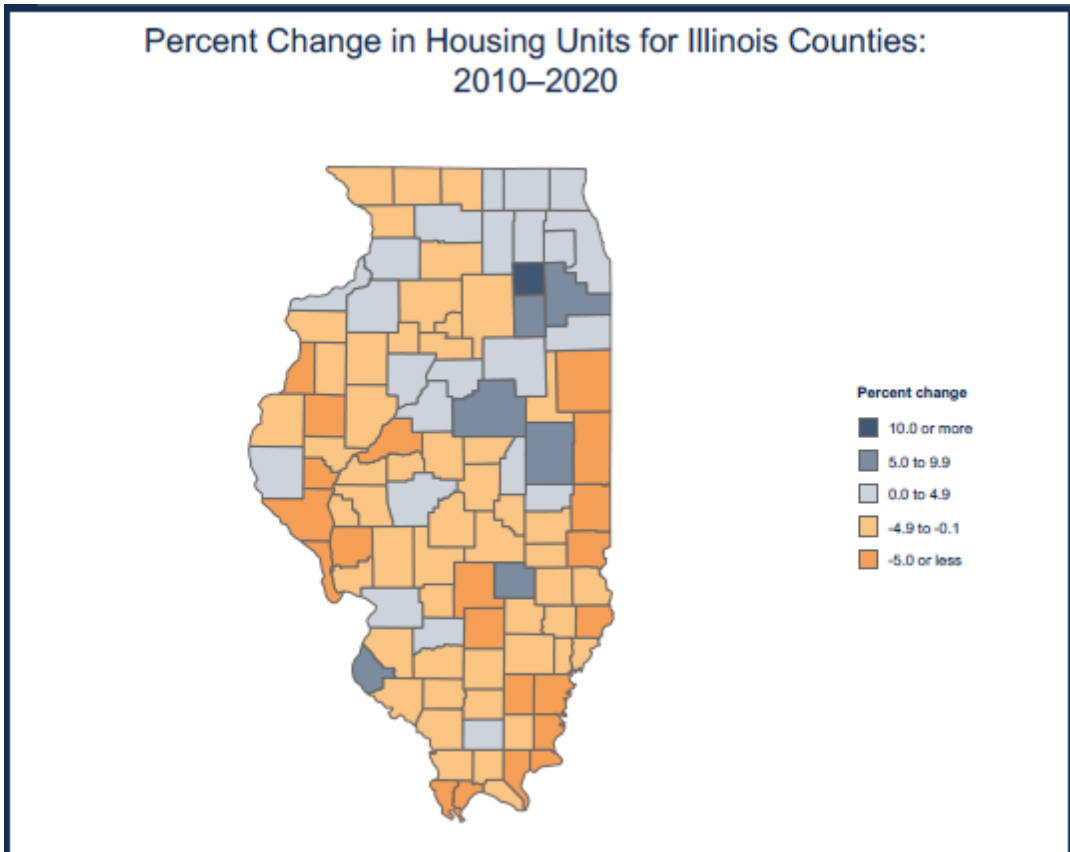


TABLE 12

Illinois Population by County - 2020 Census						
County	Number	% of Total		County	Number	% of Total
Adams	65,737	0.51%		Lee	34,145	0.27%
Alexander	5,240	0.04%		Livingston	35,815	0.28%
Bond	16,725	0.13%		Logan	27,987	0.22%
Boone	53,448	0.42%		McDonough	27,238	0.21%
Brown	6,244	0.05%		McHenry	310,229	2.42%
Bureau	33,244	0.26%		McLean	170,954	1.33%
Calhoun	4,437	0.03%		Macon	103,998	0.81%
Carroll	15,702	0.12%		Macoupin	44,967	0.35%
Cass	13,042	0.10%		Madison	265,859	2.07%
Champaign	205,865	1.61%		Marion	37,729	0.29%
Christian	34,032	0.27%		Marshall	11,742	0.09%
Clark	15,455	0.12%		Mason	13,086	0.10%
Clay	13,288	0.10%		Massac	14,169	0.11%
Clinton	36,899	0.29%		Menard	12,297	0.10%
Coles	46,863	0.37%		Mercer	15,699	0.12%
Cook	5,275,541	41.17%		Monroe	34,962	0.27%
Crawford	18,679	0.15%		Montgomery	28,288	0.22%
Cumberland	10,450	0.08%		Morgan	32,915	0.26%
DeKalb	100,420	0.78%		Moultrie	14,526	0.11%
De Witt	15,516	0.12%		Ogle	51,788	0.40%
Douglas	19,740	0.15%		Peoria	181,830	1.42%
DuPage	932,877	7.28%		Perry	20,945	0.16%
Edgar	16,866	0.13%		Piatt	16,673	0.13%
Edwards	6,245	0.05%		Pike	14,739	0.12%
Effingham	34,668	0.27%		Pope	3,763	0.03%
Fayette	21,488	0.17%		Pulaski	5,193	0.04%
Ford	13,534	0.11%		Putnam	5,637	0.04%
Franklin	37,804	0.30%		Randolph	30,163	0.24%
Fulton	33,609	0.26%		Richland	15,813	0.12%
Gallatin	4,946	0.04%		Rock Island	144,672	1.13%
Greene	11,985	0.09%		St. Clair	257,400	2.01%
Grundy	52,533	0.41%		Saline	23,768	0.19%
Hamilton	7,993	0.06%		Sangamon	196,343	1.53%
Hancock	17,620	0.14%		Schuyler	6,902	0.05%
Hardin	3,649	0.03%		Scott	4,949	0.04%
Henderson	6,387	0.05%		Shelby	20,990	0.16%
Henry	49,284	0.38%		Stark	5,400	0.04%
Iroquois	27,077	0.21%		Stephenson	44,630	0.35%
Jackson	52,974	0.41%		Tazewell	131,343	1.03%
Jasper	9,287	0.07%		Union	17,244	0.13%
Jefferson	37,113	0.29%		Vermilion	74,188	0.58%
Jersey	21,512	0.17%		Wabash	11,361	0.09%
Jo Daviess	22,035	0.17%		Warren	16,835	0.13%
Johnson	13,308	0.10%		Washington	13,761	0.11%
Kane	516,522	4.03%		Wayne	16,179	0.13%
Kankakee	107,502	0.84%		White	13,877	0.11%
Kendall	131,869	1.03%		Whiteside	55,691	0.43%
Knox	49,967	0.39%		Will	696,355	5.43%
Lake	714,342	5.58%		Williamson	67,153	0.52%
LaSalle	109,658	0.86%		Winnebago	285,350	2.23%
Lawrence	15,280	0.12%		Woodford	38,467	0.30%

Source: census.gov.

TABLE 13

Illinois Population by County - 2010 Census						
County	Number	% of Total		County	Number	% of Total
Adams	67,103	0.52%		Lee	36,031	0.28%
Alexander	8,238	0.06%		Livingston	38,950	0.30%
Bond	17,768	0.14%		Logan	30,305	0.24%
Boone	54,165	0.42%		McDonough	32,612	0.25%
Brown	6,937	0.05%		McHenry	308,760	2.41%
Bureau	34,978	0.27%		McLean	169,572	1.32%
Calhoun	5,089	0.04%		Macon	110,768	0.86%
Carroll	15,387	0.12%		Macoupin	47,765	0.37%
Cass	13,642	0.11%		Madison	269,282	2.10%
Champaign	201,081	1.57%		Marion	39,437	0.31%
Christian	34,800	0.27%		Marshall	12,640	0.10%
Clark	16,335	0.13%		Mason	14,666	0.11%
Clay	13,815	0.11%		Massac	15,429	0.12%
Clinton	37,762	0.29%		Menard	12,705	0.10%
Coles	53,873	0.42%		Mercer	16,434	0.13%
Cook	5,194,675	40.49%		Monroe	32,957	0.26%
Crawford	19,817	0.15%		Montgomery	30,104	0.23%
Cumberland	11,048	0.09%		Morgan	35,547	0.28%
DeKalb	105,160	0.82%		Moultrie	14,846	0.12%
De Witt	16,561	0.13%		Ogle	53,497	0.42%
Douglas	19,980	0.16%		Peoria	186,494	1.45%
DuPage	916,924	7.15%		Perry	22,350	0.17%
Edgar	18,576	0.14%		Piatt	16,729	0.13%
Edwards	6,721	0.05%		Pike	16,430	0.13%
Effingham	34,242	0.27%		Pope	4,470	0.03%
Fayette	22,140	0.17%		Pulaski	6,161	0.05%
Ford	14,081	0.11%		Putnam	6,006	0.05%
Franklin	39,561	0.31%		Randolph	33,476	0.26%
Fulton	37,069	0.29%		Richland	16,233	0.13%
Gallatin	5,589	0.04%		Rock Island	147,546	1.15%
Greene	13,886	0.11%		St. Clair	270,056	2.10%
Grundy	50,063	0.39%		Saline	24,913	0.19%
Hamilton	8,457	0.07%		Sangamon	197,465	1.54%
Hancock	19,104	0.15%		Schuyler	7,544	0.06%
Hardin	4,320	0.03%		Scott	5,355	0.04%
Henderson	7,331	0.06%		Shelby	22,363	0.17%
Henry	50,486	0.39%		Stark	5,994	0.05%
Iroquois	29,718	0.23%		Stephenson	47,711	0.37%
Jackson	60,218	0.47%		Tazewell	135,394	1.06%
Jasper	9,698	0.08%		Union	17,808	0.14%
Jefferson	38,827	0.30%		Vermilion	81,625	0.64%
Jersey	22,985	0.18%		Wabash	11,947	0.09%
Jo Daviess	22,678	0.18%		Warren	17,707	0.14%
Johnson	12,582	0.10%		Washington	14,716	0.11%
Kane	515,269	4.02%		Wayne	16,760	0.13%
Kankakee	113,449	0.88%		White	14,665	0.11%
Kendall	114,736	0.89%		Whiteside	58,498	0.46%
Knox	52,919	0.41%		Will	677,560	5.28%
Lake	703,462	5.48%		Williamson	66,357	0.52%
LaSalle	113,924	0.89%		Winnebago	295,266	2.30%
Lawrence	16,833	0.13%		Woodford	38,664	0.30%

Source: census.gov.

TABLE 14

Illinois Population by County - 2000 Census						
County	Number	% of Total		County	Number	% of Total
Adams	68,277	0.55%		Lee	36,062	0.29%
Alexander	9,590	0.08%		Livingston	39,678	0.32%
Bond	17,633	0.14%		Logan	31,183	0.25%
Boone	41,786	0.34%		McDonough	32,913	0.27%
Brown	6,950	0.06%		McHenry	260,077	2.09%
Bureau	35,503	0.29%		McLean	150,433	1.21%
Calhoun	5,084	0.04%		Macon	114,706	0.92%
Carroll	16,674	0.13%		Macoupin	49,019	0.39%
Cass	13,695	0.11%		Madison	258,941	2.08%
Champaign	179,669	1.45%		Marion	41,691	0.34%
Christian	35,372	0.28%		Marshall	13,180	0.11%
Clark	17,008	0.14%		Mason	16,038	0.13%
Clay	14,560	0.12%		Massac	15,161	0.12%
Clinton	35,535	0.29%		Menard	12,486	0.10%
Coles	53,196	0.43%		Mercer	16,957	0.14%
Cook	5,376,741	43.29%		Monroe	27,619	0.22%
Crawford	20,452	0.16%		Montgomery	30,652	0.25%
Cumberland	11,253	0.09%		Morgan	36,616	0.29%
DeKalb	88,969	0.72%		Moultrie	14,287	0.12%
De Witt	16,798	0.14%		Ogle	51,032	0.41%
Douglas	19,922	0.16%		Peoria	183,433	1.48%
DuPage	904,161	7.28%		Perry	23,094	0.19%
Edgar	19,704	0.16%		Piatt	16,365	0.13%
Edwards	6,971	0.06%		Pike	17,384	0.14%
Effingham	34,264	0.28%		Pope	4,413	0.04%
Fayette	21,802	0.18%		Pulaski	7,348	0.06%
Ford	14,241	0.11%		Putnam	6,086	0.05%
Franklin	39,018	0.31%		Randolph	33,893	0.27%
Fulton	38,250	0.31%		Richland	16,149	0.13%
Gallatin	6,445	0.05%		Rock Island	149,374	1.20%
Greene	14,761	0.12%		St. Clair	256,082	2.06%
Grundy	37,535	0.30%		Saline	26,733	0.22%
Hamilton	8,621	0.07%		Sangamon	188,951	1.52%
Hancock	20,121	0.16%		Schuyler	7,189	0.06%
Hardin	4,800	0.04%		Scott	5,537	0.04%
Henderson	8,213	0.07%		Shelby	22,893	0.18%
Henry	51,020	0.41%		Stark	6,332	0.05%
Iroquois	31,334	0.25%		Stephenson	48,979	0.39%
Jackson	59,612	0.48%		Tazewell	128,485	1.03%
Jasper	10,117	0.08%		Union	18,293	0.15%
Jefferson	40,045	0.32%		Vermilion	83,919	0.68%
Jersey	21,668	0.17%		Wabash	12,937	0.10%
Jo Daviess	22,289	0.18%		Warren	18,735	0.15%
Johnson	12,878	0.10%		Washington	15,148	0.12%
Kane	404,119	3.25%		Wayne	17,151	0.14%
Kankakee	103,833	0.84%		White	15,371	0.12%
Kendall	54,544	0.44%		Whiteside	60,653	0.49%
Knox	55,836	0.45%		Will	502,266	4.04%
Lake	644,356	5.19%		Williamson	61,296	0.49%
LaSalle	111,509	0.90%		Winnebago	278,418	2.24%
Lawrence	15,452	0.12%		Woodford	35,469	0.29%

Source: census.gov.

TABLE 15

Illinois Population Change from 2010 to 2020 by County						
County	# Change	% Change		County	# Change	% Change
Adams	(1,366)	-2.0%		Lee	(1,886)	-5.2%
Alexander	(2,998)	-36.4%		Livingston	(3,135)	-8.0%
Bond	(1,043)	-5.9%		Logan	(2,318)	-7.6%
Boone	(717)	-1.3%		McDonough	(5,374)	-16.5%
Brown	(693)	-10.0%		McHenry	1,469	0.5%
Bureau	(1,734)	-5.0%		McLean	1,382	0.8%
Calhoun	(652)	-12.8%		Macon	(6,770)	-6.1%
Carroll	315	2.0%		Macoupin	(2,798)	-5.9%
Cass	(600)	-4.4%		Madison	(3,423)	-1.3%
Champaign	4,784	2.4%		Marion	(1,708)	-4.3%
Christian	(768)	-2.2%		Marshall	(898)	-7.1%
Clark	(880)	-5.4%		Mason	(1,580)	-10.8%
Clay	(527)	-3.8%		Massac	(1,260)	-8.2%
Clinton	(863)	-2.3%		Menard	(408)	-3.2%
Coles	(7,010)	-13.0%		Mercer	(735)	-4.5%
Cook	80,866	1.6%		Monroe	2,005	6.1%
Crawford	(1,138)	-5.7%		Montgomery	(1,816)	-6.0%
Cumberland	(598)	-5.4%		Morgan	(2,632)	-7.4%
DeKalb	(4,740)	-4.5%		Moultrie	(320)	-2.2%
De Witt	(1,045)	-6.3%		Ogle	(1,709)	-3.2%
Douglas	(240)	-1.2%		Peoria	(4,664)	-2.5%
DuPage	15,953	1.7%		Perry	(1,405)	-6.3%
Edgar	(1,710)	-9.2%		Piatt	(56)	-0.3%
Edwards	(476)	-7.1%		Pike	(1,691)	-10.3%
Effingham	426	1.2%		Pope	(707)	-15.8%
Fayette	(652)	-2.9%		Pulaski	(968)	-15.7%
Ford	(547)	-3.9%		Putnam	(369)	-6.1%
Franklin	(1,757)	-4.4%		Randolph	(3,313)	-9.9%
Fulton	(3,460)	-9.3%		Richland	(420)	-2.6%
Gallatin	(643)	-11.5%		Rock Island	(2,874)	-1.9%
Greene	(1,901)	-13.7%		St. Clair	(12,656)	-4.7%
Grundy	2,470	4.9%		Saline	(1,145)	-4.6%
Hamilton	(464)	-5.5%		Sangamon	(1,122)	-0.6%
Hancock	(1,484)	-7.8%		Schuyler	(642)	-8.5%
Hardin	(671)	-15.5%		Scott	(406)	-7.6%
Henderson	(944)	-12.9%		Shelby	(1,373)	-6.1%
Henry	(1,202)	-2.4%		Stark	(594)	-9.9%
Iroquois	(2,641)	-8.9%		Stephenson	(3,081)	-6.5%
Jackson	(7,244)	-12.0%		Tazewell	(4,051)	-3.0%
Jasper	(411)	-4.2%		Union	(564)	-3.2%
Jefferson	(1,714)	-4.4%		Vermilion	(7,437)	-9.1%
Jersey	(1,473)	-6.4%		Wabash	(586)	-4.9%
Jo Daviess	(643)	-2.8%		Warren	(872)	-4.9%
Johnson	726	5.8%		Washington	(955)	-6.5%
Kane	1,253	0.2%		Wayne	(581)	-3.5%
Kankakee	(5,947)	-5.2%		White	(788)	-5.4%
Kendall	17,133	14.9%		Whiteside	(2,807)	-4.8%
Knox	(2,952)	-5.6%		Will	18,795	2.8%
Lake	10,880	1.5%		Williamson	796	1.2%
LaSalle	(4,266)	-3.7%		Winnebago	(9,916)	-3.4%
Lawrence	(1,553)	-9.2%		Woodford	(197)	-0.5%

Source: census.gov.

TABLE 16

County	One Race							Two or More Races %	County	One Race							Two or More Races %
	% White	% Black or African American	% American Indian and Alaska Native	% Asian	% Native Hawaiian and Other Pacific Islanders	% Some Other Race	% Two or More Races %			% White	% Black or African American	% American Indian and Alaska Native	% Asian	% Native Hawaiian and Other Pacific Islanders	% Some Other Race	% Two or More Races %	
Adams	91.4%	3.5%	0.2%	0.8%	0.0%	0.7%	3.5%	Lee	85.5%	6.2%	0.3%	0.8%	0.0%	2.8%	4.3%		
Alexander	64.8%	29.8%	0.5%	0.1%	0.0%	0.4%	4.3%	Livingston	90.3%	3.5%	0.2%	0.5%	0.0%	2.2%	340.0%		
Bond	86.1%	7.4%	0.3%	0.7%	0.1%	2.4%	3.0%	Logan	88.1%	6.2%	0.2%	0.7%	0.0%	1.8%	3.0%		
Boone	76.2%	2.1%	0.9%	1.3%	0.0%	10.2%	9.3%	McDonough	86.6%	5.5%	0.2%	2.2%	0.0%	3.7%	3.7%		
Brown	73.6%	20.2%	0.0%	0.1%	0.0%	4.0%	2.0%	McHenry	82.4%	1.2%	0.5%	2.9%	0.0%	5.6%	7.4%		
Bureau	90.1%	0.8%	0.4%	0.9%	0.0%	2.8%	4.8%	McLean	79.7%	8.2%	0.2%	4.5%	0.0%	2.3%	4.9%		
Calhoun	96.0%	0.2%	0.1%	0.2%	0.0%	0.3%	3.1%	Macon	76.7%	16.5%	0.2%	1.4%	0.0%	1.0%	4.1%		
Carroll	90.0%	5.3%	0.5%	0.3%	0.0%	1.0%	2.9%	Macoupin	94.3%	0.8%	0.3%	0.4%	0.0%	3.3%	3.9%		
Cass	76.8%	4.5%	0.9%	1.0%	0.3%	10.6%	5.9%	Madison	83.4%	8.7%	0.3%	1.1%	0.0%	1.3%	5.2%		
Champaign	65.0%	12.3%	0.3%	13.2%	0.0%	3.4%	5.8%	Marion	90.3%	3.5%	0.3%	1.1%	0.0%	0.6%	4.2%		
Christian	92.7%	1.2%	0.2%	0.5%	0.0%	2.7%	2.7%	Marshall	94.4%	0.6%	0.2%	0.5%	0.0%	0.8%	3.5%		
Clark	96.1%	0.3%	0.2%	0.4%	0.0%	0.6%	2.4%	Masson	95.6%	0.3%	0.2%	0.3%	0.0%	0.3%	3.3%		
Clay	94.8%	0.2%	0.3%	0.6%	0.0%	0.7%	3.3%	Massac	88.1%	6.1%	0.3%	0.9%	0.0%	0.9%	4.3%		
Clinton	90.1%	3.6%	0.3%	0.5%	0.0%	1.9%	3.6%	McHard	95.3%	0.5%	0.5%	0.4%	0.0%	0.3%	3.4%		
Coles	88.0%	4.4%	0.2%	1.5%	0.1%	2.1%	3.0%	Mercer	94.9%	0.5%	0.2%	0.2%	0.0%	0.6%	3.6%		
Cook	46.9%	22.5%	1.0%	8.1%	0.0%	12.3%	9.2%	Monroe	94.7%	0.3%	0.2%	0.5%	0.0%	0.5%	3.8%		
Crawford	91.0%	3.9%	0.3%	0.5%	0.0%	1.6%	2.7%	Montgomery	91.4%	3.9%	0.2%	0.5%	0.0%	1.0%	3.0%		
Cumberland	96.2%	0.2%	0.1%	0.3%	0.0%	0.3%	2.9%	Morgan	88.8%	5.8%	0.2%	0.8%	0.0%	1.0%	3.3%		
DeKalb	76.8%	8.0%	0.5%	2.6%	0.0%	5.1%	7.1%	Moultrie	95.7%	0.5%	0.2%	0.4%	0.0%	0.5%	2.7%		
De Witt	94.7%	0.5%	0.2%	0.3%	0.1%	1.2%	3.0%	Ogle	88.2%	1.0%	0.5%	0.5%	0.0%	4.0%	5.8%		
Douglas	91.3%	0.3%	0.3%	0.5%	0.0%	3.7%	3.7%	Peoria	71.8%	16.5%	0.3%	4.1%	0.0%	2.5%	4.8%		
DuPage	68.9%	4.6%	0.5%	12.6%	0.0%	6.1%	7.2%	Peery	85.1%	9.3%	0.2%	0.6%	0.0%	2.0%	2.8%		
Edwards	95.6%	0.5%	0.2%	0.3%	0.0%	0.6%	2.8%	Piatt	95.1%	0.4%	0.4%	0.4%	0.0%	0.5%	3.4%		
Effingham	96.8%	0.3%	0.2%	0.7%	0.2%	0.2%	1.9%	Pike	95.3%	0.5%	0.3%	0.3%	0.1%	0.6%	3.0%		
Egypt	95.1%	0.4%	0.2%	0.4%	0.0%	0.8%	2.8%	Pope	94.1%	1.4%	0.2%	0.3%	0.0%	0.4%	3.5%		
Fayette	91.5%	4.5%	0.5%	0.3%	0.0%	1.0%	2.2%	Putnam	63.3%	28.3%	0.8%	0.3%	0.0%	3.6%	3.8%		
Ford	93.5%	0.2%	0.2%	0.5%	0.0%	1.3%	3.9%	Putnam	93.3%	0.4%	0.3%	0.4%	0.1%	1.9%	3.8%		
Franklin	94.7%	0.4%	0.3%	0.3%	0.0%	0.5%	3.8%	Randolph	85.3%	8.7%	0.2%	0.2%	0.0%	2.1%	3.3%		
Fulton	91.5%	3.9%	0.2%	0.2%	0.0%	1.5%	2.6%	Richard	95.1%	0.5%	0.2%	0.8%	0.0%	0.5%	2.9%		
Gallatin	95.6%	0.6%	0.1%	0.3%	0.0%	0.3%	3.0%	Rock Island	95.1%	10.0%	0.5%	2.5%	0.0%	4.8%	6.9%		
Greene	96.4%	0.2%	0.1%	0.2%	0.0%	0.3%	2.8%	St. Clair	75.3%	62.7%	0.3%	1.5%	0.1%	1.8%	5.2%		
Granby	87.8%	1.5%	0.4%	1.0%	0.0%	3.1%	6.2%	Saline	91.7%	2.7%	0.4%	0.6%	0.0%	0.6%	4.0%		
Hamilton	95.8%	0.5%	0.3%	0.1%	0.0%	0.2%	3.2%	Sangamon	80.7%	11.6%	0.3%	2.2%	0.0%	0.8%	4.3%		
Hancock	95.7%	0.4%	0.3%	0.3%	0.0%	0.7%	2.7%	Schuyler	91.0%	4.0%	0.4%	0.4%	0.0%	0.5%	3.6%		
Hardin	95.0%	0.3%	0.0%	0.5%	0.1%	0.2%	3.9%	Scott	96.8%	0.0%	0.0%	0.3%	0.0%	0.2%	2.6%		
Henderson	95.9%	0.4%	0.2%	0.2%	0.1%	0.5%	2.8%	Shelby	96.8%	0.3%	0.1%	0.9%	0.0%	0.4%	2.0%		
Henry	91.0%	2.0%	0.2%	0.4%	0.0%	2.3%	4.1%	Stark	95.8%	0.2%	0.2%	0.4%	0.0%	0.6%	2.8%		
Irroquois	91.2%	0.7%	0.2%	0.4%	0.0%	2.5%	4.9%	Stephenson	94.3%	8.8%	0.3%	0.7%	0.0%	1.7%	2.8%		
Jackson	74.5%	12.9%	0.4%	4.3%	0.0%	2.6%	5.3%	Tazewell	93.3%	1.2%	0.3%	0.8%	0.0%	3.7%	4.3%		
Jasper	96.9%	0.2%	0.3%	0.2%	0.0%	0.3%	2.1%	Union	91.1%	1.5%	0.5%	0.3%	0.1%	1.4%	5.0%		
Jefferson	86.6%	7.2%	0.3%	1.0%	0.0%	1.0%	4.0%	Vermilion	80.5%	12.4%	0.3%	0.9%	0.0%	2.1%	3.8%		
Jersey	94.6%	0.7%	0.1%	0.4%	0.0%	0.4%	3.9%	Walsh	93.5%	0.4%	0.4%	2.6%	0.1%	2.9%	3.8%		
Jo Daviess	94.9%	0.4%	0.3%	0.4%	0.0%	1.3%	2.7%	Warren	84.8%	3.5%	0.4%	1.6%	0.1%	4.9%	4.7%		
Johnson	80.4%	12.9%	0.3%	0.2%	0.0%	3.5%	2.7%	Washington	95.6%	0.6%	0.1%	0.5%	0.0%	0.5%	2.7%		
Kane	63.4%	5.1%	1.2%	4.3%	0.0%	14.8%	11.1%	Wayne	96.1%	0.4%	0.3%	0.3%	0.0%	0.6%	2.4%		
Kankakee	74.1%	13.7%	0.4%	1.0%	0.0%	5.1%	5.7%	White	87.7%	0.6%	0.2%	0.4%	0.0%	3.4%	3.4%		
Kendall	71.2%	7.3%	0.6%	3.6%	0.0%	7.9%	9.5%	Whiteside	87.7%	1.3%	0.4%	0.4%	0.0%	3.7%	6.2%		
Knox	83.5%	8.4%	0.3%	0.8%	0.0%	2.3%	4.8%	Will	66.4%	11.4%	0.5%	6.0%	0.0%	7.2%	8.4%		
LaSalle	64.1%	6.6%	0.9%	8.1%	0.1%	11.2%	9.0%	Williamson	89.2%	4.1%	0.5%	1.1%	0.0%	0.7%	4.4%		
Lasalle	87.5%	2.4%	0.4%	0.8%	0.0%	3.3%	5.7%	Winnebago	71.4%	12.2%	0.6%	2.8%	0.0%	5.9%	7.1%		
Lavrence	82.8%	11.2%	0.1%	0.4%	0.1%	2.7%	2.7%	Woodford	95.0%	0.6%	0.1%	0.6%	0.0%	0.5%	3.1%		

Source: census.gov

TABLE 17

Illinois Hispanic or Latino Demographics by County - 2010 to 2020									
County	Hispanic or Latino			2020 Not	County	Hispanic or Latino			2020 Not
	2010	2020	Change	Hispanic or		2010	2020	Change	Hispanic or
ILLINOIS	15.8%	18.2%	2.4%	81.8%	ILLINOIS	15.8%	18.2%	2.4%	81.8%
Adams	1.2%	2.0%	0.8%	98.0%	Lee	5.0%	6.8%	1.8%	93.2%
Alexander	1.9%	1.6%	-0.3%	98.4%	Livingston	4.9%	5.2%	0.3%	94.8%
Bond	3.1%	3.6%	0.5%	96.4%	Logan	2.9%	2.9%	0.0%	97.1%
Boone	20.2%	24.1%	3.9%	75.9%	McDonough	2.7%	3.5%	0.8%	96.5%
Brown	5.8%	4.5%	-1.3%	95.5%	McHenry	11.4%	15.1%	3.7%	84.9%
Bureau	7.7%	9.3%	1.6%	90.7%	McLean	4.4%	6.2%	1.8%	93.8%
Calhoun	0.8%	1.4%	0.6%	98.6%	Macon	1.9%	2.6%	0.7%	97.4%
Carroll	2.8%	4.8%	2.0%	95.2%	Macoupin	90.0%	1.3%	-88.7%	98.7%
Cass	17.8%	21.4%	3.6%	78.6%	Madison	2.7%	4.1%	1.4%	95.9%
Champaign	5.3%	8.1%	2.8%	91.9%	Marion	1.4%	1.9%	0.5%	98.1%
Christian	1.4%	3.2%	1.8%	96.8%	Marshall	2.5%	2.8%	0.3%	97.2%
Clark	1.1%	1.6%	0.5%	98.4%	Mason	0.8%	1.4%	0.6%	98.6%
Clay	1.1%	1.7%	0.6%	98.3%	Massac	1.9%	2.4%	0.5%	97.6%
Clinton	2.8%	3.8%	1.0%	96.2%	Menard	1.0%	1.3%	0.3%	98.7%
Coles	2.1%	3.8%	1.7%	96.2%	Mercer	1.9%	3.0%	1.1%	97.0%
Cook	24.0%	26.2%	2.2%	73.8%	Monroe	1.4%	1.8%	0.4%	98.2%
Crawford	1.8%	2.4%	0.6%	97.6%	Montgomery	1.5%	2.1%	0.6%	97.9%
Cumberland	0.7%	1.1%	0.4%	98.9%	Morgan	2.0%	2.5%	0.5%	97.5%
DeKalb	10.1%	13.5%	3.4%	86.5%	Moultrie	0.9%	1.3%	0.4%	98.7%
De Witt	2.1%	3.3%	1.2%	96.7%	Ogle	8.9%	11.2%	2.3%	88.8%
Douglas	6.1%	7.9%	1.8%	92.1%	Peoria	3.8%	5.5%	1.7%	94.5%
DuPage	13.3%	15.5%	2.2%	84.5%	Perry	2.7%	3.4%	0.7%	96.6%
Edgar	1.0%	1.3%	0.3%	98.7%	Piatt	1.0%	1.5%	0.5%	98.5%
Edwards	0.9%	1.0%	0.1%	99.0%	Pike	1.0%	1.8%	0.8%	98.2%
Effingham	1.7%	2.5%	0.8%	97.5%	Pope	1.4%	1.9%	0.5%	98.1%
Fayette	1.4%	3.1%	1.7%	96.9%	Pulaski	1.6%	3.9%	2.3%	96.1%
Ford	2.1%	4.1%	2.0%	95.9%	Putnam	4.2%	6.2%	2.0%	93.8%
Franklin	1.2%	1.7%	0.5%	98.3%	Randolph	2.6%	3.4%	0.8%	96.6%
Fulton	2.4%	2.2%	-0.2%	97.8%	Richland	2.3%	1.7%	-0.6%	98.3%
Gallatin	1.2%	1.1%	-0.1%	98.9%	Rock Island	11.6%	13.7%	2.1%	86.3%
Greene	0.8%	0.9%	0.1%	99.1%	St. Clair	3.3%	4.9%	1.6%	95.1%
Grundy	8.2%	10.9%	2.7%	89.1%	Saline	1.4%	2.0%	0.6%	98.0%
Hamilton	1.2%	1.2%	0.0%	98.8%	Sangamon	1.8%	2.7%	0.9%	97.3%
Hancock	1.0%	1.8%	0.8%	98.2%	Schuyler	1.2%	2.2%	1.0%	97.8%
Hardin	1.3%	1.8%	0.5%	98.2%	Scott	0.8%	1.0%	0.2%	99.0%
Henderson	1.1%	1.8%	0.7%	98.2%	Shelby	0.8%	1.0%	0.2%	99.0%
Henry	4.8%	6.4%	1.6%	93.6%	Stark	1.0%	2.4%	1.4%	97.6%
Iroquois	5.3%	7.7%	2.4%	92.3%	Stephenson	2.9%	5.1%	2.2%	94.9%
Jackson	4.0%	5.4%	1.4%	94.6%	Tazewell	1.9%	2.4%	0.5%	97.6%
Jasper	0.8%	0.9%	0.1%	99.1%	Union	4.8%	5.0%	0.2%	95.0%
Jefferson	2.1%	2.4%	0.3%	97.6%	Vermilion	4.2%	5.1%	0.9%	94.9%
Jersey	1.0%	1.5%	0.5%	98.5%	Wabash	1.3%	1.6%	0.3%	98.4%
Jo Daviess	2.7%	3.9%	1.2%	96.1%	Warren	8.4%	10.6%	2.2%	89.4%
Johnson	3.0%	4.1%	1.1%	95.9%	Washington	1.3%	1.6%	0.3%	98.4%
Kane	30.7%	32.8%	2.1%	67.2%	Wayne	1.1%	1.1%	0.0%	98.9%
Kankakee	9.0%	11.6%	2.6%	88.4%	White	1.1%	1.4%	0.3%	98.6%
Kendall	15.6%	20.6%	5.0%	79.4%	Whiteside	11.0%	12.8%	1.8%	87.2%
Knox	4.8%	6.1%	1.3%	93.9%	Will	15.6%	18.8%	3.2%	81.2%
Lake	19.9%	24.1%	4.2%	75.9%	Williamson	2.0%	2.6%	0.6%	97.4%
LaSalle	8.0%	10.4%	2.4%	89.6%	Winnebago	10.9%	14.4%	3.5%	85.6%
Lawrence	3.3%	3.4%	0.1%	96.6%	Woodford	1.4%	1.9%	0.5%	98.1%

Source: census.gov.

TABLE 18

Illinois Average Household Size by County - 2020 Census			
County	Average	County	Average
ILLINOIS	2.54	ILLINOIS	2.54
Adams	2.60	Lee	2.26
Alexander	2.36	Livingston	2.33
Bond	2.32	Logan	2.27
Boone	2.82	McDonough	2.32
Brown	2.27	McHenry	2.70
Bureau	2.35	McLean	2.47
Calhoun	2.80	Macon	2.31
Carroll	2.12	Macoupin	2.39
Cass	2.40	Madison	2.39
Champaign	2.34	Marion	2.28
Christian	2.22	Marshall	2.29
Clark	2.29	Mason	2.24
Clay	2.29	Massac	2.44
Clinton	2.42	Menard	2.33
Coles	2.25	Mercer	2.36
Cook	2.55	Monroe	2.52
Crawford	2.13	Montgomery	2.20
Cumberland	2.52	Morgan	2.28
DeKalb	2.30	Moultrie	2.35
De Witt	2.59	Ogle	2.39
Douglas	2.55	Peoria	2.39
DuPage	2.65	Perry	2.17
Edgar	2.16	Piatt	2.42
Edwards	2.32	Pike	2.42
Effingham	2.43	Pope	2.44
Fayette	2.51	Pulaski	2.62
Ford	2.19	Putnam	2.35
Franklin	2.36	Randolph	2.33
Fulton	2.29	Richland	2.35
Gallatin	2.19	Rock Island	2.28
Greene	2.55	St. Clair	2.46
Grundy	2.51	Saline	2.29
Hamilton	2.39	Sangamon	2.28
Hancock	2.33	Schuyler	2.23
Hardin	2.50	Scott	2.50
Henderson	2.21	Shelby	2.34
Henry	2.42	Stark	2.30
Iroquois	2.28	Stephenson	2.22
Jackson	2.21	Tazewell	2.41
Jasper	2.50	Union	2.40
Jefferson	2.41	Vermilion	2.39
Jersey	2.55	Wabash	2.36
Jo Daviess	2.11	Warren	2.33
Johnson	2.43	Washington	2.28
Kane	2.89	Wayne	2.28
Kankakee	2.59	White	2.20
Kendall	3.07	Whiteside	2.36
Knox	2.24	Will	2.93
Lake	2.74	Williamson	2.32
LaSalle	2.34	Winnebago	2.41
Lawrence	2.18	Woodford	2.55

Source: census.gov.

TABLE 20

Illinois Household Type by County - 2020 Census											
County	Total	Nonfamily Households		Family Households		County	Total	Nonfamily Households		Family Households	
		Number	%	Number	%			Number	%	Number	%
ILLINOIS	4,884,061	1,767,646	36.2%	3,116,415	63.8%	ILLINOIS	4,884,061	1,767,646	36.2%	3,116,415	63.8%
Adams	27,199	9,801	36.0%	17,398	64.0%	Lee	13,634	5,587	41.0%	8,047	59.0%
Alexander	2,252	917	40.7%	1,335	59.3%	Livingston	14,366	4,899	34.1%	9,467	65.9%
Bond	6,359	2,326	36.6%	4,033	63.4%	Logan	10,958	3,991	36.4%	6,967	63.6%
Boone	18,799	5,219	27.8%	13,580	72.2%	McDonough	11,573	5,818	50.3%	5,755	49.7%
Brown	2,090	863	41.3%	1,227	58.7%	McHenry	113,269	28,712	25.3%	84,557	74.7%
Bureau	13,801	4,641	33.6%	9,160	66.4%	McLean	66,225	26,560	40.1%	39,665	59.9%
Calhoun	1,661	447	26.9%	1,214	73.1%	Macon	43,810	17,634	40.3%	26,176	59.7%
Carroll	6,511	2,526	38.8%	3,985	61.2%	Macoupin	18,577	6,049	32.6%	12,528	67.4%
Cass	5,068	1,770	34.9%	3,298	65.1%	Madison	108,429	37,655	34.7%	70,774	65.3%
Champaign	83,059	40,441	48.7%	42,618	51.3%	Marion	16,126	6,272	38.9%	9,854	61.1%
Christian	13,977	5,765	41.2%	8,212	58.8%	Marshall	4,922	1,766	35.9%	3,156	64.1%
Clark	6,726	1,795	26.7%	4,931	73.3%	Mason	5,917	2,102	35.5%	3,815	64.5%
Clay	5,607	1,992	35.5%	3,615	64.5%	Massac	5,619	1,808	32.2%	3,811	67.8%
Clinton	14,596	4,952	33.9%	9,644	66.1%	Menard	5,211	1,397	26.8%	3,814	73.2%
Coles	20,972	9,069	43.2%	11,903	56.8%	Mercer	6,477	2,076	32.1%	4,401	67.9%
Cook	1,991,474	808,049	40.6%	1,183,425	59.4%	Monroe	13,576	3,327	24.5%	10,249	75.5%
Crawford	7,704	2,667	34.6%	5,037	65.4%	Montgomery	11,619	4,455	38.3%	7,164	61.7%
Cumberland	4,229	1,355	32.0%	2,874	68.0%	Morgan	13,560	5,312	39.2%	8,248	60.8%
DeKalb	38,616	15,622	40.5%	22,994	59.5%	Moultrie	6,043	1,975	32.7%	4,068	67.3%
De Witt	6,732	2,579	38.3%	4,153	61.7%	Ogle	20,967	7,151	34.1%	13,816	65.9%
Douglas	7,600	2,459	32.4%	5,141	67.6%	Peoria	73,519	29,953	40.7%	43,566	59.3%
DuPage	344,314	103,553	30.1%	240,761	69.9%	Perry	8,504	2,824	33.2%	5,680	66.8%
Edgar	7,851	2,700	34.4%	5,151	65.6%	Piatt	6,755	1,983	29.4%	4,772	70.6%
Edwards	2,756	977	35.4%	1,779	64.6%	Pike	6,258	2,342	37.4%	3,916	62.6%
Effingham	13,856	4,665	33.7%	9,191	66.3%	Pope	1,618	584	36.1%	1,034	63.9%
Fayette	7,918	2,620	33.1%	5,298	66.9%	Pulaski	2,050	827	40.3%	1,223	59.7%
Ford	5,824	2,249	38.6%	3,575	61.4%	Putnam	2,435	767	31.5%	1,668	68.5%
Franklin	16,207	6,284	38.8%	9,923	61.2%	Randolph	12,047	4,172	34.6%	7,875	65.4%
Fulton	14,072	5,422	38.5%	8,650	61.5%	Richland	6,527	2,246	34.4%	4,281	65.6%
Gallatin	2,274	818	36.0%	1,456	64.0%	Rock Island	60,607	23,325	38.5%	37,282	61.5%
Greene	4,984	1,664	33.4%	3,320	66.6%	St. Clair	104,631	38,373	36.7%	66,258	63.3%
Grundy	20,071	5,821	29.0%	14,250	71.0%	Saline	10,140	3,519	34.7%	6,621	65.3%
Hamilton	3,366	1,011	30.0%	2,355	70.0%	Sangamon	84,093	34,025	40.5%	50,068	59.5%
Hancock	7,542	2,657	35.2%	4,885	64.8%	Schuyler	2,730	1,173	43.0%	1,557	57.0%
Hardin	1,515	566	37.4%	949	62.6%	Scott	1,973	546	27.7%	1,427	72.3%
Henderson	3,028	990	32.7%	2,038	67.3%	Shelby	9,158	2,907	31.7%	6,251	68.3%
Henry	19,996	6,385	31.9%	13,611	68.1%	Stark	2,304	799	34.7%	1,505	65.3%
Iroquois	11,845	4,042	34.1%	7,803	65.9%	Stephenson	19,741	7,072	35.8%	12,669	64.2%
Jackson	24,208	11,839	48.9%	12,369	51.1%	Tazewell	53,997	18,620	34.5%	35,377	65.5%
Jasper	3,791	1,124	29.6%	2,667	70.4%	Union	6,813	2,372	34.8%	4,441	65.2%
Jefferson	14,792	4,894	33.1%	9,898	66.9%	Vermilion	31,013	11,972	38.6%	19,041	61.4%
Jersey	8,158	2,719	33.3%	5,439	66.7%	Wabash	4,780	1,708	35.7%	3,072	64.3%
Jo Daviess	10,069	3,540	35.2%	6,529	64.8%	Warren	6,789	2,257	33.2%	4,532	66.8%
Johnson	4,174	1,138	27.3%	3,036	72.7%	Washington	6,020	1,936	32.2%	4,084	67.8%
Kane	181,845	48,828	26.9%	133,017	73.1%	Wayne	7,114	2,501	35.2%	4,613	64.8%
Kankakee	40,297	13,803	34.3%	26,494	65.7%	White	6,040	2,141	35.4%	3,899	64.6%
Kendall	41,398	8,667	20.9%	32,731	79.1%	Whiteside	23,225	8,408	36.2%	14,817	63.8%
Knox	20,428	9,008	44.1%	11,420	55.9%	Will	232,395	58,039	25.0%	174,356	75.0%
Lake	248,684	68,351	27.5%	180,333	72.5%	Williamson	27,937	10,503	37.6%	17,434	62.4%
LaSalle	45,089	15,745	34.9%	29,344	65.1%	Winnebago	115,768	41,523	35.9%	74,245	64.1%
Lawrence	6,166	2,280	37.0%	3,886	63.0%	Woodford	14,652	4,068	27.8%	10,584	72.2%

Source: census.gov.

TABLE 22

Income Statistics by Illinois County 2020 American Community Survey 5-Year Estimates									
County	Median Household Income in the past 12 months (in 2020 inflation-adjusted \$)		Per-Capita Income in the past 12 months (in 2020 inflation-adjusted \$)		County	Median Household Income in the past 12 months (in 2020 inflation-adjusted \$)		Per-Capita Income in the past 12 months (in 2020 inflation-adjusted \$)	
	Estimate	Ranking	Estimate	Ranking		Estimate	Ranking	Estimate	Ranking
Adams	\$55,052	56	\$31,035	32	Lee	\$59,986	29	\$29,343	53
Alexander	\$34,709	102	\$20,450	102	Livingston	\$58,676	38	\$29,646	49
Bond	\$53,568	66	\$27,274	79	Logan	\$58,122	39	\$29,377	52
Boone	\$70,396	12	\$32,659	22	McDonough	\$43,591	97	\$25,219	92
Brown	\$60,694	26	\$22,835	99	McHenry	\$90,014	5	\$40,545	4
Bureau	\$55,549	52	\$29,700	48	McLean	\$68,037	13	\$34,496	15
Calhoun	\$66,602	17	\$30,282	41	Macon	\$53,725	65	\$30,681	36
Carroll	\$52,813	69	\$30,090	43	Macoupin	\$56,264	45	\$28,726	63
Cass	\$53,899	62	\$26,747	84	Madison	\$64,045	21	\$33,599	17
Champaign	\$53,936	61	\$31,254	30	Marion	\$49,925	86	\$26,853	83
Christian	\$52,120	72	\$28,959	60	Marshall	\$57,303	42	\$29,533	50
Clark	\$59,481	32	\$30,649	37	Mason	\$50,883	81	\$30,144	42
Clay	\$52,167	71	\$29,950	44	Massac	\$51,195	79	\$24,624	95
Clinton	\$67,179	16	\$33,231	18	Menard	\$77,550	8	\$39,221	6
Coles	\$46,411	92	\$28,495	65	Mercer	\$57,182	43	\$30,493	38
Cook	\$67,886	14	\$39,239	5	Monroe	\$89,648	6	\$43,435	3
Crawford	\$50,968	80	\$27,211	80	Montgomery	\$54,886	58	\$27,510	76
Cumberland	\$59,271	35	\$29,426	51	Morgan	\$53,002	68	\$29,047	58
DeKalb	\$62,353	24	\$29,780	47	Moultrie	\$64,033	22	\$30,734	35
De Witt	\$57,727	40	\$30,910	34	Ogle	\$63,643	23	\$31,974	25
Douglas	\$59,620	31	\$28,603	64	Peoria	\$55,729	51	\$32,371	24
DuPage	\$94,930	2	\$47,501	1	Perry	\$51,616	77	\$24,442	96
Edgar	\$48,543	88	\$27,775	74	Piatt	\$73,668	11	\$34,674	14
Edwards	\$53,801	64	\$27,847	72	Pike	\$46,605	91	\$26,185	90
Effingham	\$59,932	30	\$32,901	20	Pope	\$43,140	98	\$22,690	100
Fayette	\$45,634	93	\$23,920	97	Pulaski	\$64,694	101	\$20,898	101
Ford	\$50,582	83	\$29,288	54	Putnam	\$55,319	19	\$32,902	19
Franklin	\$43,671	96	\$24,642	94	Randolph	\$55,032	54	\$27,206	81
Fulton	\$52,243	70	\$29,850	46	Richland	\$55,980	57	\$28,457	66
Gallatin	\$43,092	99	\$31,693	27	Rock Island	\$57,473	46	\$30,380	40
Greene	\$51,746	74	\$27,105	82	St. Clair	\$43,928	41	\$31,511	29
Grundy	\$75,767	9	\$35,483	12	Saline	\$61,743	95	\$27,421	78
Hamilton	\$55,977	47	\$28,046	69	Sangamon	\$51,376	25	\$35,549	11
Hancock	\$55,818	49	\$30,405	39	Schuyler	\$59,352	78	\$26,479	88
Hardin	\$50,847	82	\$27,720	75	Scott	\$59,134	34	\$29,120	56
Henderson	\$55,759	50	\$31,645	28	Shelby	\$53,828	37	\$28,234	68
Henry	\$60,000	28	\$31,763	26	Stark	\$50,466	63	\$29,007	59
Iroquois	\$54,445	59	\$28,790	62	Stephenson	\$66,220	84	\$28,893	61
Jackson	\$39,689	100	\$26,656	86	Tazewell	\$51,655	18	\$33,854	16
Jasper	\$55,911	48	\$27,877	71	Union	\$46,842	76	\$27,778	73
Jefferson	\$51,662	75	\$26,742	85	Vermilion	\$48,878	90	\$25,484	91
Jersey	\$67,845	15	\$32,544	23	Wabash	\$54,291	87	\$29,252	55
Jo Daviess	\$59,223	36	\$34,974	13	Warren	\$64,390	60	\$27,899	70
Johnson	\$55,363	53	\$23,548	98	Washington	\$50,205	20	\$32,687	21
Kane	\$83,374	7	\$37,548	9	Wayne	\$48,303	85	\$26,502	87
Kankakee	\$59,370	33	\$28,445	67	White	\$57,172	89	\$27,449	77
Kendall	\$96,854	1	\$36,504	10	Whiteside	\$90,800	44	\$31,185	31
Knox	\$44,464	94	\$24,804	93	Will	\$52,076	4	\$37,967	7
Lake	\$92,654	3	\$47,223	2	Williamson	\$55,310	73	\$29,092	57
LaSalle	\$60,069	27	\$31,020	33	Winnebago	\$74,777	55	\$29,894	45
Lawrence	\$53,087	67	\$26,233	89	Woodford	\$68,428	10	\$37,751	8

Source: U.S. Census Bureau

TABLE 23

Poverty Status by Illinois County									
County	Total Population	Income Below Poverty Level		Poverty Percentage Ranking	County	Total Population	Income Below Poverty Level		Poverty Percentage Ranking
ILLINOIS	12,418,504	1,488,809	12.0%						
Adams	64,256	8,139	12.7%	49	Lee	30,901	3,712	12.0%	41
Alexander	5,885	1,581	26.9%	102	Livingston	33,571	4,335	12.9%	52
Bond	14,730	2,005	13.6%	62	Logan	24,912	2,515	10.1%	26
Boone	52,743	4,350	8.2%	14	McDonough	26,824	5,492	20.5%	98
Brown	4,713	507	10.8%	31	McHenry	304,687	19,949	6.5%	6
Bureau	32,318	3,970	12.3%	46	McLean	163,631	24,942	15.2%	77
Calhoun	4,667	423	9.1%	20	Macon	101,042	15,336	15.2%	76
Carroll	13,733	1,507	11.0%	34	Macoupin	44,290	6,075	13.7%	65
Cass	12,174	1,838	15.1%	74	Madison	258,701	32,152	12.4%	47
Champaign	194,472	37,232	19.1%	95	Marion	36,375	6,020	16.5%	85
Christian	31,002	3,299	10.6%	29	Marshall	11,084	1,205	10.9%	33
Clark	15,325	1,332	8.7%	18	Mason	13,285	2,059	15.5%	79
Clay	12,959	2,175	16.8%	87	Massac	13,687	2,343	17.1%	88
Clinton	35,420	2,771	7.8%	12	Menard	12,107	923	7.6%	11
Coles	47,407	9,697	20.5%	97	Mercer	15,245	1,540	10.1%	27
Cook	5,082,060	695,076	13.7%	64	Monroe	34,122	1,061	3.1%	1
Crawford	16,453	1,893	11.5%	40	Montgomery	25,633	3,989	15.6%	80
Cumberland	10,616	1,206	11.4%	37	Morgan	30,932	4,043	13.1%	56
DeKalb	99,964	16,000	16.0%	83	Moultrie	14,264	1,282	9.0%	19
De Witt	15,426	1,594	10.3%	28	Ogle	49,978	4,811	9.6%	23
Douglas	19,187	2,060	10.7%	30	Peoria	175,976	27,525	15.6%	81
DuPage	913,236	56,256	6.2%	5	Perry	18,340	3,202	17.5%	90
Edgar	16,959	1,908	11.3%	36	Piatt	16,348	936	5.7%	3
Edwards	6,308	762	12.1%	43	Pike	15,042	2,137	14.2%	68
Effingham	33,574	3,754	11.2%	35	Pope	4,019	859	21.4%	99
Fayette	19,808	3,206	16.2%	84	Pulaski	5,335	1,039	19.5%	96
Ford	12,736	1,642	12.9%	50	Putnam	5,702	546	9.6%	22
Franklin	37,901	7,205	19.0%	94	Randolph	28,251	3,568	12.6%	48
Fulton	32,082	4,672	14.6%	72	Richland	15,401	2,022	13.1%	57
Gallatin	4,973	1,119	22.5%	100	Rock Island	137,890	19,803	14.4%	69
Greene	12,677	1,642	13.0%	53	St. Clair	256,679	37,001	14.4%	71
Grundy	50,158	3,537	7.1%	8	Saline	23,179	4,249	18.3%	91
Hamilton	8,071	1,090	13.5%	60	Sangamon	191,976	26,859	14.0%	67
Hancock	17,605	2,296	13.0%	55	Schuyler	6,802	1,183	17.4%	89
Hardin	3,799	504	13.3%	59	Scott	4,912	601	12.2%	45
Henderson	6,676	575	8.6%	17	Shelby	21,425	2,095	9.8%	25
Henry	48,162	5,217	10.8%	32	Stark	5,256	756	14.4%	70
Iroquois	26,746	3,071	11.5%	39	Stephenson	43,902	6,558	14.9%	73
Jackson	53,728	12,898	24.0%	101	Tazewell	129,697	11,144	8.6%	16
Jasper	9,408	1,151	12.2%	44	Union	16,584	3,046	18.4%	92
Jefferson	35,527	5,391	15.2%	75	Vermilion	73,487	13,957	19.0%	93
Jersey	20,763	1,688	8.1%	13	Wabash	11,260	1,353	12.0%	42
Jo Daviess	21,241	2,031	9.6%	21	Warren	15,844	1,817	11.5%	38
Johnson	10,076	1,300	12.9%	51	Washington	13,754	1,031	7.5%	9
Kane	525,065	44,469	8.5%	15	Wayne	16,240	2,147	13.2%	58
Kankakee	105,504	13,721	13.0%	54	White	13,223	2,021	15.3%	78
Kendall	127,192	5,536	4.4%	2	Whiteside	54,340	5,299	9.8%	24
Knox	45,810	7,648	16.7%	86	Will	679,320	46,353	6.8%	7
Lake	682,049	51,620	7.6%	10	Williamson	64,469	8,972	13.9%	66
LaSalle	105,323	14,322	13.6%	61	Winnebago	279,100	44,036	15.8%	82
Lawrence	13,445	1,834	13.6%	63	Woodford	37,368	2,190	5.9%	4

Source: U.S. Census Bureau. 2020 American Community Survey 5-Year Estimates

IV. ILLINOIS POPULATION BY MUNICIPALITY

The following section shows the population for each municipality in the State according to the 2020 census. Also shown, are each municipality's 2010 Census populations and how these figures compare to the new 2020 Census Data. Below are summary tables identifying the top twenty Illinois municipalities by 2020 population and by number and percent change in population from 2010 to 2020.

TABLE 24

Top Twenty Illinois Municipalities by 2020 Population					
Ranking	Municipality	2020 Population	Ranking	Municipality	2020 Population
1	Chicago city	2,699,347	11	Cicero town	81,471
2	Aurora city	199,326	12	Bloomington city	77,725
3	Naperville city	147,734	13	Arlington Heights village	75,071
4	Rockford city	147,441	14	Bolingbrook village	74,319
5	Joliet city	147,323	15	Evanston city	73,979
6	Springfield city	115,075	16	Schaumburg village	73,392
7	Peoria city	112,644	17	Decatur city	71,857
8	Elgin city	112,062	18	Palatine village	67,875
9	Champaign city	88,288	19	Skokie village	63,300
10	Waukegan city	87,157	20	Orland Park village	58,380

Top Twenty Illinois Municipalities by Percent Change in Population from 2010 to 2020					
Ranking	Municipality	Percent Change	Ranking	Municipality	Percent Change
1	Thomson village	172.9%	11	Enfield village	33.2%
2	Pingree Grove village	128.7%	12	Manhattan village	33.1%
3	Volo village	109.0%	13	Rentchler CDP	32.4%
4	Annapolis CDP	92.7%	14	Oak Run CDP	31.8%
5	Kaskaskia village	50.0%	15	Mahomet village	30.0%
6	Symerton village	47.1%	16	Oakbrook Terrace city	28.9%
7	Dieterich village	44.2%	17	Yorkville city	27.3%
8	The Galena Territory CDP	41.8%	18	Greenwood village	27.1%
9	Hampshire village	37.8%	19	Chatham village	25.0%
10	Exeter village	33.8%	20	St. Jacob village	23.7%

Top Twenty Illinois Municipalities by Change in Population from 2010 to 2020					
Ranking	Municipality	# Change in Population	Ranking	Municipality	# Change in Population
1	Chicago city	50,790	11	O'Fallon city	4,008
2	Naperville city	7,687	12	Evanston city	3,624
3	Champaign city	7,247	13	Huntley village	3,449
4	Elgin city	6,609	14	Volo village	3,193
5	Pingree Grove village	5,833	15	Skokie village	3,040
6	Plainfield village	5,181	16	Joliet city	2,929
7	Yorkville city	4,612	17	Chatham village	2,877
8	Schaumburg village	4,496	18	New Lenox village	2,820
9	Oswego village	4,230	19	Oak Park village	2,705
10	Glenview village	4,013	20	Mount Prospect village	2,685

TABLE 25

2020 Census Population Compared to 2010: Illinois Municipalities/CDPs				
(Municipalities: Cities, Villages, Towns; CDPs: Census Designated Place)				
Municipality/CDP	2010 Census Total Population	2020 Census Total Population	2010-2020 Change	2010-2020 % Change
Abingdon city	3,319	2,951	-368	-11.1%
Adair CDP	210	212	2	1.0%
Adams CDP	x	75	N/A	N/A
Addieville village	252	259	7	2.8%
Addison village	36,942	35,702	-1,240	-3.4%
Adeline village	85	78	-7	-8.2%
Albany village	891	864	-27	-3.0%
Albers village	1,190	1,121	-69	-5.8%
Albion city	1,988	1,971	-17	-0.9%
Alden CDP	x	113	N/A	N/A
Aledo city	3,640	3,633	-7	-0.2%
Alexander CDP	x	155	N/A	N/A
Alexis village	831	793	-38	-4.6%
Algonquin village	30,046	29,700	-346	-1.2%
Alhambra village	681	622	-59	-8.7%
Allendale village	475	458	-17	-3.6%
Allenville village	148	132	-16	-10.8%
Allerton village	291	262	-29	-10.0%
Alma village	320	318	-2	-0.6%
Alorton village	2,002	1,566	-436	-21.8%
Alpha village	671	675	4	0.6%
Alsey village	227	195	-32	-14.1%
Alsip village	19,277	19,063	-214	-1.1%
Altamont city	2,319	2,216	-103	-4.4%
Alto Pass village	391	319	-72	-18.4%
Alton city	27,865	25,676	-2,189	-7.9%
Altona village	531	463	-68	-12.8%
Alvan village	270	233	-37	-13.7%
Amboy city	2,500	2,278	-222	-8.9%
Anchor village	146	163	17	11.6%
Andalusia village	1,178	1,184	6	0.5%
Andover village	578	555	-23	-4.0%
Andres CDP	x	43	N/A	N/A
Anna city	4,442	4,303	-139	-3.1%
Annapolis CDP	55	106	51	92.7%
Annawan town	878	884	6	0.7%
Antioch village	14,430	14,622	192	1.3%
Apple Canyon Lake CDP	558	574	16	2.9%
Apple River village	366	347	-19	-5.2%
Arbury Hills CDP	x	1,132	N/A	N/A
Arcola city	2,916	2,927	11	0.4%
Arenzville village	409	367	-42	-10.3%
Argenta village	947	913	-34	-3.6%
Argyle CDP	x	332	N/A	N/A
Arlington Heights village	75,101	77,676	2,575	3.4%
Arlington village	193	169	-24	-12.4%
Armington village	343	310	-33	-9.6%
Aroma Park village	743	664	-79	-10.6%

Municipality/CDP	2010 Census Total Population	2020 Census Total Population	2010-2020 Change	2010-2020 % Change
Arrowsmith village	294	276	-18	-6.1%
Arthur village	2,288	2,231	-57	-2.5%
Ashkum village	761	750	-11	-1.4%
Ashland village	1,333	1,218	-115	-8.6%
Ashley city	536	462	-74	-13.8%
Ashmore village	785	637	-148	-18.9%
Ashton village	972	967	-5	-0.5%
Assumption city	1,168	1,155	-13	-1.1%
Astoria town	1,141	929	-212	-18.6%
Athens city	1,988	1,977	-11	-0.6%
Atkinson town	972	965	-7	-0.7%
Atlanta city	1,692	1,669	-23	-1.4%
Atwood village	1,224	1,116	-108	-8.8%
Auburn city	4,771	4,574	-197	-4.1%
Augusta village	587	553	-34	-5.8%
Aurora city	197,899	180,542	-17,357	-8.8%
Ava city	654	553	-101	-15.4%
Aviston village	1,945	2,340	395	20.3%
Avon village	799	704	-95	-11.9%
Baileyville CDP	x	187	N/A	N/A
Baldwin village	373	314	-59	-15.8%
Banner village	189	169	-20	-10.6%
Bannockburn village	1,583	1,013	-570	-36.0%
Bardolph village	251	210	-41	-16.3%
Barrington Hills village	4,209	4,114	-95	-2.3%
Barrington village	10,327	10,722	395	3.8%
Barry city	1,318	1,303	-15	-1.1%
Barstow CDP	x	89	N/A	N/A
Bartelso village	595	635	40	6.7%
Bartlett village	41,208	41,105	-103	-0.2%
Bartonville village	6,471	5,945	-526	-8.1%
Basco village	98	80	-18	-18.4%
Batavia city	26,045	26,098	53	0.2%
Batchtown village	214	170	-44	-20.6%
Bath village	333	279	-54	-16.2%
Bay View Gardens village	378	354	-24	-6.3%
Baylis village	205	172	-33	-16.1%
Beach Park village	13,638	14,249	611	4.5%
Beardstown city	6,123	5,951	-172	-2.8%
Beason CDP	189	147	-42	-22.2%
Beaverville village	362	306	-56	-15.5%
Beckemeyer village	1,040	923	-117	-11.3%
Bedford Park village	580	602	22	3.8%
Beecher City village	463	428	-35	-7.6%
Beecher village	4,359	4,713	354	8.1%
Belgium village	404	358	-46	-11.4%
Belknap village	104	88	-16	-15.4%
Belle Prairie City town	54	49	-5	-9.3%
Belle Rive village	361	309	-52	-14.4%

Municipality/CDP	2010 Census Total Population	2020 Census Total Population	2010-2020 Change	2010-2020 % Change
Belleville city	44,478	42,404	-2,074	-4.7%
Bellevue village	1,978	1,878	-100	-5.1%
Bellflower village	357	346	-11	-3.1%
Bellmont village	276	247	-29	-10.5%
Bellwood village	19,071	18,789	-282	-1.5%
Belvidere city	25,585	25,339	-246	-1.0%
Bement village	1,730	1,484	-246	-14.2%
Benld city	1,556	1,464	-92	-5.9%
Bensenville village	18,352	18,813	461	2.5%
Benson village	423	412	-11	-2.6%
Bentley town	35	30	-5	-14.3%
Benton city	7,087	6,709	-378	-5.3%
Berkeley village	5,209	5,338	129	2.5%
Berlin village	180	141	-39	-21.7%
Berwyn city	56,657	57,250	593	1.0%
Bethalto village	9,521	9,310	-211	-2.2%
Bethany village	1,352	1,255	-97	-7.2%
Beverly CDP	x	72	N/A	N/A
Big Foot Prairie CDP	x	65	N/A	N/A
Big Rock village	1,126	1,104	-22	-2.0%
Biggsville village	304	300	-4	-1.3%
Bingham village	83	60	-23	-27.7%
Bishop Hill village	128	113	-15	-11.7%
Bismarck village	579	582	3	0.5%
Blairsville CDP	x	243	N/A	N/A
Blandinsville village	651	569	-82	-12.6%
Bloomfield CDP	x	32	N/A	N/A
Bloomington village	22,018	22,382	364	1.7%
Bloomington city	76,610	78,680	2,070	2.7%
Blue Island city	23,706	22,558	-1,148	-4.8%
Blue Mound village	1,158	1,133	-25	-2.2%
Bluffs village	715	618	-97	-13.6%
Bluford village	688	630	-58	-8.4%
Bolingbrook village	73,366	73,922	556	0.8%
Bondville village	443	388	-55	-12.4%
Bone Gap village	246	181	-65	-26.4%
Bonfield village	382	351	-31	-8.1%
Bonnie Brae CDP	x	1,287	N/A	N/A
Bonnie village	397	374	-23	-5.8%
Boody CDP	276	232	-44	-15.9%
Boulder Hill CDP	8,108	8,394	286	3.5%
Bourbonnais village	18,631	18,164	-467	-2.5%
Bowen village	494	464	-30	-6.1%
Braceville village	793	724	-69	-8.7%
Bradford village	768	676	-92	-12.0%
Bradley village	15,895	15,419	-476	-3.0%
Braidwood city	6,191	6,194	3	0.0%
Breese city	4,442	4,641	199	4.5%
Bridgeport city	1,886	1,800	-86	-4.6%

Municipality/CDP	2010 Census Total Population	2020 Census Total Population	2010-2020 Change	2010-2020 % Change
Bridgeview village	16,446	17,027	581	3.5%
Brighton village	2,254	2,221	-33	-1.5%
Brimfield village	868	778	-90	-10.4%
Broadlands village	349	316	-33	-9.5%
Broadview village	7,932	7,998	66	0.8%
Broadwell village	145	136	-9	-6.2%
Brocton village	322	273	-49	-15.2%
Brookfield village	18,978	19,476	498	2.6%
Brooklyn village	749	649	-100	-13.4%
Brookport city	984	725	-259	-26.3%
Broughton village	194	185	-9	-4.6%
Browning village	137	117	-20	-14.6%
Browns village	134	139	5	3.7%
Brownstown village	759	690	-69	-9.1%
Brussels village	141	116	-25	-17.7%
Bryant village	220	168	-52	-23.6%
Buckingham village	300	244	-56	-18.7%
Buckley village	600	495	-105	-17.5%
Buckner village	462	409	-53	-11.5%
Buda village	538	482	-56	-10.4%
Buffalo Grove village	41,496	43,212	1,716	4.1%
Buffalo Prairie CDP	x	64	N/A	N/A
Buffalo village	503	447	-56	-11.1%
Bull Valley village	1,077	1,128	51	4.7%
Bulpitt village	222	212	-10	-4.5%
Buncombe village	203	207	4	2.0%
Bunker Hill city	1,774	1,630	-144	-8.1%
Burbank city	28,925	29,439	514	1.8%
Bureau Junction village	322	281	-41	-12.7%
Burlington village	618	535	-83	-13.4%
Burnham village	4,206	4,046	-160	-3.8%
Burnt Prairie village	52	36	-16	-30.8%
Burr Ridge village	10,559	11,192	633	6.0%
Burton CDP	x	103	N/A	N/A
Burtons Bridge CDP	x	226	N/A	N/A
Bush village	275	241	-34	-12.4%
Bushnell city	3,117	2,718	-399	-12.8%
Butler village	180	164	-16	-8.9%
Byron city	3,753	3,784	31	0.8%
Cabery village	266	231	-35	-13.2%
Cable CDP	x	117	N/A	N/A
Cahokia village	15,241	12,096	-3,145	-20.6%
Cairo city	2,831	1,733	-1,098	-38.8%
Caledonia village	197	183	-14	-7.1%
Calhoun village	172	164	-8	-4.7%
Calumet City city	37,042	36,033	-1,009	-2.7%
Calumet Park village	7,835	7,025	-810	-10.3%
Camargo village	445	452	7	1.6%
Cambria village	1,228	1,505	277	22.6%

<u>Municipality/CDP</u>	2010 Census Total Population	2020 Census Total Population	2010-2020 Change	2010-2020 % Change
Cambridge village	2,160	2,086	-74	-3.4%
Camden village	86	62	-24	-27.9%
Cameron CDP	x	188	N/A	N/A
Camp Point village	1,132	1,121	-11	-1.0%
Campbell Hill village	336	309	-27	-8.0%
Campbell's Island CDP	x	275	N/A	N/A
Campton Hills village	11,131	10,885	-246	-2.2%
Campus village	166	149	-17	-10.2%
Candlewick Lake CDP	x	5,115	N/A	N/A
Canton city	14,704	13,242	-1,462	-9.9%
Cantrall village	139	144	5	3.6%
Capron village	1,376	1,395	19	1.4%
Carbon Cliff village	2,134	1,846	-288	-13.5%
Carbon Hill village	345	372	27	7.8%
Carbondale city	25,902	21,857	-4,045	-15.6%
Carlinville city	5,917	5,710	-207	-3.5%
Carlock village	552	548	-4	-0.7%
Carlyle city	3,281	3,253	-28	-0.9%
Carman CDP	x	67	N/A	N/A
Carmi city	5,240	4,865	-375	-7.2%
Carol Stream village	39,711	39,854	143	0.4%
Carpentersville village	37,691	37,983	292	0.8%
Carrier Mills village	1,653	1,672	19	1.1%
Carrollton city	2,484	2,485	1	0.0%
Cartersville city	5,496	5,848	352	6.4%
Carthage city	2,605	2,490	-115	-4.4%
Cary village	18,271	17,826	-445	-2.4%
Casey city	2,769	2,404	-365	-13.2%
Caseyville village	4,245	4,400	155	3.7%
Catlin village	2,040	1,983	-57	-2.8%
Cave-In-Rock village	318	228	-90	-28.3%
Cedar Point village	277	266	-11	-4.0%
Cedarville village	741	663	-78	-10.5%
Central City village	1,172	1,098	-74	-6.3%
Centralia city	13,032	12,182	-850	-6.5%
Centreville city	5,309	4,232	-1,077	-20.3%
Cerro Gordo village	1,403	1,316	-87	-6.2%
Chadwick village	551	481	-70	-12.7%
Champaign city	81,055	88,302	7,247	8.9%
Chandlerville village	553	527	-26	-4.7%
Channahon village	12,560	13,383	823	6.6%
Channel Lake CDP	1,664	1,581	-83	-5.0%
Chapin village	512	475	-37	-7.2%
Charleston city	21,838	17,286	-4,552	-20.8%
Chatham village	11,500	14,377	2,877	25.0%
Chatsworth town	1,205	1,185	-20	-1.7%
Chebance village	1,062	1,044	-18	-1.7%
Chemung CDP	308	276	-32	-10.4%
Chenoa city	1,785	1,720	-65	-3.6%

Municipality/CDP	2010 Census Total Population	2020 Census Total Population	2010-2020 Change	2010-2020 % Change
Cherry Valley village	3,162	2,905	-257	-8.1%
Cherry village	482	435	-47	-9.8%
Chester city	8,586	6,814	-1,772	-20.6%
Chesterfield village	188	170	-18	-9.6%
Chestnut CDP	246	220	-26	-10.6%
Chicago city	2,695,598	2,746,388	50,790	1.9%
Chicago Heights city	30,276	27,480	-2,796	-9.2%
Chicago Ridge village	14,305	14,433	128	0.9%
Chillicothe city	6,097	6,128	31	0.5%
Chrisman city	1,343	1,312	-31	-2.3%
Christopher city	2,382	2,697	315	13.2%
Cicero town	83,891	85,268	1,377	1.6%
Cisco village	261	254	-7	-2.7%
Cisne village	672	634	-38	-5.7%
Cissna Park village	846	817	-29	-3.4%
Claremont village	176	161	-15	-8.5%
Clarendon Hills village	8,427	8,702	275	3.3%
Clay City village	959	847	-112	-11.7%
Clayton village	709	639	-70	-9.9%
Clear Lake village	229	203	-26	-11.4%
Cleveland village	188	163	-25	-13.3%
Clifton village	1,468	1,352	-116	-7.9%
Clinton city	7,225	7,004	-221	-3.1%
Coal City village	5,587	5,705	118	2.1%
Coal Valley village	3,743	3,873	130	3.5%
Coalton village	304	317	13	4.3%
Coatsburg village	147	150	3	2.0%
Cobden village	1,157	1,074	-83	-7.2%
Coffeen city	685	647	-38	-5.5%
Colchester city	1,401	1,108	-293	-20.9%
Coleta village	164	167	3	1.8%
Colfax village	1,061	996	-65	-6.1%
Collinsville city	25,579	24,366	-1,213	-4.7%
Colona city	5,099	5,045	-54	-1.1%
Colp village	225	168	-57	-25.3%
Columbia city	9,707	10,999	1,292	13.3%
Columbus village	99	114	15	15.2%
Como CDP	567	528	-39	-6.9%
Compton village	303	274	-29	-9.6%
Concord village	167	150	-17	-10.2%
Congerville village	474	497	23	4.9%
Cooksville village	182	157	-25	-13.7%
Coral CDP	x	16	N/A	N/A
Cordova village	672	671	-1	-0.1%
Cornell village	467	446	-21	-4.5%
Cornland CDP	93	89	-4	-4.3%
Cortland town	4,270	4,398	128	3.0%
Coulterville village	945	834	-111	-11.7%
Country Club Hills city	16,541	16,775	234	1.4%

<u>Municipality/CDP</u>	2010 Census Total Population	2020 Census Total Population	2010-2020 Change	2010-2020 % Change
Countryside city	5,895	6,420	525	8.9%
Cowden village	629	515	-114	-18.1%
Coyne Center CDP	827	877	50	6.0%
Crab Orchard CDP	333	356	23	6.9%
Crainville village	1,254	1,443	189	15.1%
Creal Springs city	543	505	-38	-7.0%
Crescent City village	615	552	-63	-10.2%
Crest Hill city	20,837	20,459	-378	-1.8%
Creston village	662	627	-35	-5.3%
Crestwood village	10,950	10,826	-124	-1.1%
Crete village	8,259	8,465	206	2.5%
Creve Coeur village	5,451	4,934	-517	-9.5%
Crossville village	745	623	-122	-16.4%
Crystal Lake city	40,743	40,269	-474	-1.2%
Crystal Lawns CDP	1,872	1,830	-42	-2.2%
Cuba city	1,294	1,184	-110	-8.5%
Cullom village	555	520	-35	-6.3%
Curran village	212	213	1	0.5%
Custer Park CDP	x	112	N/A	N/A
Cutler village	441	361	-80	-18.1%
Cypress village	234	217	-17	-7.3%
Dahlgren village	525	504	-21	-4.0%
Dakota village	506	500	-6	-1.2%
Dallas City city	945	805	-140	-14.8%
Dalton City village	544	454	-90	-16.5%
Dalzell village	717	663	-54	-7.5%
Damiansville village	491	564	73	14.9%
Dana village	159	162	3	1.9%
Danforth village	604	594	-10	-1.7%
Danvers village	1,154	1,089	-65	-5.6%
Danville city	33,027	29,204	-3,823	-11.6%
Darien city	22,086	22,011	-75	-0.3%
Darmstadt CDP	68	49	-19	-27.9%
Davis Junction village	2,373	2,512	139	5.9%
Davis village	677	589	-88	-13.0%
Dawson village	509	519	10	2.0%
Dayton CDP	537	528	-9	-1.7%
De Land village	446	447	1	0.2%
De Pue village	1,838	1,633	-205	-11.2%
De Soto village	1,590	1,407	-183	-11.5%
De Witt village	184	160	-24	-13.0%
Decatur city	76,122	70,522	-5,600	-7.4%
Deer Creek village	704	667	-37	-5.3%
Deer Grove village	48	38	-10	-20.8%
Deer Park village	3,200	3,681	481	15.0%
Deerfield village	18,225	19,196	971	5.3%
DeKalb city	43,862	40,290	-3,572	-8.1%
Delavan city	1,689	1,568	-121	-7.2%
Des Plaines city	58,364	60,675	2,311	4.0%

Municipality/CDP	2010 Census Total Population	2020 Census Total Population	2010-2020 Change	2010-2020 % Change
Detroit village	83	76	-7	-8.4%
Dewey CDP	x	105	N/A	N/A
Diamond village	2,527	2,640	113	4.5%
Dieterich village	617	890	273	44.2%
Divernon village	1,172	1,139	-33	-2.8%
Dix village	461	469	8	1.7%
Dixmoor village	3,644	2,973	-671	-18.4%
Dixon city	15,733	15,274	-459	-2.9%
Dolton village	23,153	21,426	-1,727	-7.5%
Dongola village	726	661	-65	-9.0%
Donnellson village	210	153	-57	-27.1%
Donovan village	304	251	-53	-17.4%
Dorchester village	151	133	-18	-11.9%
Dover village	168	135	-33	-19.6%
Dowell village	408	368	-40	-9.8%
Downers Grove village	47,833	50,247	2,414	5.0%
Downs village	1,005	1,201	196	19.5%
Du Bois village	205	175	-30	-14.6%
Du Quoin city	6,109	5,827	-282	-4.6%
Dundas CDP	x	146	N/A	N/A
Dunfermline village	300	262	-38	-12.7%
Dunlap village	1,386	1,603	217	15.7%
Dupo village	4,138	3,996	-142	-3.4%
Durand village	1,443	1,390	-53	-3.7%
Dwight village	4,260	4,032	-228	-5.4%
Eagarville village	127	114	-13	-10.2%
Eagle Lake CDP	x	76	N/A	N/A
Earlville city	1,701	1,613	-88	-5.2%
East Alton village	6,301	5,786	-515	-8.2%
East Brooklyn village	106	80	-26	-24.5%
East Cape Girardeau village	385	289	-96	-24.9%
East Carondelet village	499	390	-109	-21.8%
East Dubuque city	1,704	1,505	-199	-11.7%
East Dundee village	2,860	3,152	292	10.2%
East Galesburg village	812	763	-49	-6.0%
East Gillespie village	270	269	-1	-0.4%
East Hazel Crest village	1,543	1,297	-246	-15.9%
East Lynn CDP	x	90	N/A	N/A
East Moline city	21,302	21,374	72	0.3%
East Peoria city	23,402	22,484	-918	-3.9%
East St. Louis city	27,006	18,469	-8,537	-31.6%
Easton village	321	312	-9	-2.8%
Eddyville village	101	99	-2	-2.0%
Edgewood village	440	398	-42	-9.5%
Edgington CDP	x	391	N/A	N/A
Edinburg village	1,078	1,085	7	0.6%
Edwardsville city	24,293	26,808	2,515	10.4%
Effingham city	12,328	12,252	-76	-0.6%
El Dara village	78	63	-15	-19.2%

Municipality/CDP	2010 Census Total Population	2020 Census Total Population	2010-2020 Change	2010-2020 % Change
El Paso city	2,810	2,756	-54	-1.9%
Elburn village	5,602	6,175	573	10.2%
Eldorado city	4,122	3,743	-379	-9.2%
Eldred village	201	149	-52	-25.9%
Elgin city	108,188	114,797	6,609	6.1%
Eliza CDP	x	25	N/A	N/A
Elizabeth village	761	694	-67	-8.8%
Elizabethtown village	299	220	-79	-26.4%
Elk Grove Village village	33,127	32,812	-315	-1.0%
Elkhart village	405	450	45	11.1%
Elkville village	928	838	-90	-9.7%
Elliott village	295	274	-21	-7.1%
Ellis Grove village	363	328	-35	-9.6%
Ellisville village	96	87	-9	-9.4%
Ellsworth village	195	184	-11	-5.6%
Elmhurst city	44,121	45,786	1,665	3.8%
Elmwood city	2,097	2,058	-39	-1.9%
Elmwood Park village	24,883	24,521	-362	-1.5%
Elsah village	673	519	-154	-22.9%
Elvaston village	165	147	-18	-10.9%
Elwin CDP	x	119	N/A	N/A
Elwood village	2,279	2,229	-50	-2.2%
Emden village	485	467	-18	-3.7%
Emington village	117	101	-16	-13.7%
Energy village	1,146	974	-172	-15.0%
Enfield village	596	794	198	33.2%
Equality village	595	539	-56	-9.4%
Erie village	1,602	1,518	-84	-5.2%
Essex village	802	841	39	4.9%
Eureka city	5,295	5,227	-68	-1.3%
Evanston city	74,486	78,110	3,624	4.9%
Evansville village	701	547	-154	-22.0%
Evergreen Park village	19,852	19,943	91	0.5%
Ewing village	307	300	-7	-2.3%
Exeter village	65	87	22	33.8%
Fairbury city	3,757	3,633	-124	-3.3%
Fairfield city	5,154	4,883	-271	-5.3%
Fairmont CDP	2,459	2,389	-70	-2.8%
Fairmont City village	2,635	2,265	-370	-14.0%
Fairmount village	642	612	-30	-4.7%
Fairview Heights city	17,078	16,706	-372	-2.2%
Fairview village	522	426	-96	-18.4%
Fall Creek CDP	x	31	N/A	N/A
Farina village	518	540	22	4.2%
Farmer City city	2,037	1,828	-209	-10.3%
Farmersville village	724	689	-35	-4.8%
Farmington city	2,448	2,389	-59	-2.4%
Fayetteville village	366	302	-64	-17.5%
Ferris village	156	127	-29	-18.6%

<u>Municipality/CDP</u>	2010 Census Total Population	2020 Census Total Population	2010-2020 Change	2010-2020 % Change
Fidelity village	114	96	-18	-15.8%
Fieldon village	239	176	-63	-26.4%
Fillmore village	330	305	-25	-7.6%
Findlay village	683	664	-19	-2.8%
Fisher village	1,881	2,062	181	9.6%
Fithian village	485	488	3	0.6%
Flanagan village	1,110	1,010	-100	-9.0%
Flat Rock village	331	323	-8	-2.4%
Flora city	5,070	4,803	-267	-5.3%
Floraville CDP	53	49	-4	-7.5%
Florence village	38	17	-21	-55.3%
Flossmoor village	9,464	9,704	240	2.5%
Foosland village	101	75	-26	-25.7%
Ford Heights village	2,763	1,813	-950	-34.4%
Forest City village	246	222	-24	-9.8%
Forest Lake CDP	1,659	1,784	125	7.5%
Forest Park village	14,167	14,339	172	1.2%
Forest View village	698	792	94	13.5%
Forrest village	1,220	1,041	-179	-14.7%
Forreston village	1,446	1,435	-11	-0.8%
Forsyth village	3,490	3,734	244	7.0%
Fowler CDP	x	154	N/A	N/A
Fox Lake Hills CDP	2,591	2,684	93	3.6%
Fox Lake village	10,579	10,978	399	3.8%
Fox River Grove village	4,854	4,702	-152	-3.1%
Frankfort Square CDP	9,276	8,968	-308	-3.3%
Frankfort village	17,782	20,296	2,514	14.1%
Franklin Grove village	1,021	896	-125	-12.2%
Franklin Park village	18,333	18,467	134	0.7%
Franklin village	610	610	0	0.0%
Franklinville CDP	x	38	N/A	N/A
Freeburg village	4,354	4,582	228	5.2%
Freeman Spur village	287	268	-19	-6.6%
Freeport city	25,638	23,973	-1,665	-6.5%
Fulton city	3,481	3,647	166	4.8%
Fults village	26	28	2	7.7%
Gages Lake CDP	10,198	10,637	439	4.3%
Galatia village	933	827	-106	-11.4%
Galena city	3,429	3,308	-121	-3.5%
Galesburg city	32,195	30,052	-2,143	-6.7%
Galt CDP	x	193	N/A	N/A
Galva city	2,589	2,470	-119	-4.6%
Garden Prairie CDP	352	300	-52	-14.8%
Gardner village	1,463	1,366	-97	-6.6%
Garrett village	162	122	-40	-24.7%
Gays village	281	218	-63	-22.4%
Geneseo city	6,586	6,539	-47	-0.7%
Geneva city	21,495	21,393	-102	-0.5%
Genoa city	5,193	5,298	105	2.0%

<u>Municipality/CDP</u>	2010 Census Total Population	2020 Census Total Population	2010-2020 Change	2010-2020 % Change
Georgetown CDP	404	368	-36	-8.9%
Georgetown city	3,474	3,143	-331	-9.5%
German Valley village	463	433	-30	-6.5%
Germantown Hills village	3,438	3,412	-26	-0.8%
Germantown village	1,269	1,324	55	4.3%
Gibson City city	3,407	3,475	68	2.0%
Gifford village	975	911	-64	-6.6%
Gilberts village	6,879	8,366	1,487	21.6%
Gillespie city	3,319	3,168	-151	-4.5%
Gilman city	1,814	1,738	-76	-4.2%
Gilson CDP	190	156	-34	-17.9%
Girard city	2,103	1,785	-318	-15.1%
Gladstone village	281	234	-47	-16.7%
Glasford village	1,022	866	-156	-15.3%
Glasgow village	141	113	-28	-19.9%
Glen Carbon village	12,934	13,842	908	7.0%
Glen Ellyn village	27,450	28,846	1,396	5.1%
Glencoe village	8,723	8,849	126	1.4%
Glendale Heights village	34,208	33,176	-1,032	-3.0%
Glenview village	44,692	48,705	4,013	9.0%
Glenwood village	8,969	8,662	-307	-3.4%
Godfrey village	17,982	17,825	-157	-0.9%
Godley village	601	566	-35	-5.8%
Golconda city	668	630	-38	-5.7%
Golden Gate village	68	65	-3	-4.4%
Golden village	644	648	4	0.6%
Golf village	500	514	14	2.8%
Good Hope village	396	363	-33	-8.3%
Goodenow CDP	x	60	N/A	N/A
Goodfield village	860	936	76	8.8%
Goofy Ridge CDP	350	210	-140	-40.0%
Goreville village	1,049	1,068	19	1.8%
Gorham village	236	173	-63	-26.7%
Grafton city	674	626	-48	-7.1%
Grand Detour CDP	429	424	-5	-1.2%
Grand Ridge village	560	515	-45	-8.0%
Grand Tower city	605	479	-126	-20.8%
Grandview village	1,441	1,405	-36	-2.5%
Grandwood Park CDP	5,202	5,297	95	1.8%
Granite City city	29,849	27,549	-2,300	-7.7%
Grant Park village	1,331	1,294	-37	-2.8%
Grantfork village	337	341	4	1.2%
Granville village	1,427	1,359	-68	-4.8%
Grayslake village	20,957	21,248	291	1.4%
Grayville city	1,666	1,550	-116	-7.0%
Green Oaks village	3,866	4,128	262	6.8%
Green Valley village	709	630	-79	-11.1%
Greenfield city	1,071	1,059	-12	-1.1%
Greenup village	1,513	1,365	-148	-9.8%

<u>Municipality/CDP</u>	2010 Census Total Population	2020 Census Total Population	2010-2020 Change	2010-2020 % Change
Greenview village	778	745	-33	-4.2%
Greenville city	7,000	7,083	83	1.2%
Greenwood village	255	324	69	27.1%
Gridley village	1,432	1,456	24	1.7%
Griggsville city	1,226	1,097	-129	-10.5%
Gulf Port village	54	42	-12	-22.2%
Gurnee village	31,295	30,706	-589	-1.9%
Hainesville village	3,597	3,546	-51	-1.4%
Hamburg village	128	99	-29	-22.7%
Hamel village	816	929	113	13.8%
Hamilton city	2,951	2,753	-198	-6.7%
Hamlet CDP	x	21	N/A	N/A
Hammond village	509	508	-1	-0.2%
Hampshire village	5,563	7,667	2,104	37.8%
Hampton village	1,863	1,779	-84	-4.5%
Hanaford village	327	320	-7	-2.1%
Hanna City village	1,225	1,253	28	2.3%
Hanover Park village	37,973	37,470	-503	-1.3%
Hanover village	844	863	19	2.3%
Hardin village	967	801	-166	-17.2%
Harding CDP	x	133	N/A	N/A
Harmon village	120	111	-9	-7.5%
Harmony CDP	x	20	N/A	N/A
Harrisburg city	9,017	8,219	-798	-8.8%
Harrison CDP	970	895	-75	-7.7%
Harristown village	1,367	1,310	-57	-4.2%
Hartford village	1,429	1,185	-244	-17.1%
Hartland CDP	x	157	N/A	N/A
Hartsburg village	314	262	-52	-16.6%
Harvard city	9,447	9,469	22	0.2%
Harvel village	223	178	-45	-20.2%
Harvey city	25,282	20,324	-4,958	-19.6%
Harwood Heights village	8,612	9,065	453	5.3%
Havana city	3,301	2,963	-338	-10.2%
Hawthorn Woods village	7,663	9,062	1,399	18.3%
Hazel Crest village	14,100	13,382	-718	-5.1%
Hebron village	1,216	1,368	152	12.5%
Hecker village	481	429	-52	-10.8%
Henderson village	255	266	11	4.3%
Hennepin village	757	769	12	1.6%
Henning village	251	210	-41	-16.3%
Henry city	2,464	2,320	-144	-5.8%
Heritage Lake CDP	1,520	1,523	3	0.2%
Herrick village	436	358	-78	-17.9%
Herrin city	12,501	12,352	-149	-1.2%
Herscher village	1,591	1,521	-70	-4.4%
Hettick village	181	149	-32	-17.7%
Heyworth village	2,841	2,791	-50	-1.8%
Hickory Hills city	14,049	14,505	456	3.2%

Municipality/CDP	2010 Census Total Population	2020 Census Total Population	2010-2020 Change	2010-2020 % Change
Hidalgo village	106	111	5	4.7%
Highland city	9,919	9,991	72	0.7%
Highland Park city	29,763	30,176	413	1.4%
Highwood city	5,405	5,074	-331	-6.1%
Hillcrest village	1,326	1,224	-102	-7.7%
Hillsboro city	6,207	5,902	-305	-4.9%
Hillsdale village	523	417	-106	-20.3%
Hillside village	8,157	8,320	163	2.0%
Hillview village	193	94	-99	-51.3%
Hinckley village	2,070	2,006	-64	-3.1%
Hindsboro village	313	275	-38	-12.1%
Hinsdale village	16,816	17,395	579	3.4%
Hodgkins village	1,897	1,500	-397	-20.9%
Hoffman Estates village	51,895	52,530	635	1.2%
Hoffman village	508	439	-69	-13.6%
Holcomb CDP	x	149	N/A	N/A
Holiday Hills village	610	618	8	1.3%
Holiday Shores CDP	2,882	2,840	-42	-1.5%
Hollowayville village	84	36	-48	-57.1%
Homer Glen village	24,220	24,543	323	1.3%
Homer village	1,193	1,073	-120	-10.1%
Hometown city	4,349	4,343	-6	-0.1%
Homewood village	19,323	19,463	140	0.7%
Hoopston city	5,351	4,915	-436	-8.1%
Hoopole village	204	180	-24	-11.8%
Hopedale village	865	830	-35	-4.0%
Hopewell village	410	421	11	2.7%
Hopkins Park village	603	597	-6	-1.0%
Hoyleton village	531	520	-11	-2.1%
Hudson village	1,838	1,753	-85	-4.6%
Huey village	169	160	-9	-5.3%
Hull village	461	392	-69	-15.0%
Humboldt village	437	361	-76	-17.4%
Hume village	380	325	-55	-14.5%
Huntley village	24,291	27,740	3,449	14.2%
Hurst city	795	764	-31	-3.9%
Hutsonville village	554	478	-76	-13.7%
Illinois City CDP	x	159	N/A	N/A
Illiopoli village	891	846	-45	-5.1%
Ina village	2,338	1,641	-697	-29.8%
Indian Creek village	462	536	74	16.0%
Indian Head Park village	3,809	4,065	256	6.7%
Indianola village	276	227	-49	-17.8%
Industry village	478	399	-79	-16.5%
Ingalls Park CDP	3,314	3,460	146	4.4%
Inverness village	7,399	7,616	217	2.9%
Iola village	141	98	-43	-30.5%
Ipava village	470	447	-23	-4.9%
Iroquois village	154	133	-21	-13.6%

Municipality/CDP	2010 Census Total Population	2020 Census Total Population	2010-2020 Change	2010-2020 % Change
Irving village	495	373	-122	-24.6%
Irvington village	659	581	-78	-11.8%
Irwin village	74	68	-6	-8.1%
Island Lake village	8,080	8,051	-29	-0.4%
Itasca village	8,649	9,543	894	10.3%
Iuka village	489	512	23	4.7%
Ivesdale village	267	265	-2	-0.7%
Jacksonville city	19,446	17,616	-1,830	-9.4%
Janesville CDP	x	76	N/A	N/A
Jeffersonville village	367	355	-12	-3.3%
Jeisyville village	107	102	-5	-4.7%
Jerome village	1,656	1,692	36	2.2%
Jerseyville city	8,465	8,337	-128	-1.5%
Jewett village	223	196	-27	-12.1%
Johnsburg village	6,337	6,355	18	0.3%
Johnsonville village	77	72	-5	-6.5%
Johnston City city	3,543	3,384	-159	-4.5%
Joliet city	147,433	150,362	2,929	2.0%
Jonesboro city	1,821	1,711	-110	-6.0%
Joppa village	360	350	-10	-2.8%
Joslin CDP	x	85	N/A	N/A
Joy village	417	372	-45	-10.8%
Junction City village	482	527	45	9.3%
Junction village	129	56	-73	-56.6%
Justice village	12,926	12,600	-326	-2.5%
Kampsville village	328	310	-18	-5.5%
Kane village	438	296	-142	-32.4%
Kaneville village	484	452	-32	-6.6%
Kangley village	251	235	-16	-6.4%
Kankakee city	27,537	24,052	-3,485	-12.7%
Kansas village	787	670	-117	-14.9%
Kappa village	227	229	2	0.9%
Karnak village	499	430	-69	-13.8%
Kaskaskia village	14	21	7	50.0%
Keenes village	83	50	-33	-39.8%
Keensburg village	210	174	-36	-17.1%
Keithsburg city	609	550	-59	-9.7%
Kell village	219	173	-46	-21.0%
Kempton village	231	176	-55	-23.8%
Kenilworth village	2,513	2,514	1	0.0%
Kenney village	326	311	-15	-4.6%
Kewanee city	12,916	12,509	-407	-3.2%
Keyesport village	421	406	-15	-3.6%
Kilbourne village	302	265	-37	-12.3%
Kildeer village	3,968	4,091	123	3.1%
Kincaid village	1,505	1,349	-156	-10.4%
Kinderhook village	216	189	-27	-12.5%
Kings CDP	x	146	N/A	N/A
Kingston CDP	x	20	N/A	N/A

Municipality/CDP	2010 Census Total Population	2020 Census Total Population	2010-2020 Change	2010-2020 % Change
Kingston Mines village	302	266	-36	-11.9%
Kingston village	1,164	1,108	-56	-4.8%
Kinmundy city	796	733	-63	-7.9%
Kinsman village	99	90	-9	-9.1%
Kirkland village	1,744	1,650	-94	-5.4%
Kirkwood village	714	678	-36	-5.0%
Knollwood CDP	1,747	2,121	374	21.4%
Knoxville city	2,911	2,901	-10	-0.3%
La Clede CDP	x	113	N/A	N/A
La Fayette village	223	160	-63	-28.3%
La Grange Park village	13,579	13,475	-104	-0.8%
La Grange village	15,550	16,321	771	5.0%
La Harpe city	1,235	1,175	-60	-4.9%
La Moille village	726	679	-47	-6.5%
La Prairie village	47	42	-5	-10.6%
La Rose village	144	98	-46	-31.9%
Lacon city	1,937	1,878	-59	-3.0%
Ladd village	1,295	1,263	-32	-2.5%
Lake Barrington village	4,973	5,100	127	2.6%
Lake Bluff village	5,722	5,616	-106	-1.9%
Lake Camelot CDP	1,686	1,798	112	6.6%
Lake Carroll CDP	x	852	N/A	N/A
Lake Catherine CDP	1,379	1,279	-100	-7.3%
Lake City CDP	x	69	N/A	N/A
Lake Forest city	19,375	19,367	-8	0.0%
Lake Holiday CDP	4,761	5,687	926	19.4%
Lake in the Hills village	28,965	28,982	17	0.1%
Lake Ka-Ho village	237	194	-43	-18.1%
Lake of the Woods CDP	2,912	2,403	-509	-17.5%
Lake Petersburg CDP	719	740	21	2.9%
Lake Summerset CDP	2,048	2,342	294	14.4%
Lake Villa village	8,741	8,741	0	0.0%
Lake Zurich village	19,631	19,759	128	0.7%
Lakemoor village	6,017	6,182	165	2.7%
Lakewood CDP	x	91	N/A	N/A
Lakewood Shores CDP	1,347	665	-682	-50.6%
Lakewood village	3,811	4,283	472	12.4%
Lanark city	1,457	1,504	47	3.2%
Lane CDP	x	95	N/A	N/A
Langleyville CDP	432	391	-41	-9.5%
Lansing village	28,331	29,076	745	2.6%
LaPlace CDP	259	239	-20	-7.7%
LaSalle city	9,609	9,582	-27	-0.3%
Latham village	380	333	-47	-12.4%
Lawrence CDP	x	220	N/A	N/A
Lawrenceville city	4,348	4,164	-184	-4.2%
Le Roy city	3,560	3,512	-48	-1.3%
Leaf River village	443	432	-11	-2.5%
Lebanon city	4,418	4,691	273	6.2%

Municipality/CDP	2010 Census Total Population	2020 Census Total Population	2010-2020 Change	2010-2020 % Change
Lee Center CDP	x	146	N/A	N/A
Lee village	337	313	-24	-7.1%
Leland Grove city	1,503	1,454	-49	-3.3%
Leland village	977	951	-26	-2.7%
Lemont village	16,000	17,629	1,629	10.2%
Lena village	2,912	2,772	-140	-4.8%
Lenzburg village	521	468	-53	-10.2%
Leonore village	130	121	-9	-6.9%
Lerna village	286	226	-60	-21.0%
Lewistown city	2,384	2,041	-343	-14.4%
Lexington city	2,060	2,090	30	1.5%
Liberty village	516	543	27	5.2%
Libertyville village	20,315	20,579	264	1.3%
Lily Lake village	993	1,032	39	3.9%
Lima village	163	148	-15	-9.2%
Limestone village	1,598	1,558	-40	-2.5%
Lincoln city	14,504	13,288	-1,216	-8.4%
Lincolnshire village	7,275	7,940	665	9.1%
Lincolnwood village	12,590	13,463	873	6.9%
Lindhurst village	14,462	14,406	-56	-0.4%
Lisbon village	285	271	-14	-4.9%
Lisle village	22,390	24,223	1,833	8.2%
Litchfield city	6,939	6,605	-334	-4.8%
Literberry CDP	x	71	N/A	N/A
Little York village	331	283	-48	-14.5%
Littleton village	181	139	-42	-23.2%
Liverpool village	129	94	-35	-27.1%
Livingston village	858	763	-95	-11.1%
Loami village	745	812	67	9.0%
Lockport city	24,839	26,094	1,255	5.1%
Lockport Heights CDP	x	749	N/A	N/A
Loda village	407	356	-51	-12.5%
Lomax village	454	404	-50	-11.0%
Lombard village	43,165	44,476	1,311	3.0%
London Mills village	392	350	-42	-10.7%
Long Creek village	1,328	1,261	-67	-5.0%
Long Grove village	8,043	8,366	323	4.0%
Long Lake CDP	3,515	3,663	148	4.2%
Long Point village	226	204	-22	-9.7%
Longview village	153	112	-41	-26.8%
Lorraine village	313	300	-13	-4.2%
Lorenzo CDP	x	26	N/A	N/A
Lost Nation CDP	708	714	6	0.8%
Lostant village	498	423	-75	-15.1%
Louisville village	1,139	1,136	-3	-0.3%
Loves Park city	23,996	23,397	-599	-2.5%
Lovington village	1,130	1,069	-61	-5.4%
Lowpoint CDP	x	148	N/A	N/A
Ludlow village	371	308	-63	-17.0%

Municipality/CDP	2010 Census Total Population	2020 Census Total Population	2010-2020 Change	2010-2020 % Change
Lyndon village	648	537	-111	-17.1%
Lynn Center CDP	x	85	N/A	N/A
Lynnville village	117	96	-21	-17.9%
Lynwood village	9,007	9,116	109	1.2%
Lyons village	10,729	10,817	88	0.8%
Macedonia village	63	30	-33	-52.4%
Machesney Park village	23,499	22,950	-549	-2.3%
Mackinaw village	1,950	1,879	-71	-3.6%
Macomb city	19,288	15,051	-4,237	-22.0%
Macon city	1,138	1,177	39	3.4%
Madison city	3,891	3,171	-720	-18.5%
Maeystown village	157	150	-7	-4.5%
Magnolia village	260	256	-4	-1.5%
Mahomet village	7,258	9,434	2,176	30.0%
Makanda village	561	547	-14	-2.5%
Malden village	362	318	-44	-12.2%
Malta village	1,164	1,143	-21	-1.8%
Manchester village	292	265	-27	-9.2%
Manhattan village	7,051	9,385	2,334	33.1%
Manito village	1,642	1,552	-90	-5.5%
Manlius village	359	298	-61	-17.0%
Mansfield village	906	928	22	2.4%
Manteno village	9,204	9,210	6	0.1%
Maple Park village	1,310	1,433	123	9.4%
Mapleton village	270	261	-9	-3.3%
Maquon village	284	218	-66	-23.2%
Marcelline CDP	x	75	N/A	N/A
Marengo city	7,648	7,568	-80	-1.0%
Marietta village	112	101	-11	-9.8%
Marine village	960	912	-48	-5.0%
Marion city	17,193	16,855	-338	-2.0%
Marissa village	1,979	1,833	-146	-7.4%
Mark village	555	519	-36	-6.5%
Markham city	12,508	11,661	-847	-6.8%
Marley CDP	x	128	N/A	N/A
Maroa city	1,801	1,577	-224	-12.4%
Marquette Heights city	2,824	2,541	-283	-10.0%
Marseilles city	5,094	4,845	-249	-4.9%
Marshall city	3,933	3,947	14	0.4%
Martinsville city	1,167	1,118	-49	-4.2%
Martinton village	381	334	-47	-12.3%
Maryville village	7,487	8,221	734	9.8%
Mascoutah city	7,483	8,754	1,271	17.0%
Mason City city	2,343	2,077	-266	-11.4%
Mason town	345	323	-22	-6.4%
Matherville village	723	707	-16	-2.2%
Matteson village	19,009	19,073	64	0.3%
Mattoon city	18,555	16,870	-1,685	-9.1%
Maunie village	139	91	-48	-34.5%

Municipality/CDP	2010 Census Total Population	2020 Census Total Population	2010-2020 Change	2010-2020 % Change
Maywood village	24,090	23,512	-578	-2.4%
Mazon village	1,015	979	-36	-3.5%
McClure village	402	256	-146	-36.3%
McCook village	228	249	21	9.2%
McCullom Lake village	1,049	988	-61	-5.8%
McHenry city	26,992	27,135	143	0.5%
McLean village	830	743	-87	-10.5%
McLeansboro city	2,883	2,675	-208	-7.2%
McNabb village	285	275	-10	-3.5%
Mechanicsburg village	590	662	72	12.2%
Media village	107	121	14	13.1%
Medora village	419	379	-40	-9.5%
Melrose Park village	25,411	24,796	-615	-2.4%
Melvin village	452	416	-36	-8.0%
Mendon village	953	872	-81	-8.5%
Mendota city	7,372	7,061	-311	-4.2%
Menominee village	248	211	-37	-14.9%
Meredosia village	1,044	826	-218	-20.9%
Merrionette Park village	1,900	1,969	69	3.6%
Merritt CDP	x	48	N/A	N/A
Metamora village	3,636	3,904	268	7.4%
Metcalf village	189	139	-50	-26.5%
Metropolis city	6,537	5,969	-568	-8.7%
Mettawa village	547	533	-14	-2.6%
Meyer CDP	x	18	N/A	N/A
Middletown village	324	329	5	1.5%
Midlothian village	14,819	14,325	-494	-3.3%
Milan village	5,099	5,097	-2	0.0%
Milford village	1,306	1,158	-148	-11.3%
Mill Creek village	65	59	-6	-9.2%
Mill Shoals village	215	176	-39	-18.1%
Millbrook village	335	277	-58	-17.3%
Milledgeville village	1,032	1,026	-6	-0.6%
Millersburg CDP	x	54	N/A	N/A
Millington village	665	617	-48	-7.2%
Millstadt village	4,011	4,071	60	1.5%
Milton village	271	214	-57	-21.0%
Mineral village	237	206	-31	-13.1%
Minier village	1,252	1,154	-98	-7.8%
Minonk city	2,078	1,928	-150	-7.2%
Minooka village	10,924	12,758	1,834	16.8%
Mitchell CDP	1,356	1,217	-139	-10.3%
Modesto village	189	182	-7	-3.7%
Mokena village	18,740	19,887	1,147	6.1%
Moline city	43,483	42,985	-498	-1.1%
Momence city	3,310	3,117	-193	-5.8%
Monee village	5,148	5,128	-20	-0.4%
Monmouth city	9,444	8,902	-542	-5.7%
Monroe Center village	471	411	-60	-12.7%

<u>Municipality/CDP</u>	2010 Census Total Population	2020 Census Total Population	2010-2020 Change	2010-2020 % Change
Montgomery village	18,438	20,262	1,824	9.9%
Monticello city	5,548	5,941	393	7.1%
Montrose village	201	210	9	4.5%
Moro CDP	x	397	N/A	N/A
Morris city	13,636	14,163	527	3.9%
Morrison city	4,188	4,085	-103	-2.5%
Morrisonville village	1,056	997	-59	-5.6%
Morton Grove village	23,270	25,297	2,027	8.7%
Morton village	16,267	17,117	850	5.2%
Mossville CDP	x	268	N/A	N/A
Mound City city	588	526	-62	-10.5%
Mound Station village	122	117	-5	-4.1%
Mounds city	810	661	-149	-18.4%
Mount Auburn village	480	452	-28	-5.8%
Mount Carmel city	7,284	7,015	-269	-3.7%
Mount Carroll city	1,717	1,479	-238	-13.9%
Mount Clare village	278	311	33	11.9%
Mount Erie village	88	98	10	11.4%
Mount Morris village	2,998	2,861	-137	-4.6%
Mount Olive city	2,099	2,015	-84	-4.0%
Mount Prospect village	54,167	56,852	2,685	5.0%
Mount Pulaski city	1,566	1,537	-29	-1.9%
Mount Sterling city	2,025	2,006	-19	-0.9%
Mount Vernon city	15,277	14,600	-677	-4.4%
Mount Zion village	5,833	6,019	186	3.2%
Moweaqua village	1,831	1,764	-67	-3.7%
Muddy village	68	61	-7	-10.3%
Mulberry Grove village	634	520	-114	-18.0%
Mulkeytown CDP	175	162	-13	-7.4%
Muncie village	146	157	11	7.5%
Mundelein village	31,064	31,560	496	1.6%
Murphysboro city	7,970	7,093	-877	-11.0%
Murrayville village	587	567	-20	-3.4%
Nachusa CDP	x	137	N/A	N/A
Naperville city	141,853	149,540	7,687	5.4%
Naplate village	496	412	-84	-16.9%
Naples town	130	100	-30	-23.1%
Nashville city	3,258	3,105	-153	-4.7%
Nason city	236	199	-37	-15.7%
Nauvoo city	1,149	950	-199	-17.3%
Nebo village	340	282	-58	-17.1%
Nekoma CDP	x	23	N/A	N/A
Nelson village	170	127	-43	-25.3%
Neoga city	1,636	1,398	-238	-14.5%
Neponset village	473	427	-46	-9.7%
New Athens village	2,054	1,955	-99	-4.8%
New Baden village	3,349	3,428	79	2.4%
New Bedford village	75	76	1	1.3%
New Berlin village	1,346	1,381	35	2.6%

Municipality/CDP	2010 Census Total Population	2020 Census Total Population	2010-2020 Change	2010-2020 % Change
New Boston city	683	613	-70	-10.2%
New Burnside village	211	153	-58	-27.5%
New Canton town	359	334	-25	-7.0%
New Douglas village	319	350	31	9.7%
New Grand Chain village	210	150	-60	-28.6%
New Haven village	433	399	-34	-7.9%
New Holland village	269	275	6	2.2%
New Lenox village	24,394	27,214	2,820	11.6%
New Milford village	697	794	97	13.9%
New Minden village	215	175	-40	-18.6%
New Salem village	137	121	-16	-11.7%
Newark village	992	973	-19	-1.9%
Newman city	865	778	-87	-10.1%
Newton city	2,849	2,777	-72	-2.5%
Niantic village	707	612	-95	-13.4%
Niles village	29,803	30,912	1,109	3.7%
Nilwood town	239	201	-38	-15.9%
Niota CDP	x	114	N/A	N/A
Noble village	677	633	-44	-6.5%
Nokomis city	2,256	2,142	-114	-5.1%
Nora village	121	107	-14	-11.6%
Normal town	52,497	52,736	239	0.5%
Norridge village	14,572	15,251	679	4.7%
Norris City village	1,275	1,145	-130	-10.2%
Norris village	213	173	-40	-18.8%
North Aurora village	16,760	18,261	1,501	9.0%
North Barrington village	3,047	3,171	124	4.1%
North Chicago city	32,574	30,759	-1,815	-5.6%
North City village	608	509	-99	-16.3%
North Henderson village	187	162	-25	-13.4%
North Pekin village	1,573	1,478	-95	-6.0%
North Riverside village	6,672	7,426	754	11.3%
North Utica village	1,352	1,323	-29	-2.1%
Northbrook village	33,170	35,222	2,052	6.2%
Northfield village	5,420	5,751	331	6.1%
Northlake city	12,323	12,840	517	4.2%
Norwood village	478	437	-41	-8.6%
Oak Brook village	7,883	8,163	280	3.6%
Oak Forest city	27,962	27,478	-484	-1.7%
Oak Grove village	396	476	80	20.2%
Oak Lawn village	56,690	58,362	1,672	2.9%
Oak Park village	51,878	54,583	2,705	5.2%
Oak Run CDP	547	721	174	31.8%
Oakbrook Terrace city	2,134	2,751	617	28.9%
Oakdale village	221	199	-22	-10.0%
Oakford village	286	234	-52	-18.2%
Oakland city	880	739	-141	-16.0%
Oakwood Hills village	2,083	2,076	-7	-0.3%
Oakwood village	1,595	1,325	-270	-16.9%

<u>Municipality/CDP</u>	2010 Census Total Population	2020 Census Total Population	2010-2020 Change	2010-2020 % Change
Oblong village	1,466	1,371	-95	-6.5%
Oconee village	180	141	-39	-21.7%
Odell village	1,046	1,003	-43	-4.1%
Odin village	1,076	935	-141	-13.1%
O'Fallon city	28,281	32,289	4,008	14.2%
Ogden village	810	729	-81	-10.0%
Oglesby city	3,791	3,712	-79	-2.1%
Ohio village	513	465	-48	-9.4%
Ohlman village	135	109	-26	-19.3%
Okawville village	1,434	1,369	-65	-4.5%
Old Mill Creek village	178	162	-16	-9.0%
Old Ripley village	108	82	-26	-24.1%
Old Shawneetown village	193	113	-80	-41.5%
Olive Branch CDP	864	650	-214	-24.8%
Olivet CDP	428	336	-92	-21.5%
Olmsted village	333	285	-48	-14.4%
Olney city	9,115	8,701	-414	-4.5%
Olympia Fields village	4,988	4,718	-270	-5.4%
Omaha village	266	209	-57	-21.4%
Onarga village	1,368	1,333	-35	-2.6%
Oneida city	700	696	-4	-0.6%
Opdyke CDP	254	236	-18	-7.1%
Ophiem CDP	x	123	N/A	N/A
Oquawka village	1,371	1,134	-237	-17.3%
Orangeville village	793	766	-27	-3.4%
Oreana village	875	891	16	1.8%
Oregon city	3,721	3,604	-117	-3.1%
Orient city	358	327	-31	-8.7%
Orion village	1,861	1,754	-107	-5.7%
Orland Hills village	7,149	6,893	-256	-3.6%
Orland Park village	56,767	58,703	1,936	3.4%
Osco CDP	x	108	N/A	N/A
Oswego village	30,355	34,585	4,230	13.9%
Ottawa city	18,768	18,840	72	0.4%
Otterville town	126	87	-39	-31.0%
Owaneco village	239	209	-30	-12.6%
Oxville CDP	x	24	N/A	N/A
Paderborn CDP	43	35	-8	-18.6%
Palatine village	68,557	67,908	-649	-0.9%
Palestine village	1,369	1,233	-136	-9.9%
Palmer village	229	216	-13	-5.7%
Palmyra village	698	605	-93	-13.3%
Paloma CDP	x	114	N/A	N/A
Palos Heights city	12,515	12,068	-447	-3.6%
Palos Hills city	17,484	18,530	1,046	6.0%
Palos Park village	4,847	4,899	52	1.1%
Pana city	5,847	5,199	-648	-11.1%
Panama village	343	337	-6	-1.7%
Panola village	45	47	2	4.4%

<u>Municipality/CDP</u>	2010 Census Total Population	2020 Census Total Population	2010-2020 Change	2010-2020 % Change
Papineau village	171	133	-38	-22.2%
Paris city	8,837	8,291	-546	-6.2%
Park City city	7,570	7,885	315	4.2%
Park Forest village	21,975	21,687	-288	-1.3%
Park Ridge city	37,480	39,656	2,176	5.8%
Parkersburg village	199	186	-13	-6.5%
Patoka village	584	525	-59	-10.1%
Paw Paw village	870	830	-40	-4.6%
Pawnee village	2,739	2,678	-61	-2.2%
Paxton city	4,473	4,450	-23	-0.5%
Payson village	1,026	1,025	-1	-0.1%
Pearl City village	838	790	-48	-5.7%
Pearl village	138	103	-35	-25.4%
Pecatonica village	2,195	2,090	-105	-4.8%
Pekin city	34,094	31,731	-2,363	-6.9%
Penfield CDP	193	151	-42	-21.8%
Peoria city	115,007	113,150	-1,857	-1.6%
Peoria Heights village	6,156	5,908	-248	-4.0%
Peotone village	4,142	4,150	8	0.2%
Percy village	970	906	-64	-6.6%
Perry village	397	314	-83	-20.9%
Peru city	10,295	9,896	-399	-3.9%
Pesotum village	551	550	-1	-0.2%
Petersburg city	2,260	2,258	-2	-0.1%
Phillipstown village	44	34	-10	-22.7%
Philo village	1,466	1,392	-74	-5.0%
Phoenix village	1,964	1,708	-256	-13.0%
Pierron village	600	459	-141	-23.5%
Pinckneyville city	5,648	5,066	-582	-10.3%
Pingree Grove village	4,532	10,365	5,833	128.7%
Piper City village	826	745	-81	-9.8%
Pistakee Highlands CDP	3,454	3,237	-217	-6.3%
Pittsburg village	572	565	-7	-1.2%
Pittsfield city	4,576	4,206	-370	-8.1%
Plainfield village	39,581	44,762	5,181	13.1%
Plainville village	264	271	7	2.7%
Plano city	10,856	11,847	991	9.1%
Plattville village	242	220	-22	-9.1%
Pleasant Hill village	966	924	-42	-4.3%
Pleasant Plains village	802	808	6	0.7%
Plum Valley CDP	x	632	N/A	N/A
Plymouth village	505	436	-69	-13.7%
Pocahontas village	784	697	-87	-11.1%
Polo city	2,355	2,291	-64	-2.7%
Pontiac city	11,931	11,150	-781	-6.5%
Pontoon Beach village	5,836	5,876	40	0.7%
Pontoosuc village	146	99	-47	-32.2%
Poplar Grove village	5,023	5,049	26	0.5%
Port Barrington village	1,517	1,584	67	4.4%

Municipality/CDP	2010 Census Total Population	2020 Census Total Population	2010-2020 Change	2010-2020 % Change
Port Byron village	1,647	1,668	21	1.3%
Posen village	5,987	5,632	-355	-5.9%
Potomac village	750	689	-61	-8.1%
Prairie City village	379	407	28	7.4%
Prairie du Rocher village	604	502	-102	-16.9%
Prairie Grove village	1,904	1,963	59	3.1%
Prairietown CDP	x	153	N/A	N/A
Preemption CDP	x	254	N/A	N/A
Prestbury CDP	1,722	1,657	-65	-3.8%
Preston Heights CDP	2,575	2,898	323	12.5%
Princeton city	7,660	7,832	172	2.2%
Princeville village	1,738	1,636	-102	-5.9%
Prophetstown city	2,080	1,946	-134	-6.4%
Prospect Heights city	16,256	16,058	-198	-1.2%
Pulaski village	206	154	-52	-25.2%
Quincy city	40,633	39,463	-1,170	-2.9%
Radom village	220	183	-37	-16.8%
Raleigh village	350	284	-66	-18.9%
Ramsey village	1,037	911	-126	-12.2%
Rankin village	561	495	-66	-11.8%
Ransom village	384	308	-76	-19.8%
Rantoul village	12,941	12,371	-570	-4.4%
Rapids City village	959	964	5	0.5%
Raritan village	138	102	-36	-26.1%
Raymond village	1,006	949	-57	-5.7%
Red Bud city	3,698	3,804	106	2.9%
Reddick village	163	199	36	22.1%
Redmon village	173	137	-36	-20.8%
Rentchler CDP	34	45	11	32.4%
Rest Haven CDP	x	502	N/A	N/A
Reynolds village	539	498	-41	-7.6%
Richfield CDP	x	26	N/A	N/A
Richmond village	1,874	2,089	215	11.5%
Richton Park village	13,646	12,775	-871	-6.4%
Richview village	253	238	-15	-5.9%
Ridge Farm village	882	787	-95	-10.8%
Ridgefield CDP	x	210	N/A	N/A
Ridgewood CDP	x	2,956	N/A	N/A
Ridgway village	869	851	-18	-2.1%
Ridott village	164	124	-40	-24.4%
Riggston CDP	x	14	N/A	N/A
Riley CDP	x	10	N/A	N/A
Ringwood village	836	844	8	1.0%
Rio village	220	209	-11	-5.0%
Ripley village	86	53	-33	-38.4%
Ritchie CDP	x	190	N/A	N/A
River Forest village	11,172	11,717	545	4.9%
River Grove village	10,227	10,612	385	3.8%
Riverdale village	13,549	10,663	-2,886	-21.3%

Municipality/CDP	2010 Census Total Population	2020 Census Total Population	2010-2020 Change	2010-2020 % Change
Riverside village	8,875	9,298	423	4.8%
Riverton village	3,455	3,532	77	2.2%
Riverwoods village	3,660	3,790	130	3.6%
Roanoke village	2,065	1,960	-105	-5.1%
Robbins village	5,337	4,629	-708	-13.3%
Roberts village	362	345	-17	-4.7%
Robinson city	7,713	7,150	-563	-7.3%
Rochelle city	9,574	9,446	-128	-1.3%
Rochester village	3,689	3,863	174	4.7%
Rock City village	315	293	-22	-7.0%
Rock Falls city	9,266	8,789	-477	-5.1%
Rock Island Arsenal CDP	149	182	33	22.1%
Rock Island city	39,018	37,108	-1,910	-4.9%
Rockbridge village	169	175	6	3.6%
Rockdale village	1,976	2,012	36	1.8%
Rockford city	152,871	148,655	-4,216	-2.8%
Rockport CDP	x	67	N/A	N/A
Rockton village	7,685	7,863	178	2.3%
Rockwood village	42	32	-10	-23.8%
Rolling Meadows city	24,099	24,200	101	0.4%
Rome CDP	1,738	1,604	-134	-7.7%
Romeoville village	39,680	39,863	183	0.5%
Roodhouse city	1,814	1,578	-236	-13.0%
Roscoe village	10,785	10,983	198	1.8%
Rose Hill village	80	89	9	11.3%
Roselle village	22,763	22,897	134	0.6%
Rosemont village	4,202	3,952	-250	-5.9%
Roseville village	989	892	-97	-9.8%
Rosewood Heights CDP	4,038	3,971	-67	-1.7%
Rosiclare city	1,160	980	-180	-15.5%
Rossville village	1,331	1,221	-110	-8.3%
Round Lake Beach village	28,175	27,252	-923	-3.3%
Round Lake Heights village	2,676	2,622	-54	-2.0%
Round Lake Park village	7,505	7,680	175	2.3%
Round Lake village	18,289	18,721	432	2.4%
Roxana village	1,542	1,454	-88	-5.7%
Royal Lakes village	197	167	-30	-15.2%
Royal village	293	293	0	0.0%
Royalton village	1,151	1,068	-83	-7.2%
Ruma village	317	313	-4	-1.3%
Rushville city	3,192	3,005	-187	-5.9%
Russellville village	94	98	4	4.3%
Rutland village	318	259	-59	-18.6%
Sadorus village	416	402	-14	-3.4%
Sailor Springs village	95	89	-6	-6.3%
Salem city	7,485	7,282	-203	-2.7%
Sammons Point village	279	214	-65	-23.3%
San Jose village	642	479	-163	-25.4%
Sandoval village	1,274	1,157	-117	-9.2%

<u>Municipality/CDP</u>	2010 Census Total Population	2020 Census Total Population	2010-2020 Change	2010-2020 % Change
Sandwich city	7,421	7,221	-200	-2.7%
Sauget village	159	141	-18	-11.3%
Sauk Village village	10,506	9,921	-585	-5.6%
Saunemin village	420	406	-14	-3.3%
Savanna city	3,062	2,783	-279	-9.1%
Savoy village	7,280	8,857	1,577	21.7%
Sawyer village	279	268	-11	-3.9%
Saybrook village	693	654	-39	-5.6%
Scales Mound village	376	436	60	16.0%
Schaumburg village	74,227	78,723	4,496	6.1%
Schiller Park village	11,793	11,709	-84	-0.7%
Schram City village	586	563	-23	-3.9%
Sciota village	61	38	-23	-37.7%
Scott AFB CDP	3,612	3,688	76	2.1%
Scottville village	116	93	-23	-19.8%
Seaton village	222	214	-8	-3.6%
Seatonville village	314	321	7	2.2%
Secor village	373	342	-31	-8.3%
Seneca village	2,371	2,353	-18	-0.8%
Serena CDP	x	129	N/A	N/A
Sesser city	1,931	1,888	-43	-2.2%
Seymour CDP	303	317	14	4.6%
Shabbona village	925	863	-62	-6.7%
Shannon village	757	801	44	5.8%
Shawneetown city	1,239	1,054	-185	-14.9%
Sheffield village	926	821	-105	-11.3%
Shelbyville city	4,700	4,674	-26	-0.6%
Sheldon village	1,070	965	-105	-9.8%
Sheridan village	2,137	2,431	294	13.8%
Sherman village	4,148	4,673	525	12.7%
Sherrard village	640	692	52	8.1%
Shiloh village	12,651	14,098	1,447	11.4%
Shipman town	624	511	-113	-18.1%
Shirley CDP	x	135	N/A	N/A
Shorewood village	15,615	18,186	2,571	16.5%
Shumway village	202	188	-14	-6.9%
Sibley village	272	288	16	5.9%
Sidell village	617	489	-128	-20.7%
Sidney village	1,233	1,208	-25	-2.0%
Sigel town	373	329	-44	-11.8%
Silvis city	7,479	8,003	524	7.0%
Simpson village	60	44	-16	-26.7%
Sims village	252	166	-86	-34.1%
Skokie village	64,784	67,824	3,040	4.7%
Sleepy Hollow village	3,304	3,214	-90	-2.7%
Smithboro village	177	154	-23	-13.0%
Smithfield village	230	191	-39	-17.0%
Smithton village	3,693	4,006	313	8.5%
Smithville CDP	x	157	N/A	N/A

Municipality/CDP	2010 Census Total Population	2020 Census Total Population	2010-2020 Change	2010-2020 % Change
Solon Mills CDP	x	133	N/A	N/A
Somonauk village	1,893	1,786	-107	-5.7%
Sorento village	498	429	-69	-13.9%
South Barrington village	4,565	5,077	512	11.2%
South Beloit city	7,892	7,989	97	1.2%
South Chicago Heights village	4,139	4,026	-113	-2.7%
South Elgin village	21,985	23,865	1,880	8.6%
South Holland village	22,030	21,465	-565	-2.6%
South Jacksonville village	3,331	3,302	-29	-0.9%
South Pekin village	1,146	996	-150	-13.1%
South Roxana village	2,053	1,891	-162	-7.9%
South Wilmington village	681	710	29	4.3%
Southern View village	1,642	1,596	-46	-2.8%
Sparland village	406	366	-40	-9.9%
Sparta city	4,302	4,095	-207	-4.8%
Spaulding village	873	801	-72	-8.2%
Spillertown village	203	181	-22	-10.8%
Spring Bay village	452	474	22	4.9%
Spring Grove village	5,778	5,487	-291	-5.0%
Spring Valley city	5,558	5,582	24	0.4%
Springerton village	110	101	-9	-8.2%
Springfield city	116,250	114,394	-1,856	-1.6%
St. Anne village	1,257	1,161	-96	-7.6%
St. Augustine village	120	119	-1	-0.8%
St. Charles city	32,974	33,081	107	0.3%
St. David village	589	522	-67	-11.4%
St. Elmo city	1,426	1,254	-172	-12.1%
St. Francisville city	697	568	-129	-18.5%
St. Jacob village	1,098	1,358	260	23.7%
St. Johns village	219	163	-56	-25.6%
St. Joseph village	3,967	3,810	-157	-4.0%
St. Libory village	615	628	13	2.1%
St. Peter village	359	322	-37	-10.3%
St. Rose village	x	459	N/A	N/A
Standard City village	152	135	-17	-11.2%
Standard village	220	225	5	2.3%
Stanford village	596	600	4	0.7%
Staunton city	5,139	5,054	-85	-1.7%
Ste. Marie village	244	238	-6	-2.5%
Steeleville village	2,083	1,930	-153	-7.3%
Steger village	9,570	9,584	14	0.1%
Sterling city	15,370	14,764	-606	-3.9%
Steward village	256	229	-27	-10.5%
Stewardson village	734	721	-13	-1.8%
Stickney village	6,786	7,110	324	4.8%
Stillman Valley village	1,120	1,075	-45	-4.0%
Stockton village	1,862	1,728	-134	-7.2%
Stone Park village	4,946	4,576	-370	-7.5%
Stonefort village	297	224	-73	-24.6%

Municipality/CDP	2010 Census Total Population	2020 Census Total Population	2010-2020 Change	2010-2020 % Change
Stonington village	932	837	-95	-10.2%
Stoy village	104	108	4	3.8%
Strasburg village	467	531	64	13.7%
Strawn village	100	101	1	1.0%
Streamwood village	39,858	39,577	-281	-0.7%
Streator city	13,710	12,500	-1,210	-8.8%
Stronghurst village	883	833	-50	-5.7%
Sublette village	449	380	-69	-15.4%
Sugar Grove village	8,997	9,278	281	3.1%
Sullivan city	4,440	4,413	-27	-0.6%
Summerfield village	451	347	-104	-23.1%
Summit village	11,054	11,161	107	1.0%
Sumner city	3,174	2,631	-543	-17.1%
Sun River Terrace village	528	455	-73	-13.8%
Sunnyland CDP	x	822	N/A	N/A
Swansea village	13,430	14,386	956	7.1%
Swedona CDP	x	109	N/A	N/A
Sycamore city	17,519	18,577	1,058	6.0%
Symerton village	87	128	41	47.1%
Table Grove village	416	353	-63	-15.1%
Tallula village	488	434	-54	-11.1%
Tamaroa village	638	544	-94	-14.7%
Tamms village	632	430	-202	-32.0%
Tampico village	790	689	-101	-12.8%
Taylor Ridge CDP	x	141	N/A	N/A
Taylor Springs village	690	724	34	4.9%
Taylorville city	11,246	10,506	-740	-6.6%
Tennessee village	115	101	-14	-12.2%
Teutopolis village	1,530	1,618	88	5.8%
Thawville village	241	215	-26	-10.8%
Thayer village	693	632	-61	-8.8%
The Galena Territory CDP	1,058	1,500	442	41.8%
Thebes village	436	208	-228	-52.3%
Third Lake village	1,182	1,111	-71	-6.0%
Thomasboro village	1,126	1,034	-92	-8.2%
Thompsonville village	543	486	-57	-10.5%
Thomson village	590	1,610	1,020	172.9%
Thornton village	2,338	2,386	48	2.1%
Tilden village	934	750	-184	-19.7%
Tilton village	2,724	2,660	-64	-2.3%
Timberlane village	934	906	-28	-3.0%
Time village	23	26	3	13.0%
Tinley Park village	56,703	55,971	-732	-1.3%
Tiskilwa village	829	740	-89	-10.7%
Toledo village	1,238	1,161	-77	-6.2%
Tolono village	3,447	3,604	157	4.6%
Toluca city	1,414	1,340	-74	-5.2%
Tonica village	768	749	-19	-2.5%
Topeka village	76	60	-16	-21.1%

<u>Municipality/CDP</u>	2010 Census Total Population	2020 Census Total Population	2010-2020 Change	2010-2020 % Change
Toulon city	1,292	1,193	-99	-7.7%
Tovey village	512	464	-48	-9.4%
Towanda village	480	431	-49	-10.2%
Tower Hill village	611	485	-126	-20.6%
Tower Lakes village	1,283	1,226	-57	-4.4%
Tremont village	2,236	2,277	41	1.8%
Trenton city	2,715	2,690	-25	-0.9%
Trilla CDP	x	156	N/A	N/A
Triumph CDP	x	100	N/A	N/A
Trivoli CDP	x	385	N/A	N/A
Trout Valley village	537	515	-22	-4.1%
Troy city	9,888	10,960	1,072	10.8%
Troy Grove village	250	225	-25	-10.0%
Tuscola city	4,480	4,636	156	3.5%
Twin Grove CDP	1,564	1,524	-40	-2.6%
Ullin village	463	466	3	0.6%
Union CDP	x	98	N/A	N/A
Union Hill village	58	55	-3	-5.2%
Union village	580	551	-29	-5.0%
University Park village	7,129	7,145	16	0.2%
Urbana city	41,250	38,336	-2,914	-7.1%
Ursa village	626	609	-17	-2.7%
Valier village	669	554	-115	-17.2%
Valley City village	13	14	1	7.7%
Valmeyer village	1,263	1,233	-30	-2.4%
Vandalia city	7,042	7,458	416	5.9%
Varna village	384	375	-9	-2.3%
Venedy village	138	121	-17	-12.3%
Venetian Village CDP	2,826	2,761	-65	-2.3%
Venice city	1,890	1,498	-392	-20.7%
Vergennes village	298	235	-63	-21.1%
Vermilion village	225	203	-22	-9.8%
Vermont village	667	570	-97	-14.5%
Vernon Hills village	25,113	26,850	1,737	6.9%
Vernon village	129	103	-26	-20.2%
Verona village	215	208	-7	-3.3%
Versailles village	478	446	-32	-6.7%
Victoria village	316	268	-48	-15.2%
Vienna city	1,434	1,343	-91	-6.3%
Villa Grove city	2,537	2,472	-65	-2.6%
Villa Park village	21,904	22,263	359	1.6%
Viola village	955	869	-86	-9.0%
Virden city	3,425	3,231	-194	-5.7%
Virgil village	329	289	-40	-12.2%
Virginia city	1,611	1,514	-97	-6.0%
Volo village	2,929	6,122	3,193	109.0%
Wadsworth village	3,815	3,517	-298	-7.8%
Waggoner village	266	181	-85	-32.0%
Walnut Hill village	108	95	-13	-12.0%

<u>Municipality/CDP</u>	2010 Census Total Population	2020 Census Total Population	2010-2020 Change	2010-2020 % Change
Walnut village	1,416	1,311	-105	-7.4%
Walshville village	64	61	-3	-4.7%
Waltonville village	434	408	-26	-6.0%
Wamac city	1,185	985	-200	-16.9%
Wapella village	558	513	-45	-8.1%
Warren village	1,428	1,323	-105	-7.4%
Warrensburg village	1,210	1,110	-100	-8.3%
Warrenville city	13,140	13,553	413	3.1%
Warsaw city	1,607	1,510	-97	-6.0%
Washburn village	1,155	1,032	-123	-10.6%
Washington city	15,134	16,071	937	6.2%
Washington Park village	4,196	2,592	-1,604	-38.2%
Wataga village	843	744	-99	-11.7%
Waterloo city	9,811	11,013	1,202	12.3%
Waterman village	1,506	1,433	-73	-4.8%
Watseka city	5,255	4,679	-576	-11.0%
Watson village	754	668	-86	-11.4%
Wauconda village	13,603	14,084	481	3.5%
Waukegan city	89,078	89,321	243	0.3%
Waverly city	1,307	1,194	-113	-8.6%
Wayne City village	1,032	994	-38	-3.7%
Wayne village	2,431	2,286	-145	-6.0%
Waynesville village	434	381	-53	-12.2%
Wedron CDP	x	140	N/A	N/A
Weldon village	429	369	-60	-14.0%
Wellington village	242	206	-36	-14.9%
Wenona city	1,056	974	-82	-7.8%
Wenonah village	37	32	-5	-13.5%
West Brooklyn village	142	131	-11	-7.7%
West Chicago city	27,086	25,614	-1,472	-5.4%
West City village	661	656	-5	-0.8%
West Dundee village	7,331	7,686	355	4.8%
West Frankfort city	8,182	7,275	-907	-11.1%
West Liberty CDP	x	96	N/A	N/A
West Peoria city	4,458	4,263	-195	-4.4%
West Point village	178	140	-38	-21.3%
West Salem village	897	786	-111	-12.4%
West Union CDP	288	271	-17	-5.9%
West York CDP	129	74	-55	-42.6%
Westchester village	16,718	16,892	174	1.0%
Western Springs village	12,975	13,629	654	5.0%
Westervelt CDP	128	131	3	2.3%
Westfield village	601	536	-65	-10.8%
Westlake Village CDP	x	1,493	N/A	N/A
Westmont village	24,685	24,429	-256	-1.0%
Westville village	3,202	3,167	-35	-1.1%
Wheaton city	52,894	53,970	1,076	2.0%
Wheeler village	147	96	-51	-34.7%
Wheeling village	37,648	39,137	1,489	4.0%

Municipality/CDP	2010 Census Total Population	2020 Census Total Population	2010-2020 Change	2010-2020 % Change
White City village	232	212	-20	-8.6%
White Hall city	2,520	2,295	-225	-8.9%
White Heath CDP	290	251	-39	-13.4%
Whiteash CDP	241	279	38	15.8%
Williamsfield village	578	575	-3	-0.5%
Williamson village	230	183	-47	-20.4%
Williamsville village	1,476	1,425	-51	-3.5%
Willisville village	633	579	-54	-8.5%
Willow Hill village	230	172	-58	-25.2%
Willow Lake CDP	x	1,026	N/A	N/A
Willow Springs village	5,524	5,857	333	6.0%
Willowbrook CDP	2,076	1,346	-730	-35.2%
Willowbrook village	8,540	9,236	696	8.1%
Wilmette village	27,087	28,170	1,083	4.0%
Wilmington city	5,724	5,664	-60	-1.0%
Wilmington village	142	91	-51	-35.9%
Wilsonville village	586	536	-50	-8.5%
Wilton Center CDP	x	122	N/A	N/A
Winchester city	1,593	1,574	-19	-1.2%
Windsor city	1,187	1,079	-108	-9.1%
Windsor village	748	668	-80	-10.7%
Winfield village	9,080	9,835	755	8.3%
Winnebago village	3,101	2,940	-161	-5.2%
Winnetka village	12,187	12,744	557	4.6%
Winslow village	338	281	-57	-16.9%
Winthrop Harbor village	6,742	6,705	-37	-0.5%
Witt city	903	785	-118	-13.1%
Wonder Lake village	4,026	3,973	-53	-1.3%
Wood Dale city	13,770	14,012	242	1.8%
Wood River city	10,657	10,464	-193	-1.8%
Woodhull village	811	754	-57	-7.0%
Woodland village	324	248	-76	-23.5%
Woodlawn village	698	617	-81	-11.6%
Woodridge village	32,971	34,158	1,187	3.6%
Woodson village	512	498	-14	-2.7%
Woodstock city	24,770	25,630	860	3.5%
Worden village	1,044	1,096	52	5.0%
Worth village	10,789	10,970	181	1.7%
Wyandot village	991	886	-105	-10.6%
Wyoming city	1,429	1,300	-129	-9.0%
Xenia village	391	380	-11	-2.8%
Yale village	86	67	-19	-22.1%
Yates City village	693	642	-51	-7.4%
Yorkville city	16,921	21,533	4,612	27.3%
Zeigler city	1,801	1,484	-317	-17.6%
Zion city	24,413	24,655	242	1.0%

COMMISSION OVERVIEW

The Commission on Government Forecasting & Accountability is a bipartisan legislative support service agency responsible for advising the Illinois General Assembly on economic and fiscal policy issues and for providing objective policy research for legislators and legislative staff. The Commission's board is comprised of twelve legislators—split evenly between the House and Senate and between Democrats and Republicans. Effective December 10, 2018, pursuant to P.A. 100-1148 the former Legislative Research Unit was merged into the Commission.

The Commission has three internal units—Revenue, Pensions, and Research, each of which has a staff of analysts and researchers who analyze policy proposals, legislation, state revenues & expenditures, and benefit programs, and who provide research services to members and staff of the General Assembly. The Commission's staff fulfills the statutory obligations set forth in the Commission on Government Forecasting and Accountability Act (25 ILCS 155/), the State Debt Impact Note Act (25 ILCS 65/), the Illinois Pension Code (40 ILCS 5/), the Pension Impact Note Act (25 ILCS 55/), the State Facilities Closure Act (30 ILCS 608/), the State Employees Group Insurance Act of 1971 (5 ILCS 375/), the Public Safety Employee Benefits Act (820 ILCS 320/), the Legislative Commission Reorganization Act of 1984 (25 ILCS 130/), and the Reports to the Commission on Government Forecasting and Accountability Act (25 ILCS 110/).

- The **Revenue Unit** issues an annual revenue estimate, reports monthly on the state's financial and economic condition, and prepares bill analyses and debt impact notes on proposed legislation having a financial impact on the State. The Unit publishes a number of statutorily mandated reports, as well as on-demand reports, including the *Monthly Briefing* newsletter and annually, the *Budget Summary*, *Capital Plan Analysis*, *Illinois Economic Forecast Report*, *Wagering in Illinois Update*, and *Liabilities of the State Employees' Group Insurance Program*, among others. The Unit's staff also fulfills the agency's obligations set forth in the State Facilities Closure Act.
- The **Pension Unit** prepares pension impact notes on proposed pension legislation and publishes several statutorily mandated reports including the *Financial Condition of the Illinois State Retirement Systems*, the *Financial Condition of Illinois Public Pension Systems* and the *Fiscal Analysis of the Downstate Police & Fire Pension Funds in Illinois*. The Unit's staff also fulfills the statutory responsibilities set forth in the Public Safety Employee Benefits Act.
- The **Research Unit** primarily performs research and provides information as may be requested by members of the General Assembly or legislative staffs. Additionally, the Unit maintains a research library and, per statute, collects information concerning state government and the general welfare of the state, examines the effects of constitutional provisions and previously enacted statutes, and considers public policy issues and questions of state-wide interest. Additionally, the Unit publishes *First Reading*, a quarterly newsletter which includes abstracts of annual reports or special studies from other state agencies, the *Illinois Tax Handbook for Legislators*, *Federal Funds to State Agencies*, various reports detailing appointments to State Boards and Commissions, the *1970 Illinois Constitution Annotated for Legislators*, the *Roster of Illinois Legislators*, and numerous special topic publications.

Commission on Government Forecasting & Accountability

802 Stratton Office Building
Springfield, Illinois 62706
Phone: 217.782.5322
Fax: 217.782.3513
<http://cgfa.ilga.gov>